



**FOOTBALL
SOUTH
AUSTRALIA**



**NATIONAL
PREMIER LEAGUES**

FOOTBALL SA COMPETITION REGULATIONS

**Senior Men's Competitions
Senior Women's Competitions
Community Women's
Youth Competitions
MiniRoos
Cup Competitions**

As of January 2025

Football SA Competition Regulations

Table of Contents

1. GENERAL	7
1.1. Application.....	7
1.2. Scope	7
1.3. Registers Prima Facie Evidence	7
2. DEFINITIONS	8
3. MINIMUM VENUE REQUIREMENTS	15
3.1. Overview	15
3.2. Youth Requirements	15
3.3. Medical Requirements.....	15
3.4. Use of Club Venues.....	15
3.5. Ground Registrations.....	15
3.6. Ground Facilities and Club Signage	16
3.7. Facilities and Ground Arrangements	16
3.8. Field Markings.....	16
3.9. Installation of Goals.....	17
3.10. Change of Venue	17
3.11. Control of Competitions.....	17
4. COMPETITION OPERATIONS	18
4.1. Competitions.....	18
4.2. Admission to Competitions	18
4.3. Admission Charges and Season Passes	18
4.4. Nomination Form	19
4.5. Player/Club Relations	19
4.6. Financial Obligations	19
4.7. Insurance	19
4.8. Matches and Duration of Matches	20
4.9. Match Forfeits and Cancellations	21
4.10. Abandoned Matches and Walk-offs	21
4.11. Disturbances	22
4.12. Inability to Field Teams and Postponed Matches	22
4.13. Withdrawal of Teams from Competition	23
4.14. Number of Players Required	23
4.15. Youth Team Nomination Requirements	24
4.16. Youth League Formation.....	24
4.17. Promotion and Relegation	25
4.18. Match Sheets and Match Reports	25

4.19.	Match Balls	27
4.20.	Team Names	27
4.21.	Club Colours and Playing Strip.....	27
4.22.	Unauthorised Matches and Tours	28
4.23.	League Points	29
4.24.	Youth Club Championship Table.....	29
4.25.	Goal difference.....	29
4.26.	Players Injury and Concussion Guidelines	30
4.27.	Casual Vacancies in Competitions	30
4.28.	Annual returns	30
4.29.	Prize Money	30
5.	<i>ELIGIBILITY</i>	31
5.1.	Status of Players.....	31
5.2.	Registration of Players.....	31
5.3.	Registration Procedure	32
5.4.	Registration of A-League Women and Football SA Academy Players	32
5.5.	Register of Clubs.....	32
5.6.	Eligibility of Players	32
5.7.	Youth Eligibility of Players	33
5.8.	Biological Maturation Testing	34
5.9.	Relative Age Effect	34
5.10.	Visa Players	35
5.11.	Substitution and Interchange of Players	35
5.12.	Guest Players	36
5.13.	Player Rosters	37
5.14.	Player Remuneration.....	37
5.15.	Adelaide United Youth Team	38
5.16.	National and State Representative Teams	38
5.17.	Football SA Academy	39
5.18.	Movement of Players	39
5.19.	School Football.....	40
5.20.	Unregistered, Ineligible and Suspended Players.....	41
5.21.	Ring-Ins.....	41
6.	<i>OFFICIALS AND REPORTING</i>	42
6.1.	Match Officials	42
6.2.	Non-Attendance of a Match Official	42
6.3.	Coaches.....	43
6.4.	Online Team Squads	44
6.5.	Notification of Results	44
6.6.	Match Results	44

6.7.	Ground Stewards.....	45
6.8.	Registration of Team Officials	46
6.9.	Change in Registered information	46
6.10.	Registration of Match Officials	46
6.11.	Club Official meeting attendance	46
6.12.	Reports of Contravention of Rules and Regulations	46
6.13.	Action on reports	47
7.	<i>MEN'S AND WOMEN'S FINAL SERIES</i>	48
7.1.	The Competition.....	48
7.2.	Host Club Responsibilities	48
7.3.	Kick Off Times and Match Duration	48
7.4.	Eligibility of Players	48
7.5.	Substitution and Interchange of Players	49
7.6.	Eligibility for National Second Tier Competition.....	49
8.	<i>YOUTH CLUB CHAMPIONSHIP FINALS</i>	51
8.1.	The Competition.....	51
8.2.	Player Eligibility.....	51
8.3.	Match Duration and Procedures to Determine the Winner of a Match	51
9.	<i>MEN'S CUP COMPETITION</i>	52
9.1.	General	52
9.2.	Team Entry.....	52
9.3.	Draw	52
9.4.	Kick off Times and Duration of Matches	52
9.5.	Eligibility of Players	53
9.6.	Match Sheets	53
9.7.	Substitution and Interchange of Players	53
9.8.	Ground Stewards.....	54
9.9.	Host Venues	54
9.10.	Match Balls	54
9.11.	Match Officials	55
9.12.	Admission Charges	55
9.13.	Forfeits	55
9.14.	Semi-Finals and Finals.....	55
9.15.	Adelaide United FC	55
10.	<i>WOMEN'S CUP COMPETITION</i>	57
10.1.	Draw	57
10.2.	Kick Off Times and Duration.....	57
10.3.	Eligibility of Players	57
10.4.	Substitution and Interchange of Players	58
10.5.	Host Venues	58

10.6.	Match Officials	58
10.7.	Admission Charges	58
10.8.	Forfeits	59
10.9.	Semi-Finals and Finals.....	59
11.	<i>YOUTH CUP COMPETITION RULES</i>	60
11.1.	Player Eligibility.....	60
11.2.	Movement of Players	60
11.3.	Match Duration and Procedures to Determine the Winner of a Match	60
12.	<i>PENALTIES AND FINES</i>	61
12.1.	Summary of Fines	61
12.2.	Scale of Penalties.....	61
12.3.	Aiding, Abetting and Attempts.....	61
12.4.	Contravention by Clubs and their officers.....	62
12.5.	Offences.....	62
12.6.	Expulsion, Disqualification, and Suspension of Clubs and Affiliated Associations	62
12.7.	Bonds.....	63
13.	<i>APPENDIXES</i>	64
	APPENDIX A - FINES AND PENALTIES	64
	APPENDIX B – MEN’S NPL PLAYER POINTS SYSTEM 2025	69
	<i>Football Australia – National Premier Leagues</i>	69
1.	<i>PLAYER POINTS SYSTEM</i>	70
	Points Deductions: An NPL Club’s Points Total can be decreased in accordance with the following provisions:.....	72
2.	<i>GENERAL DEFINITIONS AND EXPLANATORY NOTES</i>	72
	First Team.....	73
	First Team means the NPL Club’s senior team participating in the NPL.	73
	First Team Player Roster	73
	Loan	73
	Loan Club	73
	Match Day Team Sheets.....	73
	NPL	73
	NPL Club Age-Eligible Teams.....	73
	NPL Club.....	74
	Parent Club.....	74
	PPS or Player Points System	74
	Points Cap	74
	Points Total	74
	Promoted Club.....	74
	State Premiers.....	74
	<i>Explanatory Notes</i>	75
	NPL Club First Team Player Roster Requirements	75

Youth Player	75
Australian Player	75
Visa Player.....	75
Homegrown Player	76
Loyalty Player	76
Switching Player	76
• In the event that a Player is a Switching Player, he can only be classified in one (1) category (e.g. a Player cannot incur Switching Player points in two (2) different categories).....	76
National Elite Pathway Loan Player	77
Pathway Player.....	77
Australian Marquee Player.....	78
Points Deduction – Youth Player Advancement.....	78
Points Deduction – First Team Player Loan.....	78
Points Deduction – First Team Player Advancement	78
Points Deduction – Promoted Club	78
APPENDIX C - WOMEN’S NATIONAL PREMIER LEAGUE PLAYER POINTS SYSTEM (PPS)	80
APPENDIX D - FIRST TEAM PLAYER ROSTER 2025	87
1. General Definitions.....	87
First Team Player Roster.....	87
2. Explanatory Notes	87
Visa Player.....	88
3. Exceptional Circumstances	89
APPENDIX E – MEN’S AND WOMEN’S FINAL SERIES COMPETITION	90
APPENDIX F – 2025 PRIZE MONEY	93
APPENDIX G – YCC BONUS/DEDUCTION POINTS	95
AAPPENDIX H – FOOTBALL SA CLUB REFEREE FEES 2025	98
APPENDIX I – EXTREME WEATHER POLICY	100

1. GENERAL

1.1. Application

- 1.1.1.** These Regulations specify the requirements and rules of the Competitions and are to be implemented in conjunction with the FIFA Statutes, Laws of the Game, FA Regulations and other Football SA Regulations including the Disciplinary and Judicial Bodies Regulations.
- 1.1.2.** In the event of inconsistency between these Regulations and any Football Australia Regulations or Football SA Regulations, the interpretation will prevail in the following order:
 - a. FA Statutes;
 - b. National Registration Regulations;
 - c. National Disciplinary Regulations;
 - d. any other FA Regulations;
 - e. Football SA Disciplinary and Judicial Bodies Regulations;
 - f. these Regulations; and
 - g. the Appendices.
- 1.1.3.** The Appendixes form part of these Regulations.

1.2. Scope

- 1.2.1.** Football SA is responsible for the governance of the Competitions and the enforcement and determination of the rules is at the discretion of Football SA.
- 1.2.2.** These Regulations apply to all Affiliated Associations, Clubs, Teams and Participants in the Competitions.
- 1.2.3.** Each Affiliated Association and Club shall be responsible for the actions of its Participants and will enforce these Regulations on its Participants.

1.3. Registers Prima Facie Evidence

- 1.3.1.** Entry on a register maintained by Football SA shall be prima facie evidence of the facts and matters contained therein.

2. DEFINITIONS

Abandoned means a Match which has failed to commence for any reason or did commence and prior to the Match concluding, was stopped by the Match Official for any reason in accordance with the Laws of the Game.

Affiliated Association means a registered member association of Football SA that is bound by Football SA Regulations and Football Australia Regulations and of which Clubs form a part of to participate in a Competition.

A-League Men Competition means the highest-level professional men's soccer league in Australia and New Zealand, currently known as the A-League Men and including any successor hereto.

A-League Women Competition means the highest-level professional women's soccer league in Australia and New Zealand, currently known as the A-League Women and including any successor hereto.

A-League Men's Player means a Player that is contracted to a Club in the A-League Men's prior to or as at the commencement of Season.

A-League Women's Player means a Player that is contracted to a Club in the A-League Women's prior to or as at the commencement of Season.

Amateur Competition means a Competition that does not have any registered Professional Players.

Amateur Player means any Player that is not a Professional in accordance with article 4.1. of the National Registration Regulations.

Australia Cup means the national club competition staged by, or under the control of, FA between A-League Clubs and Member Federation Clubs, currently known as the Hahn Australia Cup (or as otherwise notified by FA) comprising the Preliminary Rounds, the Final Rounds Playoffs and the Final Rounds.

Australian Player means any Player who is either a:

- a. citizen of Australia;
- b. Permanent Resident of Australia, where 'Permanent Resident' means a person residing in Australia on a "permanent" visa class issued by the Australian Government, evidenced by either the person's Visa Grant Notice or as a listed entitlement on the person's online Visa Entitlement Verification;
- c. person who has been granted indefinite stay in Australia on their visa; or
- d. holder of a refugee visa, humanitarian visa or protection visa issued by the Australian government.

Away Team means the Team or Club in a Match that is not the Home Team and / or where a Match is at a Neutral Venue, the Team that appears second on the Match list.

Board means the Board of Directors of Football SA appointed or elected from time to time pursuant to the Football SA Constitution.

Borrowed Player means a Player who is temporarily permitted to play for a Team other than their registered Team under these Regulations.

Club means an entity that is affiliated to Football South Australia, or affiliated or a member of an Affiliated Association, for the purposes of participating in a Competition and is bound by Football SA Regulations and Football Australia Regulations.

Club Official means any person that is appointed to an official role at a Club for administration, management or organisation of a Club (whether paid or unpaid), including Employees, Coaches, Contractors, Directors, Representatives and Volunteers.

Coach means a person with the required coaching qualifications that is appointed to coach a Team and is registered with Football SA.

Coaching Registration Program means an annual program of Football SA for coaching registration and accreditation that may be accessible to Coaches as invited by Football SA.

Community Competition means all Competitions excluding the Men's National Premier League (NPL), Women's National Premier League (WNPL), Men's State League 1 and 2, and Women's State League (WSL) Competitions.

Competitions means any football competition administered or conducted by Football SA in which Teams participate, including but not limited to, the National Premier League, State Leagues, Women's State League Competitions, Youth Competitions, Community Competitions, and MiniRoos Competitions.

Competition Administrator means person appointed by Football SA to administer a Competition.

Competition Department means the Football SA competitions Team.

Competition Management System means the Competition management system, known as Dribl, utilised by Football SA to administer Competitions.

Constitution means the Football SA Constitution as amended by Football SA from time to time.

Contractor means a person or entity who undertakes paid work to provide products or services.

Cup Competitions means the Competition conducted by Football SA, including (but not limited to) the Hahn Australia Cup Preliminary Rounds, Federation Cup, Youth Cups and the Men's and Women's Cup Competitions.

Cup Matches mean the Matches that form the Cup Competitions.

Director means a member of the Board.

FA Regulations means any rules, policies and regulations as promulgated or issued by Football Australia from time to time.

FA Statutes means any statute as promulgated, issued or amended by Football Australia from time to time.

Field of Play means the field area on which a Match is played that meets the Competition requirements.

FIFA means the Federation Internationale de Football Association, the governing body for football internationally.

FIFA Statutes means the statutes, regulations, policies and documents of FIFA as they apply to Football SA Competitions.

Final means the Match that will determine the winning Team of a Competition.

Final Series is the series of Matches that form part of a Competition leading to and including the Final following the Home and Away Season, as governed by the rules in Clause 7 and 8 of these Regulations.

First Team means the Senior Grade Team of all Senior Elite Competitions.

First Team Player Roster means the roster of Players for a First Team maintained in accordance with the First Team Player Roster system and any other Competition Regulations provided by Football SA.

Football Australia means Football Australia Limited ABN 28 106 478 068 which is the governing body for football in Australia.

Football SA means the Football Federation of South Australia Incorporated ABN 70 315 069 301 which is the governing body for football in the state of South Australia.

Football SA Academy Player means a Player with a full-time scholarship and/or registered with the Football SA Academy Program.

Football SA Academy Program means the Football SA training program for selected young Players to enter a pathway to professional football.

Football SA Child Safe Policy means the Football SA Policy for Safeguarding Children and Young People, as promulgated or issued by Football SA from time to time and located [here](#).

Football SA Regulations means any Football SA rules, regulations or policies, including but not limited to these Regulations and the Football SA Disciplinary and Judicial Bodies Regulations, as promulgated or issued by Football SA from time to time.

Football SA Disciplinary and Judicial Bodies Regulations means the Football SA Regulations relating to the disciplinary and judicial bodies procedures as promulgated or issued by Football SA from time to time.

Forfeit means Match that is forfeited by one Team, in which case the non-forfeiting Team receives Competition points.

Foundation Club means one of the eight original clubs admitted to the National Second Tier Competition by FA.

Goal means a goal scored by a Team in a Match.

Goal Difference means the difference between the number of goals scored by a Team (Goals For) and the number of goals scored against that Team (Goals Against).

Ground Steward means the person appointed by a Club to assist the Match Officials and monitor the behaviour of Participants at a Match.

Home and Away Season means the Competition comprising of one Match at each Team's Home Venue and one away Match at another Venue including but not limited to the Men's National Premier League, State League 1, State League 2, Women's State League, Women's Community and YCC.

Home Team means the Team that is playing the Match at its Home Venue and / or, where the Match is played at a Neutral Venue, the Team that appears first on the Match list.

Home Venue means the venue where a Match is played that is the home venue of a Team.

Host Club means a Club which hosts Matches at their Home Venue regardless of whether the Club is participating in the Matches.

Ineligible Player has the meaning set out in clause 5.6 of these Regulations.

Interchange means the interchange bench whereby a Team has the ability to replace one Player for another Player during a Match. Interchange permits a Player that has been replaced to come back into the Match when required.

Laws of the Game means the official laws of the Match of football and futsal as proclaimed by FIFA, as amended from time to time by FIFA, a copy of which can be found [here](#).

League means the Competition in relation to specific gender and age grades.

Life Member means a person who has been recognised by the Board for their outstanding contribution to the sport of football.

Mapped means when a Player is allocated a specific primary Team in the Competition Management System.

Match means a competitive Match that is played between two Teams as part of any Competition.

Match Commissioner means a person appointed by Football SA to a Match to ensure that the minimum Match day standards of a Competition are complied with.

Match Official means a referee, assistant referee or fourth official who has been appointed by Football SA to officiate a Match in accordance with the Laws of the Game and the relevant Competition requirements.

Match Officials Appointment Committee has the meaning as set out in clause 6.1.

Match Report means a written report submitted by a Match Official or Club Official providing details relating to a Match.

Match Sheet means the sheet that must be filled in by a Team or Club and submitted to the Match Official prior to each Match.

Member means a registered member of a Club or Affiliated Association.

Member Federations means the member state organisations of Football Australia, including Football SA.

Minimum Venue Requirements means the standards prescribed in the Football SA Venue Requirements Policy and these Regulations, which all Clubs are required to comply with, as amended by Football SA from time to time.

MiniRoos means the Football SA grassroots program for children aged Under 6 to Under 11, which is conducted in accordance with the MiniRoos Guidelines.

MiniRoos Guidelines means the Football SA guidelines for the MiniRoos competition, as amended by Football SA from time to time and can be found [here](#).

Misconduct means inappropriate or unacceptable behaviour that does not comply with the Football Australia Regulations and / or Football SA Regulations or any other document governing the sport.

National Disciplinary Regulations means the Football Australia's National Disciplinary Regulations located [here](#) and as promulgated or issued from time to time.

National Premier League or NPL means the national state-based competition conducted by Member Federations for Senior Men and Senior Women.

National Registration Regulations means the Football Australia National Registration, Status and Transfer Regulations as issued by Football Australia from time to time.

National Registration System means the system on which Players and Officials are registered to participate in a Competition as directed and amended by Football Australia from time to time.

National Second Tier Competition means the national competition staged by FA between the NST Clubs, known as the "National Second Tier" or any other name notified by FA from time to time.

Neutral Venue means a Venue that is not the Home Ground of either Team participating in the Match.

NST Club means any entity admitted by FA to field a Team in the National Second Tier Competition.

NST Club Participation Agreement means the agreement setting out the terms on which FA grants, and NST Clubs accept, the right to participate in the National Second Tier Competition.

Official means Team Official, Club Official or Match Official.

Open Age refers to all Competitions where there is no age restriction, including the NPL, WNPL, State League 1 Competition, State League 2 Competition, WSL and Women's Community League and excluding Youth Competitions and Under 18 divisions.

Participant means Players, Team Officials, Match Officials and Spectators.

Player means any person who participates in a Match, irrespective of whether they are registered with Football Australia, Football Australia, are an Amateur or Professional or participate in the Senior Competitions or Youth Competitions.

Player Points System (PPS) means the player points system policy that is used by Clubs to determine and submit their Player Roster to Football SA.

Player Roster means the roster of Players submitted by a Club to Football SA for a Competition.

Postponed means a Match that has not been played for any reason and is rescheduled.

Pre-Season Competition means any sanctioned Competition prior to the start of a Season that is administered by Football SA and are not considered official Matches for the purpose of playing statistics.

Professional Competition means a Competition in which at least one (1) Professional Player is registered.

Professional Player means a Player who has a written contract with a Club, under which he or she is paid more than the expenses he or she effectively incurs to play football for that Club as defined by Article 4.1 of the National Registration Regulations.

Promotion means the transfer of a Team to the next highest division of the Competition in accordance with the relevant Competition requirements.

Referee means the appropriately qualified person engaged by the Competition Administrator to enforce the Laws of the Game during a Match.

Referee Liaison Officer means the person appointed by a Club as the key contact for Match Officials for Football SA.

Registration means the entry of a Player, Team, Club or Affiliated Association in a Competition, or for an Official for the purposes of fulfilling their duties.

Regulations means these Football SA Competition Regulations, as amended by Football SA from time to time.

Report means a report submitted by a Match official against a Player or Team for breach of Football SA Regulations.

Representative Team means a Team that is selected by the relevant body to represent the State or Nation.

Relegation means the transfer of a Team to the next lowest division of the relevant Competition in accordance with the relevant Competition requirements.

Reserve Team means the team designated as secondary to the First Team within a Competition.

Season means the series of Matches in a Competition, from the first Match to the concluding Match.

Senior Grade Player means a Player who:

- a. Is over 21 years of age during the year of the Competition; and/or
- b. has participated in a total of ten (10) or more First Team Matches; and/or
- c. has participated in a Senior Competition Match in the same year of Competition.

Senior Competitions means the Senior Men's Competition and Senior Women's Competition.

Senior Elite Competitions means the Men's National Premier League, State League 1, State League 2, Women's National Premier League and Women's State League.

Senior Men's Competition means the men's National Premier League, State League 1 and 2 Competitions conducted by Football SA and comprises of Under 18s, Reserves and First Team.

Senior Women's Competition means the Women's National Premier League and Women's State League Competitions conducted by Football SA and comprises of Reserves and First Team.

Spectator means a person who attends a Match to spectate.

Spectator Code of Behaviour means the Football Australia Spectator Code of Behaviour, as promulgated or issued by Football Australia from time to time.

State League 1 Competition means the senior men's Competitions conducted by Football SA that sits underneath the National Premier League.

State League 2 Competition means the senior men's Competitions conducted by Football SA that sits underneath State League 1 Competition.

State League Clubs means all Clubs that participate in the State League 1 Competition, State League 2 Competition and the Women's State League Competition.

Substitute means a Player who has replaced another Player during a Match, as listed on the Match Sheet.

Substitution means the replacement of one Player for another Player during a Match, whereby the replaced Player is not permitted to return to the Match once replaced.

Suspension means a ban from attending and / or participating in Matches and / or Competitions sanctioned or conducted by Football SA.

Team means a registered group of Players and Officials nominated by a Club to represent the Club in a Competition.

Team Manager means a person who is registered with Football SA and is appointed to administer aspects of a Team's training and Match requirements.

Team Official means any person involved with the management, preparation or participation of a Team (whether paid or unpaid), including the Coaches, Team Managers, medical staff, other support staff or any other person acting for or on behalf of a Club or Affiliated Association.

Technical Area means the designated area where Team Officials and Substitutes are located during a Match.

Trial Match means a Match that is sanctioned by Football SA between two Clubs which does not form part of a Competition.

Trials means Club tryouts where players are evaluated for selection to a team for the upcoming season, distinct from regular matches and friendly fixtures.

Unregistered Player means a player who does not meet the Registration requirements for a Competition.

Visa Player means a Player who has not been issued an indefinite stay within Australia as per the conditions of their Visa or government issued entry permit.

Venue means the location of a Match.

Venue Requirements Policy means the Football SA Venue Requirements Policy dated August 2021 as promulgated, issued or amended by Football SA from time to time, which can be found [here](#).

Volunteer means a non-paid person who undertakes volunteering duties for a Team, Club or Affiliated Association as part of a Competition.

Women's Community League means the Open Age women's Competitions that are conducted by Football SA excluding the WNPL and WSL.

Women's National Premier League (WNPL) means a state based national Competition conducted by Member Federations for female Players currently known as the Women's National Premier Leagues.

Women's State League Competition (WSL) means the Competition conducted by Football SA that is the second tier to the Women's National Premier League.

Youth Club Championship (YCC) means the Competition across multiple age groups for Senior Men's Clubs that participate in the Senior Men's Competitions and Senior Women's Clubs that participate in the Senior Women's Competitions.

Youth Competitions means the Youth Club Championship, Youth Premier League and Youth State League Competitions.

Youth Player means a Player who is 17 years of age or under during the year of Competition and participates in the Youth Competitions.

Youth Premier League (YPL) means the League that conducts Competitions for under 12 and under 17 age groups that participate in the Senior Men's Competitions only.

Youth State League (YSL) means the League that conducts Competitions across multiple age groups.

3. MINIMUM VENUE REQUIREMENTS

3.1. Overview

- 3.1.1.** This section shall be read in conjunction with the Venue Policy and all information herein is regarded as complementary to the Venue Policy. In the event of any conflict or inconsistency with this section and the Venue Policy, the provisions of the Venue Policy shall prevail.
- 3.1.2.** The Venue Policy outlines the Minimum Venue Requirements applicable to each Football SA Competition, including details on lighting, facilities for Players, Officials and Spectators, safety, security, and Field of Play requirements.

3.2. Youth Requirements

- 3.2.1.** Clubs must ensure it has access to a sufficient number of pitches for the Teams nominated (e.g. 1 pitch for every 4 Teams in Under 14 to Under 17 divisions).
- 3.2.2.** Youth Club Championship Matches should be played on the best playing surface available at the Venue with a pitch fence.
- 3.2.3.** If there is no spectator fence fully enclosing the playing field for Youth Competition Matches, (Under 6- 17) the Host Club shall mark a boundary line not less than two (2) metres outside the touch lines and the goal lines. It is recommended that Spectators are located behind a physical barrier i.e. roping of the sideline; and
- 3.2.4.** where there is no Spectator fence, Spectators where possible are to be located on the opposite side to the technical areas. Where this is not practical, Spectators are to be located at least a minimum of 5 metres from the Technical Areas.
- 3.2.5.** For Player and public safety, adjacent pitches shall have at least 3 metres space between each pitch, unless approved by the Competition Administrator.
- 3.2.6.** Clubs must have a minimum size field in accordance with the Laws of the Game.
- 3.2.7.** Changing room facilities accommodating for the Home Team, Away Team and Match Officials.
- 3.2.8.** Club Venues shall have female, male and disabled toilet facilities, be entirely non-smoking and include designated alcohol-free areas.
- 3.2.9.** Club Venues must enable emergency vehicles to gain access to all fields.
- 3.2.10.** The Club must have a fully supplied first aid kit for each Team that they field and a designated person, with first aid qualifications, to administer the first aid.

3.3. Medical Requirements

- 3.3.1.** Each Club shall ensure medical personnel are appointed and in attendance at Matches and training. Where no requirements are stipulated, the Club must have a person that holds a minimum of a senior first aid qualification in attendance.
- 3.3.2.** No medical personnel shall enter the Field of Play except with the permission of the Match Official and for the purpose of attending an injured Player.

3.4. Use of Club Venues

- 3.4.1.** Football SA may from time to time use the Venue of any Club for any special Match or Matches except where such use is not permitted under the terms of a Club's lease of the Venue.
- 3.4.2.** In default of agreement, Football SA shall negotiate the amount to be paid to the Club for the use of its Venue provided the amount shall not be less than the prescribed amount for an enclosed Venue in good condition.
- 3.4.3.** Where a Match is played at a neutral Venue, the Teams involved in the Match may be required to pay a Venue hire fee. This fee will be set by the Venue manager. Gate and canteen revenue will remain with the Venue manager unless otherwise negotiated.

3.5. Ground Registrations

- 3.5.1.** All Clubs shall register their playing Venue with Football SA.
- 3.5.2.** Clubs must be committed to the development of their Venue and facilities and must fulfil the Minimum Venue Requirements, as outlined in these Regulations and the Venue Policy to compete in the relevant Competition. Football SA at its discretion, may provide a specific timeframe for Clubs to fulfil the Venue requirements.
- 3.5.3.** All Venues may be inspected annually by Football SA, and Football SA will notify Clubs of any deficiencies at the Club's Venue pursuant to the Venue Policy that must be remedied as specified by Football SA.

- 3.5.4. Football SA shall require any Club that does not remedy any deficiency within the specified timeframe as outlined by Football SA, to play its home Matches at the Venue of another Club as approved by Football SA until such deficiencies have been remedied and the Venue has been inspected and passed such inspection by Football SA.
- 3.5.5. If a Club does not meet the Minimum Venue Requirements of the relevant Competition, Football SA may direct the Club to play at an alternative Venue approved by Football SA or not permit entry of the Club or Team into the relevant Competition.

3.6. Ground Facilities and Club Signage

- 3.6.1. A maximum of ten (10) people shall be permitted in their Team's Technical Area unless otherwise specified. This includes five (5) registered Team Officials and no more than five (5) Substitutes.
- 3.6.2. Clubs shall prominently display appropriate signage:
 - a. stating that it is an offence for unauthorised persons to be inside the fence of the Field of Play and to go on to the Field of Play;
 - b. stating that it is an offence for unauthorised persons to enter the dressing rooms;
 - c. indicating the location of the First Aid areas for Players, Officials and the public during training and Competitions; and
 - d. to promote Football SA and such Sponsors as Football SA may determine from time to time.
- 3.6.3. The applicable fine and/or penalty for a Club in breach of clause 3.6 is as prescribed in Appendix A of these Regulations.

3.7. Facilities and Ground Arrangements

- 3.7.1. Any Club which does not meet the Minimum Venue Requirements for each relevant Competition will not be eligible for entry or Promotion into that Competition in accordance with these Regulations.
- 3.7.2. Clubs that do not comply with the Minimum Venue Requirements within the specified timeframe as outlined by Football SA of each season will not be eligible for Promotion.
- 3.7.3. All Match Officials rooms and Player change rooms must have a sanitary disposal bin.
- 3.7.4. Football SA may grant special dispensation to Clubs who are in the process of upgrading their facilities in accordance with Football SA's requirements however this will be at the discretion of the Football SA and in a timely manner so that all requirements are fulfilled prior to the commencement of any season.

3.8. Field Markings

- 3.8.1. Each Club shall keep and maintain its Venue in the best possible condition.
- 3.8.2. The Club at whose Venue a Match is to be played shall mark and equip the Field of Play in accordance with the Laws of the Game and shall re-mark the Field of Play during the interval if so directed by the Referee.
- 3.8.3. If a Match is not played due to the Match Official determining the field is not marked according to the Laws of the Game, the Home Team will Forfeit the Match three (3) goals to nil (0).
- 3.8.4. Where a Venue is not surrounded by a spectator fence, a boundary line shall be marked not less than two (2) metre from the sideline of the field on the opposite side to the Technical Areas. Spectators are only permitted to be on the side where the boundary line is marked.
- 3.8.5. Any Official, Spectator or other person who enters within the boundary line shall be deemed to have entered the Field of Play and may be deemed to have breached the Code of Conduct and these Regulations.
- 3.8.6. Other lines are permitted provided they are a different colour and clearly distinguishable from each other.
- 3.8.7. Pesticides, herbicides and other products such as 'Round Up' can be harmful to a person's health and may also cause damage to the playing surface. As a rule, such products should not be used under any circumstances.
- 3.8.8. Products such as agricultural limestone, or water-based spray paint or other similar material which will not endanger Venue users or damage turf grasses are the substances that should only be used for line marking. All Clubs should ensure they consult with their local council relating to permitted substances to be used in the marking of fields.
- 3.8.9. To ensure the safety of all Players, Match Officials and Spectators, any Club found to be in breach of these requirements, will not be able to play any home Matches until the breach has been rectified or Football SA grants dispensation from these requirements.
- 3.8.10. Any home club whose Match is postponed/Abandoned due to the use of prohibited substances for marking their Field of Play (as above), will Forfeit the Match to the opposing Team with a three (3) goals to nil (0) score line being recorded.
- 3.8.11. The Host Club will also incur the Forfeit of Match fine if in breach of clause 3.8 as prescribed in Appendix A (Schedule of Fines and Penalties). The penalty may not be applied if Football SA determines that the marking of the field was outside of the control of the Host Club.

3.9. Installation of Goals

- 3.9.1.** It is the responsibility of all Clubs to ensure they provide a safe environment for their Participants. To minimise risk and to prevent injury, football goals are to be constructed and installed to the correct safety standards as per the Laws of the Game.
- 3.9.2.** Construction of goal frames for either fixed or portable use must be secure and stable. The net must be secured to both the goal frame and the Venue.
- 3.9.3. Fixed Football Goals**
 - a. All football goals installed as a permanent structure on a football field must be properly secured, installed at the regulation width and height, as per the Laws of the Game, and should have no sharp edges protruding that may cause injury and must be constructed with a solid material.
- 3.9.4. Portable Football Goals**
 - a. If a Club uses portable goals for training or Competition, it must ensure that these goals conform to the mandatory requirement of Australian Standard AS4866.1-2007. The manufacturer of portable goals should provide the Club with a certificate of conformity. All portable goals must be anchored during use as per Australian Safety Standards. All goal posts must be constructed with a solid material such as metal.

3.10. Change of Venue

- 3.10.1.** No Club shall change its playing Venue without the permission of Football SA.
- 3.10.2.** Any Club which desires to change its Venue shall apply to Football SA giving full particulars of the proposed new Venue.
- 3.10.3.** All requests for changes of Venue are subject to approval by Football SA in accordance with the Minimum Venue Requirements of the Competition.
- 3.10.4.** The Venue of any Match shall not be changed by the competing Clubs without the prior permission of the Competition Administrator.

3.11. Control of Competitions

- 3.11.1.** No person other than the participating Players, and the Match Officials shall enter the Field of Play while a Match is in progress unless medical personnel are directed to enter the Field of Play by the Match Official in accordance with Clause 3.3.
- 3.11.2.** No person shall Coach a Team from within the spectator fence or boundary line, other than the appointed Coaches of the competing Teams, who may Coach their Players from their Club's Technical Area.
- 3.11.3.** In this Clause, a Club's Technical Area means the area in front of the Club's Substitutes' bench plus one (1) meter on either side of the bench and extending to a distance one (1) metre from the touch line.
- 3.11.4.** No person other than Team members or Officials shall enter that Team's dressing rooms.
- 3.11.5.** No person other than the Match Officials shall enter the Match Official's dressing room except with the permission of the Match Official.
- 3.11.6.** Only the Substitutes and registered Team Officials shall occupy their Team's Technical Area.

4. COMPETITION OPERATIONS

4.1. Competitions

- 4.1.1. Football SA shall conduct Competitions each Season.
- 4.1.2. The composition of League structures will be determined by Football SA in its ultimate discretion in consideration of Team nominations received from Clubs and is subject to Clubs meeting the relevant competition requirements.
- 4.1.3. All Clubs and Affiliated Associations registered with Football SA shall take part in all Competitions and such other special Competitions as Football SA may determine from time to time.

4.2. Admission to Competitions

- 4.2.1. Admission into a Competition is subject to the Club fulfilling the minimum Competition requirements in accordance with the Venue Policy, the Minimum Venue Requirements and the number of positions available for Teams in the Competition, in the full discretion of Football SA.
- 4.2.2. Football SA will have the sole and absolute determination on admission into a Competition.
- 4.2.3. Football SA may decide to admit an applicant upon or subject to any terms or conditions it may think fit.
- 4.2.4. The Football SA Academy and Football SA Development Squads may enter a Team/s into the Competitions on approval of Football SA.

4.3. Admission Charges and Season Passes

- 4.3.1. The maximum admission charges below shall apply for all Matches of Football SA Competitions played at local Club Venues.
- 4.3.2. Admission charges for all Matches and Finals will be set on an annual basis by Football SA.
- 4.3.3. Where appropriate Football SA shall fix the maximum admission charges for all Competition Matches conducted by Football SA.
- 4.3.4. Admission Charges for State League 2 will apply where the venue is fenced, and access is through an admission point. Provisions for family tickets available, all prices include GST.
- 4.3.5. Football SA shall issue on a yearly basis to designated persons a Season pass to cover admission into specified Matches throughout the season. Passes will be provided to each individual registered Player, registered Club Officials, nominated Club sponsors, Hall of Fame and Life Members, Football SA Board Members, Staff and sponsors, media, Match Officials and any other parties as determined by Football SA. These passes shall allow individual entry into Matches unless otherwise specified.
- 4.3.6. The passes will not be valid for any Final Series conducted or grand Finals unless otherwise determined by Football SA. The Competition Administrator will provide information relating to the issuing of Season Passes.
- 4.3.7. Season passes are not transferrable and are provided at the sole discretion of Football SA.
- 4.3.8. Where a Women's National Premier League (NPL) or Women's State League (SL) is played as a double header with a Men's NPL or SL Match, the admission fee charged will be based on the Match that has the higher fee.
- 4.3.9. If a Club identifies that a Season pass has been transferred, the Club can confiscate the pass and forward it on to Football SA.

Competition	Maximum chargeable amount		
	Adult	Concession	Child (under 16)
Men's National Premier League	\$15.00	\$7.00	FREE
Women's National Premier League	\$5.00	\$2.00	FREE
Men's State League 1	\$10.00	\$5.00	FREE
Women's State League	\$5.00	\$2.00	FREE
Men's State League 2	\$5.00	\$2.00	FREE

4.4. Nomination Form

- 4.4.1.** Each Club shall nominate to participate in Competitions conducted by Football SA on the prescribed form as required and provided by Football SA.
- 4.4.2.** Once the nomination form is submitted, if a Club makes any changes to the information contained on the form, any changes must be immediately notified to the Competition Administrator.
- 4.4.3.** All new Clubs are required to complete the Football Australia Application for Registration of Football Club – Prescribed Form NRR02. This form must be completed and submitted with any required nomination form.

4.5. Player/Club Relations

- 4.5.1.** Each Club shall inform and make available to all Players copies of:
 - a. FIFA Laws of the Game;
 - b. Football Australia Regulations and Football SA Regulations;
 - c. the Club rules and Regulations, policies and procedures and codes of conducts; and
 - d. any agreement entered with the Player.

4.6. Financial Obligations

- 4.6.1.** Each Club and Affiliated Association shall abide by Football SA financial obligations as determined by Football SA. Notification of the fees to be paid by Clubs will be provided on an annual basis.
- 4.6.2.** All membership fees and any outstanding accounts due to Football SA shall be paid within 30 days of invoicing or as stipulated by Football SA.
- 4.6.3.** No Teams or Players will be permitted to be registered unless the Club and Affiliated Association are financial.
- 4.6.4.** Failure to adhere to clause 4.6.2 above will result in a Club being sent a reminder notice to settle the account.
- 4.6.5.** A Club that fails to settle the account within 60 days from the invoice date (“the Default Date”) will incur a debtor management fee (“the Debtor Management Fee”):
 - a. The Debtor Management Fee will be calculated as a one-off fee, being 10% of the invoices total value unpaid after 60 days.
 - b. If a Club anticipates that it will have difficulty paying the account within the 60 day period then a payment arrangement may be negotiated with the Football SA subject to:
 - i. The request for payment arrangement being agreed to by Football SA prior to the Default Date; and
 - ii. The Club agreeing to the payment arrangement being a direct debit from their nominated bank account.
- 4.6.6.** If the Club falls into arrears with its payment arrangement, then Football SA will be entitled to immediately apply the Debtor Management Fee which shall be calculated from the Default Date.
- 4.6.7.** At the time the Debtor Management Fee is applied, Football SA will issue a 21-day notice to settle the outstanding account (including Debtor Management Fee). If the Club fails to pay the amount within 21 days, 3 Competition points may be deducted from the Clubs senior side. In addition, any Matches played whilst the account remains unpaid will not count as Competition points.
- 4.6.8.** If at the end of a season a Team has been Promoted but the Club has not paid all amounts owing to Football SA by 31 October of each year, the Team will not be promoted.
- 4.6.9.** If the deduction of any points under clause 4.5.7 above results in a Team or Teams being relegated, the relegation will stand even if the outstanding monies are subsequently paid.

4.7. Insurance

- 4.7.1.** All Clubs shall ensure they have the necessary insurance cover for their Club. All Clubs must ensure they have current public liability, personal accident insurance, directors and officer’s insurance policies and other insurance coverage as Football SA may prescribe from time to time. If the insurance cover is not

provided through Football SA, the onus is on the Club to ensure they have the required insurance cover and provide details to Football SA on an annual basis. Failure to comply may result in the Club's deregistration by Football SA.

- 4.7.2. Football SA will provide personal accident insurance and other types of insurances as determined, on a yearly basis to Clubs as part of their membership application and registration. This personal accident insurance will cover all Players and Club officials including Club volunteers.
- 4.7.3. Football SA will provide details of each of the insurance policies to Clubs on an annual basis. This information will also provide details on how a Club or individual person may make an insurance claim.

4.8. Matches and Duration of Matches

- 4.8.1. Football SA shall prepare and publish lists for the various Matches and tournaments organised by Football SA. Competition Matches are to be played as scheduled by Football SA.
- 4.8.2. Prior to the release of official Matches, Football SA will consult Clubs by providing a draft list of Matches for comment.
- 4.8.3. Competition Matches for community and Youth Competitions are to be scheduled to be played on Sunday or as scheduled by Football SA.
- 4.8.4. Once the official Matches have been released, Football SA will only permit changes to these Matches where extenuating circumstances require in its full discretion.
- 4.8.5. All Matches in any Competition shall be played on the dates and at the times fixed in Football SA's official list of Matches, unless Abandoned or Postponed by the Match Official in accordance with the Laws of the Game or changed in accordance with these Regulations.
- 4.8.6. Football SA has the authority to change dates and times of scheduled Matches by giving notice.
- 4.8.7. For Women's Community League and Youth Competitions, once the official Matches have been released, a request to change the date, time and/or Venue of a Matches must be submitted to Football SA by the Club no later than 14 days prior to the scheduled Match. Where a Match change is made, Football SA will notify participating Clubs of the change via email.
- 4.8.8. If a Club does not submit a request for a change of Match within the timeframe outlined in clause 4.8.7 above, a change may only be granted if both Teams involved in the Match agree to the change and the request is made to the Football SA seven (7) days prior to the scheduled Match. Requests outside of the 7 Day timeframe will only be sanctioned by Football SA where extenuating circumstances exist.
- 4.8.9. Where a Club fields multiple Teams, and all Matches are scheduled to be played on the same day, the highest-grade Team will be scheduled to be played as the last Match of the day. A Club may apply for an exemption to this rule by submitting a request in writing to Football SA.
- 4.8.10. Where a mid-week Match is conducted, no Match may commence prior to 6:00pm or no later than 8.15pm, unless notified by Football SA.
- 4.8.11. Match Officials shall adjust playing times accordingly ensuring the proceeding Matches kick off at the scheduled time unless otherwise notified by Football SA.
- 4.8.12. In all cases additional allowances for lost time as per the Laws of the Match is permissible subject to time restrictions at each Venue on Match days.
- 4.8.13. The result of all Matches must be submitted online in the Football SA Competition Management System by the Match Official. Where no Match Official is present, the Home Team must submit the results and statistics no later than one (1) hour post completion of the Match.
- 4.8.14. Any changes to Matches are at the sole and absolute discretion of Football SA.
- 4.8.15. The following duration of Matches will apply for the men's and women's Matches:

Competition	Halves	Half Time Break
Senior Men's	2 x 45 minutes	15 minutes
Senior Women's	2 x 45 minutes	15 minutes
Division 1 and Division 2	2 x 45 minutes	10 minutes
Division 3 and below	2 x 40 minutes	10 minutes

4.8.16. The following duration of Matches will apply for the Youth Matches:

Age Group	Halves	Half Time Break
Under 15-17	2 x 40 minutes	10 minutes
Under 14	2 x 35 minutes	10 minutes
Under 12 & 13	2 x 30 minutes	10 minutes
Under 10 & 11	2 x 25 minutes	5 minutes
Under 8 & 9	2 x 20 minutes	5 minutes
Under 6 & 7	2 x 20 minutes	5 minutes

4.9. Match Forfeits and Cancellations

- 4.9.1.** For any Club whose Team or Teams fail to play or complete any league or cup Match on the date and at the time fixed by Football SA, the following shall occur:
- The allocation of any points for the Match will be Forfeited to the Club's opponent, who will be deemed to have won the Match by a score of three (3) goals to nil (0) or if the opposing Team has won the Match by three goals or greater, the score line will stand;
 - be fined the prescribed amount as stipulated in Appendix A of these Regulations; and
 - be liable to such further penalties as Football SA or the committee it appoints to hear the matter may determine.
- 4.9.2.** Where a Forfeit has been applied, the statistics of the Club that did not Forfeit the Match, that being goal scorers and best and fairest votes, will be retained. Red and yellow cards will be applied in accordance with the National Disciplinary Regulations.
- 4.9.3.** If in the event both Teams are issued with a Forfeit, no points or Goals will be awarded to either Team.
- 4.9.4.** If a Match has been changed by Football SA and notification is not provided to the Match Officials who attend the Match, the Match Official shall be entitled to 50% of their normal fee.
- 4.9.5.** If a Club fails to notify Football SA of any changes to a Match including changes to kick-off times, the Club will Forfeit the Match, be fined the Forfeit fee and will be required to compensate the Match Officials if they attend the Match, 50% of their normal fee.
- 4.9.6.** For Youth Competitions the amount of the fine may vary depending on if the Club has provided notification or no notification to Football SA and the number of Matches that the team has Forfeited during the season as is prescribed in Appendix A (Schedule of Fines and Penalties).
- 4.9.7.** Football SA may at its absolute discretion not implement a Forfeit penalty if there are exceptional circumstances.

4.10. Abandoned Matches and Walk-offs

- 4.10.1.** If any Match is Abandoned before the completion of the time specified in the Laws of the Game or Clause 4.8 of these Regulations for any reason whatsoever, the Clubs whose Teams took part in the Match shall within 48 hours of the Match, submit a full report in writing to the Competition Administrator.
- 4.10.2.** Football SA or any appointed Disciplinary Committee shall have discretionary power to determine the outcome of any Abandoned Match. Where the abandonment of a Match has occurred due to events outside of the control of the Teams involved, the result of an Abandoned Match may stand if the number of minutes of the Match has been completed at 4.10.10 in the full discretion of Football SA. Where there is a tie in a Cup Match when it becomes an Abandoned Match, the Match may be replayed to ascertain a result from the Match for the Teams.
- 4.10.3.** If a Match is Abandoned prior to or at half time, all Match Officials will be entitled to receive 50% of their normal Match fee. If the Match is Abandoned once the second half has commenced, all Match Officials will be entitled to receive 100% of their normal Match fee. If it is determined by Football SA that the result of the Abandoned Match will stand, then the Match Official will be entitled to receive 100% of their normal Match fee.
- 4.10.4.** In the event of abandonment in a Cup Match, the Match will be postponed and replayed at a later date as determined by Football SA.

- 4.10.5.** A yellow card issued during an Abandoned Match will be annulled if the Match is replayed and upheld if the Match is not replayed.
- 4.10.6.** A red card issued during an Abandoned Match will be upheld regardless of whether the Match is replayed or not.
- 4.10.7.** In accordance with the National Disciplinary Regulations clause 13.1, if a Match is Abandoned, cancelled or Forfeited, a suspension issued, is only considered to be served if the Team to which the suspended Participant belongs is not responsible for the conduct that led to the abandonment, cancellation, or Forfeiture.
- 4.10.8.** No Club shall walk off or refuse to allow play to continue for the full duration of the time specified in the Laws of the Game or Clause 4.8 of these Regulations.
- 4.10.9.** If any Match is Abandoned before the completion of the Match because of a disturbance involving Players, Club officials or Spectators for which a Club is responsible for or if a Team of a Club walks-off or refuses to allow play to continue, the following will apply:
 - a. Any points allocated for the Match shall be Forfeited to the Club's opponent who shall be deemed to have won the Match by a score of three (3) goals to nil (0). If at the time of the abandonment or walk off, the opposing Team is winning the Match by a greater margin than three (3) goals, the score line at the time of the abandonment or walk off, will stand.
 - b. The Club, the Players and Officials of the Club shall be deemed guilty of serious misconduct and shall be liable to such further penalty as Football SA may determine in its ultimate discretion.

4.10.10. The following table outlines the defined minute of abandonment based on the duration of the Match:

	Duration of Match	Defined minute of Abandonment
Senior Matches	90-minute Match	From 65 minutes
	80-minute Match	From 60 minutes
Youth Matches	Age group dependant	From Half Time

4.11. Disturbances

- 4.11.1.** If any Match is Abandoned or terminated before the completion of the time specified in the Laws of the Game or clause 4.8 of these Regulations because of a disturbance involving Players, Officials or Spectators, the case shall be referred to Football SA or any such committee or person as it may appoint for determination.
- 4.11.2.** Both Clubs shall be responsible for taking all possible measures to ensure the orderly behaviour of the crowd and the safety of the Match Officials, Players and the Team Officials of the participating Teams.
- 4.11.3.** All Clubs and Affiliated Associations shall be responsible for the behaviour of their Players, Club Officials and Spectators whether at their Home Venue, at their opponent's Venue or at a neutral Venue.
- 4.11.4.** If at any Match, a Club official or a Spectator:
 - a. uses abusive, threatening or insulting language;
 - b. interferes with a Match Official in any way; or
 - c. enters the Field of Play

the Match Official may:

- a. stop the Match;
 - b. confer with the officials of the Teams participating in the Match; and / or
 - c. require the exclusion of the official or Spectator from the Venue before re-starting the Match.
- 4.11.5.** If after speaking with the Club officials the Match cannot be restarted due to the behaviour of the Spectators or officials, the Match Official may abandon the Match.
 - 4.11.6.** Where a Match is Abandoned or terminated under this rule or the Match Official stops a Match under this rule, the Match Official shall include details of the matter in the Match Report.

4.12. Inability to Field Teams and Postponed Matches

- 4.12.1. Clubs are required to promote eligible players from lower grades to ensure that higher-grade matches proceed as scheduled.
- 4.12.2. If a Club is unable to field a Team because of illness or other exceptional circumstances beyond the control of the Club:
 - a. the Club may apply to the Competition Administrator for approval for the postponement of the Match; and
 - b. if the Competition Administrator approves the postponement of the Match, the Match shall be played at a time and place as sanctioned by Football SA in accordance with this clause.
- 4.12.3. If a Match is Postponed because of the weather or any other cause over which the Clubs have no control over or the Teams are ordered to re-play a Match, the Match shall, if practicable, be played within seven (7) days of the original Match for all Senior Elite Competitions or as approved by the relevant Competition Administrator.
- 4.12.4. The Match shall be played at a time and place agreed between the Clubs with the approval of the Competition Administrator.
- 4.12.5. The Home Team must list the Club appointed Match Official within the Football SA Competition Management System as a non-accredited referee.

4.13. Withdrawal of Teams from Competition

- 4.13.1. If a Team is withdrawn from a Competition before all Teams have played each other once, all Matches will be recorded as a no played Match. All goal scorer statistics and referee votes gained in Competition Matches played involving the withdrawn Team will be removed. All other statistical information including disciplinary records, will be retained.
- 4.13.2. If a Team is withdrawn after the point of the season at which all Teams have played each other an equal number of times the following will apply:
 - a. all results will be retained;
 - b. goals scored for and against will be retained;
 - c. referee votes will be retained;
 - d. all disciplinary records will be retained; and
 - e. a Forfeit result of three (3) goals to nil (0) will apply to all remaining Matches.
- 4.13.3. The applicable fine and/or penalty for a Club in breach of clause 4.13 is as prescribed in Appendix A of these Regulations.

4.14. Number of Players Required

- 4.14.1. Teams are required to commence each Match with eleven Players at any given time in all divisions except MiniRoos through to Under 13.
- 4.14.2. Where a Team is unable to field eleven (11) Players, a Match may only commence if the Team has a minimum of seven (7) Players on the field.
- 4.14.3. If a Team has less than seven (7) Players, the Match will not commence, and the Team will Forfeit the Match. If the Match has already started and a Team is unable to maintain a minimum of seven (7) Players on the field, the Match Official is to stop the Match. The Team with less than seven (7) Players on the field will Forfeit the Match.
- 4.14.4. For matches, including those in MiniRoos, the following minimum number of players is required for each match format:
 - a. 9v9 matches – minimum of 5 players
 - b. 7v7 matches – minimum of 4 players
 - c. 4v4 matches – minimum of 3 players

4.14.5. All MiniRoos Matches are to commence with the number of Players as outlined in the MiniRoos Guidelines or under 12/13 playing format and rules.

4.14.6. In MiniRoos Competitions, Clubs are permitted to share players in cases of low player numbers.

4.15. Youth Team Nomination Requirements

4.15.1. Youth Club Championship

- a. The Youth Club Championship will be established for the Under 13 through to the Under 16 Competitions only.
- b. Only Clubs which participate in the National Premier League Men's or State League Men's are able to nominate to participate in the Youth Club Championship.
- c. Only Clubs which participate in the Women's National Premier League or Women's State League are able to nominate to participate in the Youth Girls Club Championship.
- d. Any Club which nominates to participate in the Youth Club Championship that did not participate in the Season prior is required to enter from the lowest available Tier.
- e. Clubs that participate in the Senior Men's or Women's Competition are strongly encouraged to field Youth Teams in line with the National Premier League (NPL) and State League Competition Requirements.

4.15.2. Youth Premier League

- a. The Youth Premier League will be established for the Under 12 through to the Under 17 Competitions only.
- b. Only Clubs which participate in the Men's and Women's National Premier League or Men's and Women's State League are able to nominate to participate in the Youth Premier League.
- c. When there are insufficient Teams for create a YPL division, Clubs not involved in Senior Men's or Women's Competitions may be permitted to participate in the YPL.

4.15.3. Youth State League

- a. Clubs that participate in the Senior Men's or Women's Competition, Women's Community Leagues and any other Club may nominate Teams into the YSL. There is no restriction on the number of Teams that a Club can nominate per age group in the YSL.

4.16. Youth League Formation

4.16.1. Youth Club Championship

- a. The YCC will comprise the Under 13, Under 14, Under 15 and Under 16 Teams. The YCC will be comprised into separate Tiers.
- b. The number of Clubs placed into any one tier will be at the discretion of Football SA.
- c. Clubs are required to submit to Football SA by a date disclosed by Football SA each year the nominated teams for the YCC. In its submission, Clubs must provide a list of players not exceeding 15 players for Under 13 and not exceeding 18 players for Under 14, 15, and 16. For 9 v 9 matches, Clubs must have a minimum of 12 players and a maximum of 15 players. For 11v11 matches, Clubs must have a minimum of 14 players and a maximum of 18 players. The provided list of Players is not a Final squad list and will only be utilised as a demonstration that the Club has sufficient Players to field that Team.
- d. Clubs which participate in Tier 1 are required to field each age group to be eligible to participate. If a Club is unable to field an age grade, they will be relegated to the next lowest Tier.

- e. Clubs which participate in the Tier 2, or the Youth Girls Tier 1, and below may seek a one (1) aged Team exemption for one (1) season only. If a Club is unable to field any aged Team in the YCC for a second consecutive year, they will not be permitted to participate in the YCC for that Season.
- f. Football SA Academy Teams may also be included into the Competition structure at the discretion of Football SA.
- g. The promotion and relegation of Clubs from season to season will be at the discretion of Football SA. Where possible, 2 Clubs will be promoted, and 2 Clubs will be relegated.
- h. Football SA will declare all leagues following the Club nomination period prior to each Season.

4.16.2. Youth State League

- a. The formulation of all YSL divisions is at the sole and absolute discretion of the Football SA.
- b. Football SA may utilise grading to allocate Teams to leagues.

4.17. Promotion and Relegation

4.17.1. Number of Teams

- a. Football SA shall determine the manner and the number of Teams to be promoted and relegated for any season. Football SA shall determine the number of Teams to play in each Competition in any season.
- b. Where no determination is made by Football SA, two (2) Teams shall be promoted, and two (2) Teams shall be relegated. Football SA will have the sole and absolute determination on all decisions relating to the promotion and relegation of Teams.

4.17.2. Qualification

- a. When a Team or Teams are to be relegated, the Team or Teams which were lowest in the league table of that division in the previous season shall be relegated.
- b. When a Team or Teams are to be promoted, the Team or Teams which were highest in the next lowest League in the previous season shall be eligible for promotion to the next highest League subject to the provisions of Clause 4.2.
- c. Any promotion is subject to the Club fulfilling the minimum requirements of the Competition as prescribed by Football SA from time to time.

4.18. Match Sheets and Match Reports

4.18.1. Each Club shall submit a completed Match sheet in the format approved by Football SA. It is the responsibility of the Club to ensure the Match Sheet is completed in full and correctly.

4.18.2. The Match Sheet is to contain the correct names, the registration numbers and shirt numbers of the Club's Players taking part in the Match, the Club's nominated Substitutes for the Match and the names of the Club officials in the Technical Area and Ground Stewards.

4.18.3. The Match Sheet must be submitted in accordance with the directions provided by Football SA each season.

4.18.4. No Match is to commence prior to the Match Official sighting that Match Teams have been submitted and confirmed.

4.18.5. A Team will be deemed to have submitted an incomplete Match Sheet if they have not correctly provided the following details:

- a. Football Australia Registration Number for all Players;
- b. Shirt numbers for all Players;
- c. Players correct name;

- d. Starting Players and substitutes;
 - e. Team Officials;
 - f. Ground Stewards; and
 - g. Any other details specified by Football SA.
- 4.18.6.** If a situation occurs where a Club may need to make an amendment to a Match Sheet that has already been submitted and/or confirmed, a Club official may approach the Match Official prior to the commencement of the Match to make an amendment. Once the Match has commenced no amendments will be permitted to the Match Sheet.
- 4.18.7.** The applicable fine and/or penalty for a Club providing an incomplete Match Sheet or changing a Match Sheet is as prescribed in Appendix A (Schedule of Fines and Penalties).
- 4.18.8.** Where a Team participates in a Competition that permits Substitutions or Interchange, the Team must select starting Players and substitutes as required. These Players must be clearly identified in the relevant area of the Match Sheet as either starting or as a substitute. No additional Player can be selected as a starting Player or a Substitution.
- 4.18.9.** If a Player who is registered and eligible to participate in accordance with the FA National Registration Regulations is not listed on the Match Sheet prior to the Match and then participates in the Match, the applicable fine and/or penalty for a Club is as prescribed in Appendix A (Schedule of Fines and Penalties).
- 4.18.10.** At the completion of each Match, an Official from each competing Club shall attend the Match Official's room and shall:
- a. report any injuries to Players of their Club; and
 - b. ensure goal scorers and any cautions or send off of Players are correct;
- 4.18.11.** Players may not be entitled to accident insurance benefits if their injuries are not noted on the Match Sheet.
- 4.18.12.** The Match Official shall record and submit all Match information on the Competition Management System as directed by Football SA.
- 4.18.13.** Any related Match incident reports from Match Officials, or Clubs shall be submitted to Football SA within 24 hours of the completion of the Match. Sanctions may be imposed as determined by the Competition Administrator for late submission. The first offence will result in a warning, and the second offence will incur a penalty of 50% of the match fee.
- 4.18.14. Youth Competitions**
- a. Clubs may list up to 16 Players on a Youth State League (YSL) Match Sheet.
 - b. Clubs may map up to 16 Players on a Under 14, 15, 16 and 17 Youth Club Championship(YCC)/Youth Premier League Team (YPL) on Dribl which must include at least one (1) goalkeeper.
 - c. Clubs may list up to 17 Players on a Under 14, 15, 16 and 17 YCC/YPL Match Sheet providing at least one (1) listed Substitute is a goalkeeper. If no goalkeeper is listed as a Substitute, only 16 Players may be listed on a Match Sheet.
 - d. Clubs may list up to 14 players on a YSL Under 12 and Under 13 Match sheet.
 - e. Clubs may map up to 14 Players on a Under 12 and 13 YCC/YPL Team on Dribl which must include at least one (1) goalkeeper.
 - f. Clubs may list up to 15 Players on a Under 12 and 13 YCC/YPL Match Sheet providing at least one (1) listed Substitute is a goalkeeper. If no goalkeeper is listed as a Substitute, only 14 Players may be listed on a Match Sheet.
 - g. YCC Players can only be listed on a maximum of two (2) Match Sheets on any given day. Goalkeepers are exempt from this rule.
- 4.18.15.** If a Club disputes any of the post-Match statistics on Dribl, they must submit a dispute on Dribl with reasons. Any dispute must be submitted no later than 48 hours of the scheduled kick-off. Football SA will review all submitted disputes and make determination in its sole and absolute discretion.

4.19. Match Balls

- 4.19.1. Before the start of each Match in all Competitions, or any other Competition organised and sanctioned by Football SA unless otherwise specified, the Host Club shall present to the Match Official at least two (2) balls of a type and brand approved by the Football SA, 30 minutes prior to the commencement of the Match.
- 4.19.2. The Match Official shall select one (1) of the balls for use in the Match.
- 4.19.3. The Home Team shall keep the other Match ball/s presented to the Match Official prior to the Match at the Substitute bench and shall supply it to the Match Official immediately upon request.
- 4.19.4. All Senior Elite Competition Matches shall have a minimum of 3 Match balls available. For Senior Elite Matches at a venue with no fence, there must be minimum of 5 match balls around the Field of Play.
- 4.19.5. All Clubs must use the Match ball type and brand as stipulated by Football SA on an annual basis.
- 4.19.6. The applicable fine and/or penalty for a Club in breach of clause 4.19 is as prescribed in Appendix A (Schedule of Fines and Penalties).
- 4.19.7. Match ball sizes:

Age group	Ball size
Under 6-7	3
Under 8-9	3
Under 10-13	4
Under 14 and above	5

4.20. Team Names

- 4.20.1. Each Club shall register its Team Name and logo with Football SA.
- 4.20.2. No Club shall register or use any Team Name or logo which has not been approved by Football SA.
- 4.20.3. All teams of a Club shall use and be known by the Club's registered Team Name.
- 4.20.4. The Team Name and logo must be in accordance with the Football Australia National Club Identity Policy.
- 4.20.5. Any Club which in the opinion of Football SA has a Team Name or logo which does not comply with the preceding Sub-Clause shall change its Team Name or logo within two (2) calendar months of being requested to do so by Football SA.
- 4.20.6. Any Club that does not adhere to sub-clause 1-5 will be prohibited from participating until they are compliant.

4.21. Club Colours and Playing Strip

- 4.21.1. All Clubs must submit their playing strip for the season by a date stipulated by Football SA each year. Clubs must not wear a playing strip in a Match unless such playing strip has been approved by Football SA.
- 4.21.2. Each Club shall register its colours, logo and the design of its first choice playing strip and its alternative playing strip with Football SA including a photograph of each of the full playing strips.
- 4.21.3. The alternative playing strip shall be of a different colour to the home Team playing strip, to avoid a clash between the home and visiting Teams. A Club's alternative playing strip must include a change of colour for shirts, shorts and socks. Where possible the Club should have one light coloured strip and one dark coloured strip. If a Club intends to have a third playing strip, this must be registered with Football SA.
- 4.21.4. The registration of Club playing strips shall be subject to the prior approval of the Football SA.
- 4.21.5. Priority of registration shall determine the exclusive right to wear the playing strip.
- 4.21.6. Any Club intending to make changes to its playing strips including the colours or design shall apply to Football SA giving full details of the proposed new strips or alterations.
- 4.21.7. Football SA shall refuse its approval if in the opinion of the Competition Administrator the proposed new, or changed, playing strip is not sufficiently different from that of any other Club.
- 4.21.8. Playing strips must be numbered on the back of the shirt with each shirt displaying a different number. As a guide each number should be 25cm to 35cm in height and 3cm to 5cm in thickness.
- 4.21.9. **Logo and Sponsors**

- a. If required by Football SA, Clubs playing in any Competition shall wear on their playing strips the name, logo, emblem or other mark of any sponsor of Football SA or the Competition.
- b. The logo of Football SA is to be placed on the playing shirt of all Teams that compete in Football SA Competitions. The logo is to be placed on the shirt in accordance with the relevant Regulations. Where the Regulations do not specify, the Football SA logo is to be placed on the breast of the shirt or the left sleeve and is to be 60mm x 60mm in size.
- c. The only logos to appear on the playing shirts of the Players, including the goalkeeper shirt, are to be the Football SA logo, Club logo and Competition and/or sponsor logos as outlined by Football SA.
- d. Any sponsorship logos placed on Youth playing strips must be age appropriate. For example, logos which are advertising gambling or alcohol are not permitted.

4.21.10. Goalkeepers

- a. The goalkeeper's shirts or uniforms must be clearly distinguishable from, and not contain any of the basic colours of, the playing shirt of the other Players of their Team or the opposing Team.
- b. The goalkeeper may wear shorts and socks of the same colour and design as their own Team.

4.21.11. Clubs which are not playing at their Home Venue shall take their first choice and their alternative playing strips to the Venue where the Match will be played.

4.21.12. If, in the opinion of the Match Official of any Match, the uniforms of the Teams or goalkeepers taking part are not sufficiently different, the Match Official shall direct the Away Team, or the goalkeeper of the Away Team, to change to the nominated alternative playing strip or to make such other change as the Match Official deem appropriate for the Match.

4.21.13. Football SA may provide playing kit guidelines prior to the commencement of the Season. In the event of inconsistency between these Regulations and the playing kit guidelines, the playing kit guidelines will prevail.

4.21.14. The applicable fine and/or penalty for a Club in breach of clause (4.21 (1) – (5)) is as prescribed in Appendix A (Schedule of Fines and Penalties).

4.21.15. The applicable fine and/ or penalty for a Club in breach of clause 4.21 which results in a Competition Matches not proceeding due to an inability to resolve a clash of strips is as prescribed in Appendix A (Schedule of Fines and Penalties).

4.21.16. If the Match is Postponed due to a colour clash, a Forfeit will be imposed on the Away Team and a Forfeit fine will be imposed in accordance with Appendix A (Schedule of Fines and Penalties).

4.22. Unauthorised Matches and Tours

4.22.1. Prior to participating in any Match outside of the scheduled Football SA Matches, the Club must obtain written permission from Football SA.

4.22.2. Women's Community and Youth Clubs, including MiniRoos Competitions are not to commence Trials until after the Season concludes, as advised by Football SA. All Senior Elite Competition Trials will be at the discretion of Football SA.

4.22.3. No Club, Team or Player from any Club, shall take part in any pre-season Trials or practice Match against another Club unless:

- a. all Players taking part in the Match are registered with the Club for which they play or are on trial with that Club;
- b. the Match is played under and in accordance with the Laws of the Game and Football SA Rules, and Regulations as well as related policy guidelines. Where possible, the Match is also to be played under the control of a registered Match Official; and
- c. each Club taking part in the Match prepares a detailed Match Sheet and submits it to the Match Official, where applicable at least 30 minutes prior to kick off. The Match Sheets are to be submitted to Football SA by the Club or Match Official within 48 hours of the end of the Match.

- 4.22.4. If a Club, Team, Player or Official participates in an unauthorised Match or in any Match which contravenes sub-Clause (1) or (2), the Club or individual shall be liable to such penalty as determined by Football SA or appointed committee.
- 4.22.5. Contravention of sub-Clause (1) or (2) means that the Club, Team, Player or Official shall not be covered by insurance benefits provided through Football SA.
- 4.22.6. The applicable fine and/or penalty for a Club in breach of clause 4.22 is as prescribed in Appendix A (Schedule of Fines and Penalties).

4.23. League Points

- 4.23.1. Subject to sub-Clause (2), in Competitions conducted on a league points basis, the number of points awarded to the Teams shall be:
 - a. for a win - three (3) points;
 - b. for a draw - one (1) point; and
 - c. for a loss - nil (0) points.
- 4.23.2. Football SA may provide in the rules, Regulation or related policies and guidelines for any Competition, the manner in which points will be awarded in the Competition.
- 4.23.3. Where two (2) or more Teams have the same number of points, the standings of the Teams will be determined by Goal Difference, the Team with the better Goal Difference shall hold the higher position.

4.24. Youth Club Championship Table

- 4.24.1. The YCC Table will be an accumulation of points of Youth Teams within the Competition (Under 13 to Under 16). Teams will receive three (3) points for a win, one (1) point for a draw and zero (0) points for a loss.
- 4.24.2. Bonus and deduction points will be incorporated into the YCC Table. Bonuses and deductions are available at Appendix G of these Regulations.

4.25. Goal difference

- 4.25.1. Where two (2) or more Teams have the same number of points, the Team with the better Goal Difference shall be deemed to hold the higher position, as follows:
 - a. the Team with the higher positive Goal Difference shall be deemed to have the better Goal Difference;
 - b. the Team with a positive Goal Difference shall be deemed to have a better Goal Difference than a Team with a negative Goal Difference;
 - c. the Team with the lower negative Goal Difference shall be deemed to have the better Goal Difference; and
 - d. where Goal Differences are the same, the Team which scored the greater number of goals shall be deemed to have the better Goal Difference.
 - e. The Team that has gained more points from the other Team during the season, will be deemed to hold a higher position (Head to Head results).
 - f. Where Teams cannot be separated through the implementation of (i) through to (v), Football SA may direct the Teams to play off on a neutral Venue to decide which of the Teams will be placed in the higher position. Where a playoff Match is required, Football SA will schedule the Match within 7 days, where practical.
- 4.25.2. A rule relating to Goal Difference will apply to all Youth Competitions. This rule applies to any results with a Goal Difference greater than eight (8). These results will be amended so that the Goal Difference is equal to eight (8). Example: If the score line is 15 nil, it will be recorded as an 8-0 result. If the score line is 16-2, it will be recorded as a 10-2 result.

4.26. Players Injury and Concussion Guidelines

- 4.26.1.** If a Player on the Field of Play is bleeding or has blood on their body or clothing, the Match Official shall order the Player to leave the Field of Play until the bleeding has stopped and any blood on the Player's body or clothing has been removed. The Player must be provided with a clean playing shirt free of blood prior to returning to the Field of Play.
- 4.26.2.** Football Australia Concussion Guidelines have been developed to provide guiding principles in relation to the management of concussion and return to play. The guidelines are of a general nature, individual treatment will depend on the facts and circumstances of the individual.

4.27. Casual Vacancies in Competitions

- 4.27.1.** Football SA may fill any casual vacancy in any Competition at its discretion. Where a Team is coming from an Affiliated Association, Football SA will undertake a consultation process with the Affiliated Association.

4.28. Annual returns

- 4.28.1.** Football SA shall require Clubs and Affiliated Associations to submit reports in accordance with the Competition entry requirements. For further information please refer to the relevant Regulations.

4.29. Prize Money

- 4.29.1.** Football SA may allocate prize money for League, Cup and other Competitions as determined on an annual basis as outlined in Appendix F.
- 4.29.2.** Football SA shall announce the amount of the prize money for League, Cup and other Competitions before the commencement of the Competition.
- 4.29.3.** Prize money shall be presented where possible within two (2) months of the conclusion of the Competition for which it is awarded, subject to the Club not having any outstanding debt with Football SA.
- 4.29.4.** Prize money will be allocated against that Clubs debts, if any, in the first instance.

5. ELIGIBILITY

5.1. Status of Players

- 5.1.1.** As per the Football Australia National Registration Regulations:
- a. A Player participating in football is either an Amateur or a Professional.
 - b. A Professional is a Player that has a written contract with a Club, on prescribed forms NRR04 and NRR05.
 - c. An Amateur Player is any Player that is not a Professional, as defined in article 3.1. of the National Registration Regulations.
 - d. A Player may only be registered with one Club at any one time in line with the Football Australia National Registration Regulations (NRR) and FIFA. Football SA has discretion to permit Players to play in multiple Clubs that do not compete in the same Competition.

5.2. Registration of Players

- 5.2.1.** All players including Amateur, Professional, Youth, MiniRoos, Futsal and Players who participate in Football conducted by Football SA, or any Club or Affiliated Association must be registered through the National Registration System.
- 5.2.2.** It is the responsibility of the Club to ensure that a Player is registered prior to them being played.
- 5.2.3.** No Player shall play for more than one Club in any Competition, except where a Player Registration is transferred in accordance with National Registration Regulations.
- 5.2.4.** Football SA will provide to Clubs, on an annual basis, the dates that Players can be registered. All Players must be registered each season in accordance with the process notified by Football SA on an annual basis.
- 5.2.5.** Players that participate in a Professional Competition, a Competition where there is at least one registered Professional Player, can only be registered during 1 of 2 windows. These windows will be provided to Clubs on annual basis.
- 5.2.6.** The Registration of a Player participating in an Amateur Competition, that being a Competition where there are no registered Professional Players, shall be permitted up to the 30 June of each season. Exceptions apply for Senior Men's Competitions, where the registration period may vary annually based on the FA registration window, the inclusion of new Players, or specific approvals granted by Football SA.
- 5.2.7.** A player that registers to the Reserve Grade Competition outside of the Senior Grade Registration Windows, will not be considered for promotion to the Senior Grade Team if they are considered to be a Senior Grade Player.
- 5.2.8.** A Senior Grade Player may register and play for a Reserve Team with another Club but is not permitted to play with the Senior Grade Team unless an exemption has been requested by the Club and approved by Football SA and/or Football Australia.
- 5.2.9.** A request to register a Player outside of the Registration Windows for Professional Competitions and after the 30 June for Amateur Competitions may be submitted to Football SA for consideration in accordance with Clause 4.7 of the National Registration Regulations. Any decision is at the sole discretion of Football SA and/or Football Australia.
- 5.2.10.** This rule applies to Amateur Players that have been registered with a Club at any point during the Season. Amateur Players that have not been registered during the Season can register with a Club at any point of the Season.
- 5.2.11.** For further information on registration of Players refer to the National Registration Regulations.
- 5.2.12. Youth Requirements:**
- a. A Player may register to play with an affiliated Youth association Team and a Football SA Club.
 - b. Players must be mapped to an age eligible YCC Team or YPL/YSL Team to participate in the YCC or YPL/YSL, respectively.
 - c. Football SA will notify Clubs ahead of each season the mapping windows whereby Clubs can amend their squads. Players must be mapped in the prescribed window as notified by Football SA, to participate in the YCC, YPL or YSL.

- d. A Youth Player must be registered in accordance with these Regulations prior to participating in any Match in a sanctioned Football SA Competition. For the avoidance of doubt, a Player may register at any time leading up to the first competitive Match of the season that the Player participates in.
- e. Players are not permitted to participate for more than one (1) Club in the YCC in any given Season unless an exemption is requested and granted by Football SA in its sole and absolute discretion.

5.3. Registration Procedure

- 5.3.1.** Football SA participating Clubs and Affiliated Associations shall abide by the Football Australia National Registration Regulations and related Football Australia statutes.
- 5.3.2.** All Players must be registered through the National Registration System to be eligible to play within the Competitions. Football SA will provide to all Clubs, on an annual basis, the registration process that is to be undertaken to register a Player. This process will be undertaken in accordance with the National Registration Regulations.
- 5.3.3.** If a Player is registering for the first time with a Club, the Player must provide the Club with evidence of the Player's name and age, by producing an original birth certificate, passport, driver's licence or any other appropriate official identification. It is the responsibility of the Club to ensure the information provided in the Players registration are true and correct.
- 5.3.4.** The FIFA Regulations on the Status and Transfer of Players (RSTP) provide that Football Australia must set two (2) registration periods for the Registration of all Players participating in Professional Competitions within its jurisdiction.
- 5.3.5.** All Players registering in a Professional Competition, must be registered during one (1) of the two (2) Registration periods set by Football Australia. This ruling applies regardless of whether the Player is an Amateur or Professional Player.
- 5.3.6.** Football Australia is permitted to have separate Registration Periods for males and females i.e., two (2) for male Competitions and two (2) for female Competitions.
- 5.3.7.** Football SA will notify all Clubs of the Registration periods set by Football Australia for each Competition on an annual basis.
- 5.3.8.** Players in an Amateur Competition will be permitted to be registered during the dates as communicated by Football SA on an annual basis.
- 5.3.9.** Players shall not register with a new Club unless their financial obligations with their previous Clubs have been met. Clubs which determine that a Player has outstanding fees must provide written notification to Football SA. The procedure of providing this information will be provided to Clubs on an annual basis.

5.4. Registration of A-League Women and Football SA Academy Players

- 5.4.1.** A Club is eligible to register a maximum of three (3) A-League Women Players.
- 5.4.2.** A Club is eligible to register a maximum of three (3) Football SA Academy Players
- 5.4.3.** If a Player is both a Football SA Academy Player and an A-League Women Player, the Player will be defined as a A-League Women Player.
- 5.4.4.** Goalkeepers that are contracted to a A-League Women Club or Football SA Academy are exempt from the above ruling.
- 5.4.5.** The Football SA Academy Team is exempt from this rule.

5.5. Register of Clubs

- 5.5.1.** Football SA shall keep and maintain a register of Clubs and Affiliated Associations.

5.6. Eligibility of Players

- 5.6.1.** Players who are aged up to 18, or who turn 18 in the year of Competition, are eligible to play in the Under 18. There is no provision to allow overage Players in the Youth Competition.

- 5.6.2. Any Club who breaches this rule shall be subject to the sanctions as per the unregistered, suspended and Ineligible Player rule at clause 5.20.
- 5.6.3. It should be noted that where Clubs have Teams participating on the same round it may call for Players to play in a higher grade. However, once a Player has played in that higher grade on that round, the Player shall become ineligible to play in a lower grade for their Club in the same round of Matches (including the Final Series) unless Clause 5.6.4 is satisfied. This applies even where the same round of Matches is played on different weekends. It must be noted that the Senior Competition is classified as a separate Competition to that of the Youth Competition and consequently this rule will not apply to the movement of Youth Players.
- 5.6.4. Where a Player has come on as a substitute, the Player is permitted to play in a lower grade Team in the same round if the Player is recorded on the Match Sheet as having entered the Field of Play from 75 minutes or later.
- 5.6.5. Where a Player is below the age of fourteen (14), they may be permitted to participate in a Senior Competition subject to written approval from Football SA to a request from that Player's parent or guardian.
- 5.6.6. Goalkeepers are exempt from clause 3 and 4 on the provision they are listed and play as a goalkeeper only.
- 5.6.7. Where a Player moves from one Club to another and participates in the same Competition, the Player is not permitted to play in a round that they had played in for their previous Club.
- 5.6.8. A Club is not permitted to recruit more than five (5) Players from another Team in the Youth Competition, MiniRoos or Community Women's.
- 5.6.9. If a Club has recruited more than five (5) Players from another Team, they must demonstrate that there are exceptional circumstances for the Football SA to consider.
- 5.6.10. All decisions on Final placement of Teams will be at the discretion of the Football SA.

5.7. Youth Eligibility of Players

- 5.7.1. Youth Players who are Amateurs shall be registered each year in line with the Football SA Registration process.
- 5.7.2. The Registration of Youth Players who are Amateurs expires at midnight on the day of their last competitive Match.
- 5.7.3. No Player under the statutory school leaving age may sign a Professional Player's contract (Refer to Football Australia National Registration Regulations).
- 5.7.4. The following age eligibility shall apply for Youth and MiniRoos Competitions, using the calendar year (1st January - 31st December each year):

Age group	Eligibility
Under 17	Players who turn 17 in the year of Competition
Under 16	Players who turn 16 in the year of Competition
Under 15	Players who turn 15 in the year of Competition
Under 14	Players who turn 14 in the year of Competition
Under 13	Players who turn 13 in the year of Competition
Under 12	Players who turn 12 in the year of Competition
Under 11	Players who turn 11 in the year of Competition
Under 10	Players who turn 10 in the year of Competition
Under 9	Players who turn 9 in the year of Competition
Under 8	Players who turn 8 in the year of Competition
Under 7	Players who turn 7 in the year of Competition
Under 6	Players who turn 6 in the year of Competition

- 5.7.5. A maximum age for all youth divisions has been set. A Player who exceeds the maximum age may only be considered for an exemption to the maximum age based on medical grounds. This may also include Players with a learning difficulty. To be eligible for consideration, the Club must complete 'Application for a Player

to Play Down an Age Group'. This application must also include a letter from a qualified medical practitioner. The decision to grant an age exemption will be at the discretion of Football SA based on the application. Further, a Club may seek an exemption in accordance with Rule 5.8 and 5.9 of these Operating Regulations.

- 5.7.6.** A Club may request an exemption for a Player which exceeds the maximum age limit based on geographic location of the Club and restricted and limited access to other Clubs.
- 5.7.7.** A minimum age to participate in each age group has not been set. The Club and parent or carer are responsible for ensuring that the Player is played according to their capabilities. Football SA may request supporting documentation.
- 5.7.8.** A Participant is eligible to register to play in the Under 6 age group if the Participant turns five (5) years of age during the season.
- 5.7.9.** Football SA Girls Academy Teams may play in Youth Club Championship and are exempt from the age eligibility rule.

5.8. Biological Maturation Testing

- 5.8.1.** The Biological Maturation principle allows for Youth Players that are classified as late developers to offset any physical disadvantage in relation to Players of typical or early maturation by playing down one age group.
- 5.8.2.** Biological Maturation approval will be provided by Football SA to a Player who has undergone a Peak Height Velocity (PHV) assessment and has been assessed as a late developer:
 - a. For Boys, an on-time maturer is someone who goes through PHV between 13.5 to 14.5 years of age. If a Player is assessed as having gone through PHV before 13.5 years of age, they will be deemed an early maturer (relative to the normal population) and will be required to play in their age group. If a Player is assessed as expected to go through PHV after 14.5 years of age, they will be deemed a late developer and will be entitled to play down one age group.
 - b. For Girls, an on-time maturer is someone who goes through PHV between 11.5 to 12.5 years of age. If a Player is assessed as having gone through PHV before 11.5 years of age, they will be deemed an early maturer (relative to the normal population) and will be required to play in their age group. If the Player is assessed as expected to go through PHV after 12.5 years of age, they will be deemed a late developer and will be entitled to play down one age group.
- 5.8.3.** Football SA will provide the PHV assessment form required to be completed. Football SA may from time to time schedule a PHV assessment date where Players can attend to complete an assessment. Football SA will communicate the assessment process ahead of the following Season.
- 5.8.4.** The age groups for which the Biological Maturation principle will apply for the Season are as follows:
 - a. Boys': Youth Club Championship, Youth State League (Under 13, Under 14 and Under 15 only);
 - b. Girls': Youth Girls Club Championship, Girls Youth State League (Under 14 and Under 15 only).

5.9. Relative Age Effect

- 5.9.1.** Relative Age Effect (RAE) will remain in the U9 to U12 Boys' age groups and U10 to U13 Girls' age groups of Football SA Competitions only.
- 5.9.2.** RAE consideration will be provided to Players who have height and weight results, when assessed, below the 50th percentile as listed in the table below.
- 5.9.3.** Clubs must request for RAE assessment by Football SA for any Player who is seeking RAE status. Players will be required to submit a RAE assessment completed by a medical practitioner with any assessment request.
- 5.9.4.** Registration as a RAE Player is only possible if Football SA has granted RAE status to a Player following Football SA's assessment processes.
- 5.9.5.** Football SA will communicate the process for RAE assessment prior to the annual trial period.

Age Group	Height (cm) – 50th percentile		Weight (kg) – 50th percentile	
	Male	Female	Male	Female
9 years	Less than 136.7	N/A	Less than 33	N/A
10 years	Less than 142.5	Less than 144.5	Less than 38	Less than 39
11 years	Less than 149.3	Less than 150.7	Less than 42.4	Less than 43.3
12 years	Less than 153.4	Less than 156.7	Less than 49.2	Less than 51.4
13 years	N/A	Less than 159.5	N/A	Less than 52.3

5.10. Visa Players

- 5.10.1.** A maximum of three (3) Visa Players are permitted to be on the First Team’s Match Sheet in the Men’s NPL, Women’s NPL, Men’s State League 1 and Men’s State League 2. One (1) Player must be considered an AFC/OFC Player as pursuant to the Appendix B and C (FA Player Points System).
- 5.10.2.** As per the FA Player Points System Regulation a goalkeeper cannot be a Visa Player.
- 5.10.3.** Unlimited number of Visa Players are permitted in all other Competitions who meet the Visa requirements to be in Australia and the requirements of the Competition.
- 5.10.4.** Refer to National Registration Regulations for further details here.

5.11. Substitution and Interchange of Players

- 5.11.1.** A Team may only use players that are selected as Playing or as a Substitute on the Match sheet in a Match.
- 5.11.2.** Substitutions will be used in the Men’s NPL, State League 1, Stage League 2 (First Team) and Reserves, as well as Women’s NPL, Women’s State League (First Team).
- 5.11.3.** Where Substitutions are used, a Team can name up to six (6) Substitutes on their Match Sheets. Of the 6 Substitutes, a Team may only use a maximum of five (5) out of the 6 named in the Match, unless otherwise specified for a particular Competition.
- 5.11.4.** Where a Match goes into extra time, the Team may use an additional Substitute from their allocation of five.
- 5.11.5.** Interchange will be used in all other Competitions, including Women’s NPL and State League Reserves and the NPL, State League 1 and State League 2 Under 18s Competitions.
- 5.11.6.** The Match Official must acknowledge all Substitutes and Interchanges.
- 5.11.7.** Where Substitution rules apply, the Player is deemed to have played if they have entered the Field of Play as a Substitute. Where Interchange applies, if the Player is named on the Match sheet it will be deemed that they have participated in the Match.
- 5.11.8.** In Matches where there is a potential for extra-time to be played and where Substitutions are used, the Team may name seven (7) Substitutes and can use five (5) up to the end of normal time. If the Match goes into extra-time, each Team is permitted to use an extra substitute. For clarification purposes, a Team can use a maximum of five (5) Substitutes up to the end of normal time. Once the Match goes into extra-time, a sixth Substitute may be used.
- 5.11.9.** For clarity, the maximum number of persons in a Technical Area for all Senior Elite Competitions are listed below:
 - a. Seniors: 6 Substitutes, 7 Team officials
 - b. Reserves: 6 Substitutes, 5 Team officials
 - c. Under 18: 5 Substitutes, 5 Team officials

- 5.11.10.** To reduce disruption to the Match, each Team will have a maximum of three (3) opportunities to make Substitutions during the Match; Substitutions may also be made at half-time and are not considered a used opportunity.
- 5.11.11.** If both Teams make a Substitution at the same time, this will count as one (1) of the three (3) opportunities for each team.
- 5.11.12.** Unused Substitutions and opportunities are carried forward into extra time.
- 5.11.13.** Where Competition rules allow an additional Substitution in extra time, Teams will each have one (1) additional Substitution opportunity; Substitutions may also be made before the start of extra time and at half-time in extra time.
- 5.11.14.** All MiniRoos and Youth Competitions shall permit the Interchange of Players in all age groups including the Under 17 Age Group.
- 5.11.15.** A Player nominated as an Interchange Player shall be subject to the authority and jurisdiction of the Match Official whether called upon to play or not.
- 5.11.16.** In Matches where Interchange is permitted, the following procedure shall apply:
- a. An interchange may only be made in the “interchange zone” which shall be on 1 side of the Field of Play, extending for 1 metre on either side of the halfway line.
 - b. A Team shall only use an interchange player who is named on the Match sheet.
 - c. An interchange shall only be made when the ball is out of play, or at a stoppage of play and is permitted by the Match Official.
 - d. When making an interchange, the following conditions shall be observed:
 - i. the player leaving the field shall do so by crossing over the interchange zone.
 - ii. the interchange player shall not enter the field until the player leaving the field has passed completely over the interchange zone.
 - iii. the interchange player shall enter the field by crossing over the interchange zone, and
 - iv. the interchange is complete when one player has come off and another player has come on.
- 5.11.17.** The number of Interchanges that may be made during a Match is unlimited, a Player who has been replaced may return to the field by being Interchanged for another Player.
- 5.11.18.** The Match Official shall caution any Player who:
- a. enters the Field of Play as an Interchange Player before the Player being replaced has completely left the field; and
 - b. leaves or enters the field from a place other than the interchange zone if not directed by the Match official.
- 5.11.19.** The applicable fine and/or penalty for a Club in breach of clause 5.11 is as prescribed in Appendix A (Schedule of Fines and Penalties).

5.12. Guest Players

- 5.12.1.** A community women’s Team may register a Player as a guest Player if:
- a. The Player has not previously been registered with a girl’s and/or women’s Club; or
 - b. The Player has not been registered with a girl’s and/or women’s Club in the previous season.
- 5.12.2.** A YSL Girls team may register a Player as a guest Player if:
- a. The Player has not previously been registered with a girl’s and/or women’s Club;
 - b. the Player has not been registered with a girl’s and/or women’s Club in the previous season; and
 - c. the Player is not registered for an Under 12 or Under 17 YPL girls Team, any Under 12 to Under 17s Team in YSL or MiniRoos girls Team.
- 5.12.3.** A guest Player can play a maximum of three (3) Matches. If the Player is named on the Match sheet it will be deemed that they have participated in the Match.
- 5.12.4.** Once the Player has played three (3) Matches the Player must become a registered Player to continue to play for any Club.

5.12.5. If the Player does not register at the conclusion of their guest Player period, the Club will be charged the guest Player fee per Player as outlined by Football SA.

5.12.6. Guest Player Fee - \$40

5.13. Player Rosters

5.13.1. All Clubs involved in the NPL and WNPL, except for Adelaide United FC, are required to abide by the Player Points System as outlined in Appendix C and Appendix D, respectively.

5.13.2. All Clubs that participate in the Men's State League 1 and State League 2 are required to provide to Football SA a Player Roster of their First Team in a format outlined in Appendix F.

5.13.3. All Players that participate in the Men's NPL, Mens State League 1, Men's State League 2 and Women's NPL First Team Matches must be listed on the Club's current PPS or First Team roster or be exempt as per eligibility criteria outlined in each Appendix.

5.14. Player Remuneration

5.14.1. Any remuneration paid to a Player must be in accordance with the National Registration Regulations for Amateur and Professional Players.

- a. An Amateur Player is a Player that is not paid to play football. The Player may be reimbursed for expenses incurred for playing football.
- b. A Professional Player is a Player paid to play football. A Professional Player Contract, NRR05, must be completed by both the Club and the Player in accordance with the National Registration Regulations and no other agreement between the two parties is to exist.
- c. A Club that participates in the Senior Elite Competitions may reimburse an Amateur Player up to a maximum of \$200.00 per week for a maximum of 40 weeks in a calendar year. A Player that is paid more than this amount must be placed on a Professional Player Contract or the onus is on the Club to satisfy the Competition Administrator that the amount paid accurately reflects expenses incurred by the Player.

5.14.2. Each Club shall keep proper books and records of all remuneration paid to its Players and shall make the books and records available for inspection upon request by Football SA.

5.14.3. Football SA may at its sole discretion undertake to audit a Club. The Club/s nominated will be required to follow the requirements of the audit:

- a. Any audit conducted on a Club shall be undertaken by an accountant who is a registered company auditor or by a member of the Australian Society of Certified Practising Accountants or the Institute of Chartered Accountants in Australia.
- b. In this clause, "remuneration" includes:
 - i. signing-on fees; salaries; wages; superannuation and other money paid by a Club to its
 - ii. Player;
 - iii. the amount or value of any gift, prize or award given or made by the Club to its Players.
 - iv. the value of any other benefit provided or given by a Club to its Players (including, for
 - v. example, the provision of accommodation or the use of a motor vehicle at no charge or less than a fair market rent or charge), and
 - vi. any such payment made, or benefit provided, by the Club to any person who is related to, or resides with, any of its Players but does not include the reimbursement to the Player of expenses actually incurred by the Player, or the payment by the Club of expenses actually incurred by it, for:
 - A) the Player's travel and accommodation necessarily incurred through the Player's participation in a Match, or
 - B) the Player's equipment, training and insurance.

- 5.14.4.** In accordance with the National Regulations, the applicable fine and/or penalty for a Club in breach of this clause is prescribed at 'unregistered, ineligible or suspended player' in Appendix A (Schedule of Fines and Penalties).

5.15. Adelaide United Youth Team

- 5.15.1.** Where an Adelaide United Youth Team (AUFC) participates in the Senior Men's Competition the following requirements will be applied:
- a. AUFC will be required to field a Senior and Reserve Squad in the Football SA Competition.
 - b. AUFC is permitted to name a maximum of 36 Players based on the following criteria. The Player must be:
 - i. Aged 20 years of age or under as of the 31 December of that year.
 - ii. An Australian Player as defined by the A-League (AL) and National Youth League (NYL) Player Contract Regulations, specifically Clause 5.10 for both Amateur and Contracted NYL Players and AL Players; and
 - iii. AL Players, Contracted NYL Players, or Amateur NYL Players.
- 5.15.2.** In addition to the 36 Players outlined in sub-clause ii, AUFC may seek approval from Football SA, in its sole and absolute discretion, to register up to six (6) Players to their senior NPL Player Roster who are older than the eligible youth age bracket prescribed at sub-clause (1)(i)(A) where the following criteria are satisfied in respect of that Player:
- a. The Player must be an Australian Player as defined by A-League contract Regulations and
 - b. The Player must be aged between 21 and 23 years of age as of 31 December of that year.
 - c. The Player must have appeared in the starting eleven (11) in no more than ten (10) Matches during the most recent A-League season for any A-League Club; and
 - d. The Player is currently Professionally Contracted to the A-League Club.
- 5.15.3.** Of the six (6) overage Players, only three (3) overage Players may be listed on a Match Sheet on any given round for the First Team.
- 5.15.4.** Overage Players are not permitted to participate in the Reserve Grade.
- 5.15.5.** Goalkeepers up to the age of 23 will not be considered as an overage Player.
- 5.15.6.** Adelaide United will be required to name and submit their Player roster to Football SA on an annual basis by the date specified by Football SA.
- 5.15.7.** In addition to the Players named on the Players Roster, Adelaide United are permitted to use the Players that are registered in the Football SA Academy Team to play in their Reserve or First Team. The Football SA Academy Players and eligible Adelaide United FC Players will be dual registered with both the Football SA Academy and Adelaide United. Free movement of Players between the Adelaide United Teams and Football SA Academy Team will be permitted, if age eligible.
- 5.15.8.** AUFC may request, in writing, an alteration to their submitted roster, based on injury or other exceptional circumstances. Any decision is at the sole and absolute discretion of the Football SA.
- 5.15.9.** All Players must be registered in the National Registration System in accordance with these Regulations.
- 5.15.10.** If the AUFC Youth Team is crowned League Premiers, the Team is not eligible to represent South Australia in the Football Australia National Premier League Finals Series. The qualifier will be the second placed Team.
- 5.15.11.** AUFC Youth Team is eligible to participate in a Final Series that is conducted by Football SA in the Competition in accordance with rule 7.4.6 of these Regulations.
- 5.15.12.** AUFC Youth Team is eligible to be promoted and/or relegated from any Competition in which it participates.
- 5.15.13.** AUFC will not be eligible to receive prize money.
- 5.15.14.** If a Player is played that does not meet the above criteria, the Club will be deemed to have played an ineligible Player and will be in breach of Clause 5.20 and will incur a penalty in accordance with Appendix A (Schedule of Fines and Penalties).

5.16. National and State Representative Teams

- 5.16.1.** Clubs shall release Players selected to play in representative Teams of Football Australia, Football SA or the State Federation for the State for which the Player is eligible to play.
- 5.16.2.** The Player shall be released for a period that includes travelling time and time for training as set down by the body which selects the Player.
- 5.16.3.** This Clause applies to all representative Teams of Football Australia and Football SA.
- 5.16.4.** If three (3) or more Players from any Club Team are selected to play in a representative Team, any Match arranged for the Club Team during the period that the Players are released under this Clause may be Postponed until such time as Football SA may determine.
- 5.16.5.** To request a postponement of a Match under Clause 5.16.4, a Club must submit the request in writing to the Competition administrator at least 14 days prior to the Match.
- 5.16.6.** A Club which releases a Player under this Clause shall not be entitled to any financial or other compensation for the release of that Player.
- 5.16.7.** The body which selects a Player shall:
 - a. notify Football SA, if it is a body outside of Football SA;
 - b. notify the Player and their Club in writing of the selection of the Player not less than 14 days before the date of the Match for which the Player is selected; and
 - c. ensure that the Player is covered by accident insurance during the entire period of their release including insurance against injury sustained in training or in the Matches.
- 5.16.8.** Players selected to play in representative Teams shall not fail or refuse to play in the Matches for which they are selected.
- 5.16.9.** A Player who is unable to play due to injury or illness shall, if so required by the body which selected him or her, undergo a medical examination by a medical practitioner nominated by that body.
- 5.16.10.** A Player who is selected to play in a representative Team shall not be eligible to play for their Club during the period for which he or she is, or should be, released under this Clause. If the Player fails, refuses or is unable to play in the Match for any reasons whatsoever, the Player is not eligible to play with their Club during the five (5) days immediately after the end of that period.
- 5.16.11.** A Club which plays a Player who is not eligible to play for it under this Clause shall be deemed to have played an unregistered Player.
- 5.16.12.** Any Club which does not comply with this Clause shall be sanctioned as determined by Football SA or an appointed committee.

5.17. Football SA Academy

- 5.17.1.** The Football SA Academy squads shall be deemed as representative Teams for Registration purposes and may enter Team/s into the Competitions following written approval by the Competition Administrator. Players shall be registered in accordance with National Registration Regulations.
- 5.17.2.** The total number of Players that are permitted to be submitted from Under 13's up to and inclusive of any Under 18's team under clause 5.17.1 above shall not exceed 80 Players.
- 5.17.3.** Football SA Academy Players are not bound by the player movement rule under clause 5.18.

5.18. Movement of Players

- 5.18.1. Women's National Premier League and Women's State League**
 - a. It should be noted that where clubs have teams participating on the same round it may call for players to play in a higher grade. However, once a player has played in that higher grade on that round, the player shall become ineligible to play in a lower grade for their club in the same round of Matches (including the Final Series) unless 5.18.1 (b) is satisfied. This applies even where the same round of games is played on different weekends. It must be noted that the Senior Competition is classified as a separate competition to that of the Youth competition and consequently this rule will not apply to the movement of Youth players.

- b. Where a player has come on as a substitute, the player is permitted to play in a lower grade team in the same round if the player is recorded on the team sheet as having entered the Field of Play from 75 minutes or later.
- c. Goalkeepers are exempt from clause (a) and (b) on the provision they are listed and play as a goalkeeper only.
- d. Where a player moves from one club to another and participates in the same competition, the player is not permitted to play in a round that they had played in for their previous club. No Player under the age of 14 can play in the Reserves or Seniors without gaining an exemption from Football SA.

5.18.2. Community Women

- a. Any player that has participated in a first grade match in the WNPL or WSL is not eligible to participate in Women's Community.
- b. In all Open Age divisions, a maximum of four (4) Borrowed Players are permitted on any Match Sheet.
- c. Any Player who has participated in a WNPL or WSL Reserve Match may only move to Division 1 or 2 and is not permitted to play in Division 3 or lower.
- d. Any Player who has participated in nine (9) or more Matches in the current Season in any Senior Women's Competitions, including WNPL or WSL Reserve Matches, is precluded from playing in Community Women's Competitions.
- e. Goalkeepers are included as one of the four (4) borrowed Players.

5.18.3. Youth Club Championship

- a. Players may be borrowed from their mapped Team to an older age Team only within the YCC, Under 17 YPL or Senior Men's or Women's Competitions.
- b. Under 12 YPL Players may move up and participate in the YCC for their Club only. An Under 12 YPL Player is not permitted to be borrowed to a YSL Team.
- c. Goalkeepers are exempt from this Rule and may move within the YCC Competition and YPL in accordance with age eligibility.

5.18.4. Youth Premier/State League

- a. Players registered in YSL and YPL Competitions are permitted to move up and participate in Senior Competitions, subject to compliance with the competition's eligibility and registration criteria.
- b. In the Under 14, 15, 16, 17 YSL and 17 YPL no more than six (6) Borrowed Players can be listed on a Match sheet at any given time in accordance with age eligibility.
- c. In the Under 12 YPL/YSL and 13 YSL no more than five (5) Borrowed Players can be listed on a Match sheet at any given time in accordance with age eligibility.
- d. Age eligible Players which are mapped to an Under 18 Competition and above, are only eligible to participate in the Under 17 YPL.
 - i. Players which are mapped to a YCC Team are not permitted to participate in the YSL.

5.18.5. Underage Players mapped in WNPL Reserves, NPL Reserves, WSL Reserves, Under 18s, SL Reserves, and Community Competitions are not permitted to move down and participate in Youth Competitions.

5.18.6. Football SA in its sole and absolute discretion will determine if a Club has breached the Player movement rule.

5.18.7. Football SA may consider exemptions for exceptional circumstances.

5.18.8. The applicable fine and/or penalty for a Club in breach of clause 5.18 is as prescribed in Appendix A (Schedule of Fines and Penalties).

5.19. School Football

- 5.19.1.** Where a Youth Player is selected to play for a school Team the Player shall have a first obligation to play in their school Team except where the Player is a registered Professional Player and is selected to play for their Club.

5.20. Unregistered, Ineligible and Suspended Players

- 5.20.1.** No Participant shall play in any Competition conducted by Football SA or any Affiliated Association unless they have registered with Football SA or Affiliated Association in accordance with the Registration process provided to Clubs on an annual basis. All Participants that have registered will be issued with a registration number. The exemption to this rule is the participation in trial Matches.
- 5.20.2.** An 'Ineligible Player' for the purposes of this Regulation is a Player who does not meet the relevant eligibility criteria to play in the Competition in which they seek to participate.
- 5.20.3.** If, in any Match, a Club plays or where interchange is applicable, names a Player on the Match Sheet, a Player that is unregistered, ineligible or suspended, the following will be implemented:
- a. the Club shall Forfeit the Match to its opponent, who will be deemed to have won the Match by a score of three (3) goals to nil (0). If the opposing Team has won the Match by a greater margin than three goals, the score line will stand.
 - b. The applicable Forfeit fine and/or penalty for a Club in breach of clause 5.20 for each unregistered, ineligible, or suspended Player who played or was named in the Match is as prescribed in Appendix A (Schedule of Fines and Penalties).
 - c. If the Player is a registered Player, Football SA may suspend or cancel the Player's registration.
- 5.20.4.** Where a Forfeit has been applied, the statistics of the Club that did not Forfeit the Match, that being goal scorers and best and fairest votes will be retained. Red and yellow cards will be applied in accordance with the National Disciplinary Regulations.

5.21. Ring-Ins

- 5.21.1.** If a Club knowingly or willingly plays a Player in any Match under a false or assumed name:
- a. the Club shall be deemed guilty of serious misconduct:
 - b. the Club shall Forfeit the Match to its opponent, who will be deemed to have won the Match by a score of three (3) goals to nil (0). If the Team that is being provided the Forfeit has won the Match by a greater margin than three (3) goals, the score line will stand; and
 - c. a Level 5 fine will be applied in accordance with the relevant Regulations.
- 5.21.2.** The Player and any Club official or member who knowingly or willingly authorised a Player to play in a Match under a false or assumed name shall be liable to such penalty as Football SA or the committee it appoints to hear the matter, may determine.

6. OFFICIALS AND REPORTING

6.1. Match Officials

- 6.1.1.** Football SA may establish a Match Officials Appointments Committee. This committee shall comprise of a minimum of three (3) and a maximum of five (5) people, which will include at least one person from the Competition Department as appointed by Football SA. The Match Officials Appointment Committee may allocate suitably qualified Match Officials to Matches as available.
- 6.1.2.** Payment conditions and any inconvenience fees for Match Officials related to trial and Competition Matches, Postponed or Abandoned Matches shall be approved by Football SA prior to the commencement of each Season. A detailed copy of the Seasons Match fees, method of payment shall be distributed to all relevant Clubs and Match Officials prior to the commencement of the Season or related Competition.
- 6.1.3.** Football SA may support interstate exchange programs for Match Officials.
- 6.1.4.** Nominations of Match Officials for interstate Competitions and Matches shall be made by Football SA, except for appointments made by Football Australia.
- 6.1.5.** Football SA may appoint Match Commissioners and/or request Clubs to appoint a Referee Liaison Officer to Matches.
- 6.1.6.** All Men's First Teams, WNPL and WSL shall have a full complement of Match Officials, being a Referee and two (2) assistant referees.
- 6.1.7.** Where the full complement of Match Officials is not present within 15 minutes after the scheduled starting time, the Match shall be Postponed unless otherwise directed by the Competition Administrator.
- 6.1.8.** All Senior Elite Reserves and Under 18's must have at least one (1) Match Official for the Match to commence.
- 6.1.9.** If a Match Official does not attend the Matches or is unable to officiate the Matches through injury or other reason, the Club and the appointed Match Official are to contact the relevant Football SA contact person 30 minutes prior to the Match, where possible.
- 6.1.10.** For all other Competitions, a Referee will be appointed to all Matches by Football SA, where possible.
- 6.1.11.** The Home Team shall cover all related Match Officials fees, excluding the Final, which shall be covered by Football SA.

6.2. Non-Attendance of a Match Official

- 6.2.1.** Prior to all Matches, Football SA will, where possible, notify all Clubs via e-mail of the Matches that will not receive an appointed Match Official.
- 6.2.2.** Where a Match Official has been appointed by Football SA and does not attend the Match, it is the responsibility of both Teams to notify Football SA within 24 hours of the Match, including the Club appointed Match Official.
- 6.2.3.** Where a Match Official is not appointed, the Home Team is responsible for the appointment of a Club Match Official. A Team has no right to request that the Match be Postponed due to the appointment of a Club Match Official. Any Team who refuses to take the Field of Play due to the appointment of a Club Match Official shall be deemed to have committed a breach of these Regulations.
- 6.2.4.** For Under 15 and Under 16 Youth Club Championship Matches, in the absence of an appointed Match Official, both Teams can agree to play the Match with the appointment of a Match Official from a Club. When the Match is completed, the result will stand unless Football SA determines that a breach of the Football SA Regulations has occurred.
- 6.2.5.** The appointed Club Match Official must ensure that both Teams in the Match have completed a Match Sheet.
- 6.2.6.** The appointed Club Match official must ensure they receive the Match Sheets from both Teams prior to the commencement of the Match.
- 6.2.7.** The Club Match Official has the same decision-making capacity as a Match Official appointed by Football SA. This means that they can enforce cautions, send-offs and submit any reports regarding Team and/or Spectator behaviour.

- 6.2.8.** On completion of the Match, the Club Match Official must ensure that the Match Sheet is completed by including:
- all Goal scorers:
 - cautions and red cards:
 - Player injuries; and
 - iv. Player votes (where required).
- 6.2.9.** The Home Team must list the Club appointed Match Official in the Competition Management System as a non-accredited Match Official.
- 6.2.1.** A Club that has a complaint following a Match where there has was no Match Official appointed by Football SA must follow the process in clause 6.6.2 of these Regulations.
- 6.2.2.** Where an appointed Match Official does not attend, it is the responsibility of the Home Team only to notify Football SA. Any dispute is captured under clause 6.5.5.

6.3. Coaches

- 6.3.1.** Coaches are required to possess at least the minimum coaching accreditation as outlined below. For additional details regarding the recommended coaching accreditation for each competition, refer to the relevant competition in Appendix J (Venue Policy).

Competition	Men's	Women's	Youth
NPL	First Team Coach: B Diploma Reserve Team Coach, Under 18s Coach and all assistant Coaches: C Diploma	First Team Coach: C Diploma. Reserve Team Coach and all assistant Coaches: Foundation of Football Certificate.	N/A
State League 1 (State League for Women's)	First Team Coach: C Diploma Reserve Team Coach, Under 18s Coach and all assistant Coaches: Foundation of Football Certificate	Senior Women's Coaches, Reserves Women's Coaches and all assistant Coaches: Foundation of Football Certificate.	N/A
State League 2	First Team Coach: C Diploma Reserve Team Coach, Under 18s Coach and all assistant Coaches: Foundation of Football Certificate	N/A	N/A
Community	N/A	Foundation of Football Certificate	N/A
MiniRoos (6-11)	N/A	N/A	MiniRoos Certificate
YCC	N/A	N/A	C Diploma
Youth Premier League U12 and U17	N/A	N/A	C Diploma
Youth State League	N/A	N/A	Foundation of Football

- 6.3.2. All registered Coaches must have a valid DCSI Working with Children Check.
- 6.3.3. Prior to a Club publicly announcing the appointment of a Coach, the Club must notify Football SA of the appointment, ensuring that the Coach meets the Coaching accreditation required of the Competition. Coaches who do not meet the required accreditation are not to be appointed.
- 6.3.4. Coaches that hold overseas accreditation must have their accreditation recognised and endorsed by AFC through Football Australia.
- 6.3.5. Football SA may provide an opportunity for all Coaches to join an annual Coaching Registration Program. The fee for this program will be determined by the Football SA on an annual basis.

6.4. Online Team Squads

- 6.4.1. Teams participating in a Senior Elite Competition is required to submit their online Team lists through the Competition Management System by 12.00PM Thursday prior to the weekend Match or no less than 24 hours prior to kick-off for any mid-week Matches.
- 6.4.2. The applicable fine and/or penalty for a Club in breach of clause 6.4 is as prescribed in Appendix A (Schedule of Fines and Penalties).

6.5. Notification of Results

- 6.5.1. Unless Football SA direct otherwise, the Match Official shall be responsible for reporting the result of their appointed Match, including all Match and Player statistics and any other information required by Football SA within 30 minutes of the Match concluding.
- 6.5.2. Team Managers are required to review the Match Sheet via Dribl and confirm the information submitted by the Match Official. Team Managers are able to dispute any of the submitted information via Dribl within 24 hours of the scheduled kick-off of the Match.
- 6.5.3. Football SA will review all disputed post-Match Sheets in the week following the Match.
- 6.5.4. The Match result must be submitted online in the Competition Management System by the Match Official. Where no Match Official appointed by Football SA attended, the Home Club must submit the results and statistics no later than one (1) hour post completion of the Match.
- 6.5.5. The Home Team is responsible for uploading MiniRoos results. However, the publication of results is strictly prohibited.
- 6.5.6. If a Club dispute any of the Match information on Dribl, they must submit a dispute on Dribl with reasons. Any dispute must be submitted no later than 48 hours of the scheduled kick-off of the Match. Football SA will review all submitted disputes and make determination in its sole and absolute discretion. For further information on entering results online refer to the Dribl User Guide.
- 6.5.7. The applicable fine and/or penalty for a Club in breach of clause 6.5 is as prescribed in Appendix A (Schedule of Fines and Penalties).

6.6. Match Results

- 6.6.1. Inducements
 - a. No Club or Participant shall give or receive, or attempt to give or receive, any inducement to or from any person to wrongfully affect or influence the result of any Match. Any Club who breaches this Match rule shall be liable to such penalties as determined by Football SA or any disciplinary committee.
- 6.6.2. Protests
 - a. Any protest on the result of a Match shall be in writing and shall be submitted to Football SA within 48 hours of the end of the Match to which the protest relates.
 - b. No protest may be made with regards to a decision of a Match Official. The decision of the Match Official is a decision of fact. No admitted or proved error can lead to the questioning of the result of the Match.

- c. Protests shall be heard and determined by Football SA or any such Committee or person as Football SA may appoint.

6.6.3. Postponement

- a. Where a Match has been Postponed, the Host Team is required to notify the Competition Administrator within 24 hours of the Postponed Match, the date, time and venue of when the Match will be played. Where the two Clubs cannot agree to reschedule the Match within the required timeframe, the Competition Administrator will:
 - i. direct that the Match be played at a time and place fixed by the Competition Administrator; or
 - ii. implement a Forfeit result; or
 - iii. Class the Match as a no played Match.

6.7. Ground Stewards

- 6.7.1.** All Teams must provide a minimum of one (1) person to act in the role of Ground Steward for all Matches except in the case of Football SA Senior Men's First Grade and Reserve Grade Matches, where three (3) people from each Team must be appointed to the role of Ground Steward. Prior to the commencement of each Match, the Ground Steward/s are required to introduce themselves to the Match Official.
- 6.7.2.** Where the Field of Play is not fenced for a Match between senior Teams, the Home Team is responsible for providing a minimum of five (5) Ground Stewards for the Match.
- 6.7.3.** The Disciplinary Committee and/or Football SA have the discretionary power to require a Club to allocate more Ground Stewards than the minimum for Matches.
- 6.7.4.** If the required number of Venue stewards are not provided, the Match Official will not commence the Match. If the Match is unable to be commenced within the allotted time, 15 minutes after the nominated kick-off time, the Match Official will abandon the Match in accordance with rule 4.11 of these Regulations.
- 6.7.5.** Ground Stewards must be 18 years of age and over and are responsible for undertaking the following roles:
 - a. Ensuring that only Players and Officials are within the Technical Areas;
 - b. Assisting Match Officials as requested;
 - c. Accompanying Match Officials on and off the Field of Play;
 - d. Ensuring the Spectator Code of Behaviour is complied with by the Spectators of the Club for which the Ground Steward has been appointed. If a Spectator is not behaving in accordance with the Spectator Code of Behaviour, a Ground Steward may approach the person and remind them of the requirements. Ground Stewards should not become involved with Spectators of the opposing Club.
 - e. Where Spectators are not aligned to either Team playing in the Match, the Ground Stewards from the Home Team will be responsible for monitoring and enforcing the Spectator Code of Behaviour with these Spectators:
 - f. Submitting a Club Match Incident to Football SA, where applicable, reporting any inappropriate behaviour.
- 6.7.6.** Ground Stewards should not at any time engage in any verbal or physical altercations. If Spectators from the opposing Club are not behaving in accordance with the Spectator Code of Behaviour and no action is being taken by that Club's Ground Stewards, a Report should be submitted to Football SA during normal business hours within 48 hours of the Match using the Ground Steward report template provided by Football SA.
- 6.7.7.** On receipt of the Report, the relevant Competition coordinator will determine what action is required. Further information may be sought from the Ground Steward.
- 6.7.8.** Once the Report has been actioned and an outcome is known, this information will be provided to the Club to which the reported Ground Steward was appointed.
- 6.7.9.** While acting in the role of a Ground Steward, the person must not consume alcohol or smoke.

6.7.10. As prescribed in Appendix A (Schedule of Fines and Penalties) a sanction/penalty may apply to a Club that does not provide the required number of Ground Stewards and/or the Ground Stewards do not fulfil the role as outlined above when appointed.

6.8. Registration of Team Officials

6.8.1. All Team Officials employed or engaged by Clubs that participate in Competitions and Affiliated Associations must be registered through the National Registration system for their Club.

6.8.2. No Team Official shall be named on a Match Sheet and occupy the Technical Area, at any Match:

- a. unless they are registered with Football SA and their Club prior to the commencement of the Match that they are participating in; and
- b. have completed the required Child Safe requirements including a Working with Children Check (WWCC) in accordance with the Football SA Child Safe Policy.

6.8.3. Unless Football SA shall otherwise determine in its full discretion, the Registration of all Team Official shall expire at the completion of each Season.

6.8.4. Medical personnel are required to provide a copy of relevant qualifications to their Club. This would be either Sports Trainer Accreditation or Certificate of Registration as a Doctor or Physiotherapist.

6.8.5. The applicable fine and/ or penalty for a Club in breach of clause 6.8 is as prescribed in Appendix A (Schedule of Fines and Penalties).

6.9. Change in Registered information

6.9.1. If there are any changes to the Registration of a Team official this must be updated in the registration system by the Club or Team official within 72 hours of the change occurring.

6.10. Registration of Match Officials

6.10.1. All Match Officials must register on the National Registration System.

6.10.2. No Match official shall officiate in any Football SA sanctioned Match unless:

- a. they have registered through the National Registration System;
- b. they have completed the required Child Safe requirements including a Working with Children Check (WWCC) in accordance with the Child Safe Policy;
- c. hold the appropriate accreditation; and
- d. are financial with Football SA.

6.10.3. Match Officials will be registered with Football SA from 1 January to 31 December of each year.

6.11. Club Official meeting attendance

6.11.1. All Clubs shall ensure that a Club Official attends all meetings as scheduled by the Football SA. Meetings will be notified in a timely manner, where possible.

6.12. Reports of Contravention of Rules and Regulations

6.12.1. Match Officials, registered Club officials and prescribed Officials of the Football SA shall make a Report to the Competition Administrator any contravention of any rule or regulation which they observe or at which they are present within 48 hours of the end of the Match to which the contravention relates.

6.12.2. Any Club or person affected by any contravention of any rule or regulation may make a Report the contravention to the Competition Administrator within 48 hours of the end of the Match to which the contravention relates.

- 6.12.3.** If the Competition Administrator observes any contravention of any rule or regulation or is present when any such contravention occurs, they may make a Report on the contravention and act on that report as if it is a Report lodged under clause (1).
- 6.12.4.** Football SA may at any time in their discretion extend the time limits specified in clause (1) and (2).

6.13. Action on reports

- 6.13.1.** On receipt of a Report, the Competition Department may request further information relating to the incident and on completion of the investigation take the following action:
 - a. Implement no further action:
 - b. Refer the matter to the Competition Management Committee or the Disciplinary Committee under the Football SA Disciplinary and Judicial Bodies Regulations.

7. MEN'S AND WOMEN'S FINAL SERIES

7.1. The Competition

- 7.1.1.** A Final Series may involve Seniors, Reserves and Under 18 Teams for the men's Competitions and Seniors and Reserves for the women's Competitions.
- 7.1.2.** Football SA will determine, in consultation with the Clubs, the structure and format of any Final Series to be conducted. Details will be distributed to Clubs prior to the Season commencing.
- 7.1.3.** The Team that finishes at the top at the conclusion of the Home and Away Season in the Seniors, Reserves and Under 18s (where a Final Series is conducted) will be referred to as League Premiers.
- 7.1.4.** Where there is no Final Series conducted, the Team that finishes first in their respective Competition will be declared the League Premiers.

7.2. Host Club Responsibilities

- 7.2.1.** Host Clubs for Finals will be determined by their finishing position at the conclusion of the Home and Away Season.
- 7.2.2.** Football SA will have the sole and absolute discretion over the allocation of Venues for all Matches played in the Final Series.
- 7.2.3.** Host Clubs are responsible for all costs associated with the hosting of the Matches including the payment of all Match Officials. Any variance to this is at the sole and absolute discretion of Football SA.
- 7.2.4.** Revenue from the Matches will remain with the Host Club unless prior arrangement has been made between Host Club and Venue management.
- 7.2.5.** The Clubs involved in the Final Series will be required to provide the necessary Ground Stewards as per Clause 6.7 of these Regulations.

7.3. Kick Off Times and Match Duration

- 7.3.1.** Matches for the Final Series will be set by Football SA.
- 7.3.2.** All Final Matches shall be of 90 minutes in duration, 45 minutes each way with a maximum 15-minute interval at half time.
- 7.3.3.** In the event of a Match being drawn at the end of normal time two periods of extra time of 2 x 15 Minutes will be played. If the Match is still drawn at the end of extra time, the result shall be determined by penalty kicks in accordance with the Laws of the Game.
- 7.3.4.** Note: Football SA will not sanction any other Matches to be played which are deemed to be in conflict with this Competition.

7.4. Eligibility of Players

- 7.4.1.** No Player shall be permitted to play for more than one (1) Club in the Final Series.
- 7.4.2. Reserve Teams**
To be eligible to play in the Finals Series Players must have played at least six (6) Matches with the Club's Reserve Team during the Home and Away season. Clubs are permitted to use Players from their Under 18s, Community and/or Youth Teams without them having played the required number of Matches as outlined above.
- 7.4.3. Under 18 Teams**
To be eligible to play in the Finals Series Players within the age ruling as per the these Regulations, a Player must have played at least six (6) Matches with the Club's Under 18 Team during the Home and Away Season. Clubs are permitted to use Players from their Youth Teams without them having played the required number of Matches as outlined above. Where a Youth Player, that is a Player that plays in the Football SA Youth Competition, has played in six (6) or more Matches in the Reserves or Senior Grade, the Player will not be eligible to play in the Under 18s.
- 7.4.4. Adelaide United First Team**

- a. To be eligible to participate in the Club's First Team Finals Series Matches, Players must have played at least six (6) Matches with the First Team, Reserves or Football SA Academy team during the Home and Away Season.
- 7.4.5.** Football SA in its sole and absolute discretion may in extenuating circumstances provide an exemption for a Player to play who does not meet the above criteria.
 - 7.4.6.** It should be noted that where Clubs have Teams participating in the same round of the Final Series, they may call for Players to play in a higher grade. However, once a Player has played in that higher grade during that round of Matches, they shall become ineligible to play in a lower grade for their Club in the same round of Matches unless Clause 7.5.5 is satisfied.
 - 7.4.7.** A Player must have played in the Match to be regarded as having participated in the Match. A Player that is named on the Match Sheet as a Substitute but does not go onto the Field of Play has not participated in a Match.
 - 7.4.8.** Any Goalkeeper who is within the age restriction shall be eligible to play as a goal-keeper in either the Reserves or Under 18 Final series and the above restrictions for Matches in the Reserve and Under 18 grades do not apply.
 - 7.4.9.** Any Club that fields a Team with an Ineligible Player breaches these Regulations and will be penalised as prescribed in Appendix A (Schedule of Fines and Penalties).

7.5. Substitution and Interchange of Players

- 7.5.1.** In the WNPL and Men's Senior and Reserve Competitions, Substitutions will be used. In the WNPL Reserves Competition, Interchanges will be used and additional Players are permitted to be listed on the Match Sheet during Finals where extra time may apply, to a maximum of 18 Players.
- 7.5.2.** Where Substitutions are used in a Match where there will be no extra-time played, a Team may name six (6) Substitutes with no more than the same five (5) Players permitted to be substituted during the Match.
- 7.5.3.** Where there is a potential for a Match to go into extra-time, a Team may name seven (7) Substitutes with no more than the same six (6) Players permitted to be substituted during the Match.
- 7.5.4.** If a Match goes into extra-time, each Team is permitted to use an extra Substitute. For the avoidance of doubt, a Team can use a maximum of five Substitutes up to the end of normal time. Once the Match goes into extra- time, a sixth Substitute may be used.
- 7.5.5.** Where a Player has come on as a Substitute, the Player is permitted to play in a lower grade Team in the same round if the Player is recorded on the Match Sheet as having entered the Field of Play from 75 minutes or later.
- 7.5.6.** Interchange will be used in all other Competitions, including the Under 18s and WNPL Reserves. A Team may list a maximum of 16 players on the Match Sheet and all Players can be used.
- 7.5.7.** The Match Official must acknowledge all Substitutes and Interchanges.
- 7.5.8.** Where Substitution rules apply, the Player is deemed to have played if they have entered the Field of Play as a Substitute. Where interchange applies, if the Player is named on the Match Sheet it will be deemed that they have participated in the Match.

7.6. Eligibility for National Second Tier Competition

- 7.6.1.** The League Premiers of the Men's National Premier League Competition 2025 season (**2025 NPL Men's Premiers**), will be eligible to represent Football SA in the National Second Tier Competition and must, by the dates prescribed by Football Australia:
 - a. Submit to Football Australia a duly executed NST Club Participation Agreement; and
 - b. Meet Football Australia's minimum club licensing standards for Member Federations participating in the National Second Tier Competition.
- 7.6.2.** In the event that:
 - a. A Foundation Club finishes as the 2025 NPL Men's Premiers; or
 - b. The Club that finishes as the 2025 NPL Men's Premiers fails to comply with these Regulations,

the allocated slot for the National Second Tier Competition shall be awarded to the next-best placed Club that is not a Foundation Club, in accordance with these Regulations.

- 7.6.3.** Football Australia reserves the right, in its sole and absolute discretion, to make determinations regarding any aspect of the awarding of the National Second Tier Competition slots.

8. YOUTH CLUB CHAMPIONSHIP FINALS

8.1. The Competition

- 8.1.1.** A Final Series may be conducted in the Youth Club Championship at the conclusion of their respective Home and Away Season.
- 8.1.2.** Football SA will determine the structure and format of any Final Series to be conducted in its sole and absolute discretion.
- 8.1.3.** The Club which finishes top of the Youth Club Championship table at the end of the Home and Away Season will be referred to as Youth Club Champions.
- 8.1.4.** The winner of the league Final Series will be referred to as the Under (insert age division) Champions.

8.2. Player Eligibility

- 8.2.1.** Players can only play for one Club in any Finals Series in any given Season.
- 8.2.2.** Players shall not be permitted to be listed in any Finals Match unless they have been named as participating on the Match sheet in at least 6 (six) Matches of that same age division.
- 8.2.3.** Where a Club may not have sufficient Players to field a Team due to injury or illness, a Club may request an exemption submitting a request to Football SA requesting to name additional Players. If an exemption is granted, the Club may only be permitted to move Players up from a lower age group of the Youth Club Championship. Any decision is at the sole and absolute discretion of Football SA.

8.3. Match Duration and Procedures to Determine the Winner of a Match

- 8.3.1.** Match Durations for all Finals shall be the same as League Matches as specified in Clause 4.8 of these Regulations.
- 8.3.2.** In the event of a draw at the end of normal time in all Finals Matches, the result shall be decided by penalty kicks in accordance with the Laws of the Game.

9. MEN'S CUP COMPETITION

9.1. General

- 9.1.1.** Football SA will conduct the Preliminary Rounds of the National Cup Competition known as the Hahn Australia Cup for Senior Grade Teams. In addition, a knock-out cup Competition known as the Federation Cup will be conducted for Reserve and Under 18 Grades.
- 9.1.2.** Teams that do not participate in the Senior Men's Competition but are affiliated to Football SA may nominate to participate in the Preliminary Rounds of the Hahn Australia Cup by completing the prescribed registration form. This form will be distributed on an annual basis.

9.2. Team Entry

- 9.2.1.** All Teams currently participating in the Senior Men's Competitions, that being Seniors, Reserves and Under 18s, will be required to participate in the Cup Competitions conducted by Football SA each season. Each club will be required to pay an annual registration fee associated with participating in the Hahn Australia Cup Competition as prescribed by Football Australia and/or Football SA.
- 9.2.2.** Teams that participate in affiliated competitions or associations will be required to register annually to participate in the Hahn Australia Cup Preliminary Rounds.

9.3. Draw

- 9.3.1.** A draw shall be undertaken by Football SA with participating clubs invited to attend the draw for each round of the cup. The name of each club involved in the cup competition shall be placed into the draw. Teams will be drawn out one at a time to determine Matches. The first Team drawn out will be the Home Team, the second Team to be drawn out, will be the Away Team. Teams will be drawn out until no further Teams are left.
- 9.3.2.** Where the draw is such that a bye or byes are required, the Team or Team/s that remain following the draw to fill all Matches, will be allocated the bye/s.
- 9.3.3.** No draw will take place for Reserves or Under 18 Cup Competition. Where possible, the draw will be aligned to the Senior Team.
- 9.3.4.** If the senior Team is drawn to play at home, where possible, the Reserve and Under 18 Cup Teams will play at the same venue as the senior Team.
- 9.3.5.** Any Team which nominates to participate from a regional Affiliated Association will automatically be drawn as the Home Team for rounds 1 and 2 of the Competition only. In the event two regional Teams are drawn against each other, the First Team drawn will be the Home Team and will host the Match.
- 9.3.6.** The Matches:
 - a. Round 1 - 64 Teams: All Teams placed into Round 1. NPL clubs are seeded for this Round only to avoid being drawn against each other.
 - b. Round 2 - 32 Teams: All 32 winning Teams from Round 1.
 - c. Round 3 - 16 Teams: All 16 winning Teams from Round 2.
 - d. Quarter Finals - 8 Teams: All eight (8) winning Teams progress from Round 3.
 - e. Semi Finals - 4 Teams: All four (4) winning Teams progress from Quarter Final.
 - f. Final - 2 Teams: The two (2) winning Teams from the Semi-Finals progress to the Final.

9.4. Kick off Times and Duration of Matches

- 9.4.1.** Football SA will set the dates for all Cup Competition rounds.
- 9.4.2.** The Host Club in conjunction with Football SA may nominate the date of the Match, in accordance with the scheduled round and nominate the kick off times.
- 9.4.3.** All Matches shall be of 90 minutes in duration, 45 minutes each way with a 15 minute interval at half time.

- 9.4.4.** In the event that a Match is drawn at the end of normal time, two periods of extra time 2 x 15 minutes will be played. If the Match is still drawn at the end of extra time the result shall be decided by penalty kicks in accordance with the FIFA Laws of the Game.

9.5. Eligibility of Players

- 9.5.1.** All players must be registered with their club in the Football Australia Registration System.
- 9.5.2.** No player shall be permitted to play for more than one Club in the Cup Competition.
- 9.5.3.** Players, once having crossed the line of play in the Cup Competition shall be cup tied to that club.
- 9.5.4.** A player that has played for their club in the Hahn Australia Cup Preliminary Rounds, is ineligible to play in the Under18s or Reserves Federation Cup for their club.
- 9.5.5.** Once a player has played for a Team within their club, the player may move up and play in a higher-grade Cup competition. Once a player has played in the higher-grade Cup competition they are not permitted to move back down and play in the lower grade Cup competition for their club.
- 9.5.6.** A goalkeeper from a lower grade may move up and play in a higher-grade Cup competition and then move back down to the grade that the goalkeeper came from.
- 9.5.7.** Football SA may grant an exemption to the above rules in its sole and absolute discretion.

9.6. Match Sheets

- 9.6.1.** Each Club shall submit a completed Match Sheet in the format approved by Football SA. It is the responsibility of the Club to ensure the Match sheet is completed in full and correctly.
- 9.6.2.** The Match Sheet is to contain the correct names, the Registration numbers and shirt numbers of the club's players taking part in the Match, the club's nominated Substitutes for the Match and the names of the Club Officials in the Technical Area and Ground Stewards.
- 9.6.3.** The Match Sheet is to be submitted and confirmed at least 30 minutes prior to the commencement of the Match No Match is to commence prior to the Match Official sighting that the Match Sheets from both Teams have been submitted and confirmed.
- 9.6.4.** A Team will be deemed to have submitted an incomplete Match Sheet if they have not correctly provided the following details:
- a. Football Australia Registration Number for all players;
 - b. Shirt numbers for all players;
 - c. Players correct name;
 - d. Team Officials;
 - e. Ground Stewards; and
 - f. Any other details specified by Football SA.
- 9.6.5.** If a situation occurs where a Club may need to make an amendment to a Match Sheet that has already been submitted to the Match Official, a Club official may approach the Match Official prior to the commencement of the Match to make the amendment. Once the Match has commenced no amendments will be permitted to the Match Sheet.
- 9.6.6.** Clubs may list up to a maximum of eleven (11) starting Players and up to a maximum of six (6) Substitutes. One (1) substitute must be listed as a goalkeeper. If no goalkeeper is listed as a substitute, only five (5) Substitutes may be listed. Players must be clearly identified in the relevant area of the Match Sheet as either starting or as a substitute.

9.7. Substitution and Interchange of Players

- 9.7.1.** A Team may only use Players that are named on the Match Sheet in a Match.
- 9.7.2.** Substitutions will be used in the Senior and Reserve Grades.
- 9.7.3.** Teams can name up to six (6) Substitutes on their Match Sheets and must include at least one (1) goalkeeper. If no goalkeeper is listed, only five (5) Substitutes may be submitted on a Match Sheet. A Team may use a maximum of five (5) Substitutes in normal time.

- 9.7.4. To reduce disruption to the Match, each Team will have a maximum of three (3) opportunities to make Substitutions during the Match; Substitutions may also be made at half-time.
- 9.7.5. If both Teams make a substitution at the same time, this will count as one (1) of the three (3) opportunities for each Team.
- 9.7.6. Unused Substitutions and opportunities are carried forward into extra time.
- 9.7.7. If the Match requires extra time, Teams will each have one (1) additional Substitution opportunity and is permitted to use an extra substitute. Substitutions may also be made before the start of extra time and at half-time in extra time. For clarification, a Team can use a maximum of five Substitutes up to the end of normal time. Once the Match goes into extra- time, a sixth substitute may be used.
- 9.7.8. Interchange will be used in the Under 18 Grade.
- 9.7.9. In Matches where interchange is permitted, the Interchange procedure is as prescribed at clause 5.11.16.
- 9.7.10. The number of Interchanges that may be made during a Match is unlimited, a Player who has been replaced may return to the field by being interchanged for another Player; and
- 9.7.11. the referee may caution any Interchange player who enters the Field of Play before the Player being replaced has completely left the field. An Interchange player may also be cautioned if they enter the field from a place other than the Interchange zone.
- 9.7.12. The applicable fine and/ or penalty for a Club in breach of clause 9.7 is as prescribed in Appendix A (Schedule of Fines and Penalties).

9.8. Ground Stewards

- 9.8.1. All Senior and Reserve Teams shall provide at each Match a minimum of three (3) Ground Stewards.
- 9.8.2. All Under 18 Teams shall provide at each Match a minimum of one (1) Ground Steward.
- 9.8.3. Where the Field of Play is not fenced, each Team is responsible for providing a minimum of five (5) Ground Stewards for the Senior Grade Match.
- 9.8.4. The Disciplinary Committee and/or Football SA have the discretionary power to require a Club to allocate more Ground Stewards.
- 9.8.5. For further information on Ground Stewards refer to Clause 6.7 of these Regulations.

9.9. Host Venues

- 9.9.1. The first named Team shall be the Home Team.
- 9.9.2. The Reserves and Under 18 Cup Matches will be played as directed by Football SA. Where possible, the Matches will be aligned with the Senior Team or as stipulated below:
 - a. Host Senior Team to host Reserve and Under 18 Cup Matches.
 - b. Home Reserve Team to host its Match and Under 18 Match.
 - c. Home Under 18 team to host its Match.
- 9.9.3. Football SA will be responsible for allocating Matches to Host Venues. Where Matches are being hosted, the Host Club shall be responsible for all costs associated with hosting the Matches including payment of Match Officials for all Matches that are conducted at the Venue. The Host Club will retain all gate receipts and canteen and bar revenue.
- 9.9.4. Once the Competition reaches the Quarter Final stage, Venues are required to adhere to the Minimum Venue Requirements for the State League 1 competition. Where a club is drawn at home and their Venue does not meet the Minimum Venue Requirements, one of the following options will be applied;
 - a. Host Club nominates a venue that does meet the criteria;
 - b. The Match is hosted at the opposing club's venue;
 - c. Venue as determined by Football SA.
- 9.9.5. Semi Final and Final Matches will be played at neutral venues where possible and these Venues will be at the sole discretion of Football SA

9.10. Match Balls

- 9.10.1. Before the start of each Match in all Competitions, or any other Competition organised and sanctioned by Football SA, the Home Team shall provide the Match Official at least two (2) balls of a type and brand approved by Football SA, 30 minutes prior to the commencement of the Match. Where directed by Football Australia or Football SA, Clubs must use the Official Hahn Australia Cup Match Ball.
- 9.10.2. The applicable fine and/or penalty for a Club in breach of clause 9.10 is as prescribed in Appendix A (Schedule of Fines and Penalties).

9.11. Match Officials

- 9.11.1. Football SA shall appoint Match Officials for all Cup Matches. The Home Team or hosting club shall cover all related Match Officials fees, excluding the Semi-Finals and Final. Football SA will be responsible for the payment of Match Officials for Semi-Finals and Final Matches.
- 9.11.2. Match Official fees for Cup Competitions will be set by Football SA and published on an annual basis.

9.12. Admission Charges

- 9.12.1. The admission charges to be applied by clubs hosting a cup Match shall be the same fee that the club charges for a Home Venue Match as outlined in Clause 4.3 of these regulations.
- 9.12.2. If the club is not a National Premier League or State League One or Two club, the club shall charge the fee that they normally charge at their Home Venue.
- 9.12.3. Admission for Players and officials into Venues on Match days will be by a current season pass or where it is an affiliated association club, via a Team list, excluding Semi-Final and Final Matches. Season passes will not be valid for Semi-Final and Final Matches.

9.13. Forfeits

- 9.13.1. Clubs who Forfeit a Cup Match, will Forfeit the Match by 3 goals to 0 and incur the applicable fine and/or penalty as prescribed in Appendix A (Schedule of Fines and Penalties).

9.14. Semi-Finals and Finals

- 9.14.1. Semi-Final and Final Matches shall be played at a venue determined by Football SA and will be allocated at the sole and absolute discretion of Football SA.
- 9.14.2. The First Team named in the draw for Semi-Final and Final Matches will be the Home Team and will wear their allocated home playing strip.
- 9.14.3. The admission fee for Semi-Final and Final Matches will be set by Football SA on an annual basis.
- 9.14.4. Match Official Fees for the Semi Final and Final Matches shall be paid by Football SA.
- 9.14.5. Football SA will be responsible for organising trophies and medals for all Cup competitions and the presentation of them to Teams.
- 9.14.6. A Player of the Match medal may be presented at the Final of the Senior Grade Cup Competition.
- 9.14.7. Football SA will be responsible for determining the process to be used in awarding this medal.

9.15. Adelaide United FC

- 9.15.1. Adelaide United Youth Team, the Team that competes in the National Premier League SA, is not eligible to participate in the Hahn Australia Cup South Australian Preliminary Rounds. This is due to Adelaide United FC competing in the competition as an A-League Team.
- 9.15.2. Adelaide United FC will be permitted to participate in the Reserve Grade Federation Cup.
- 9.15.3. Football SA Academy Team will be permitted to participate in the Under 18s Federation Cup.
- 9.15.4. To be eligible to play in the Reserve Grade Cup Competition for Adelaide United FC, a Player must not have been named as a starting Player in the senior Team five (5) or more times.
- 9.15.5. Any Player that participates in an A-League Match in the current season, is not eligible to participate in the Under 18 or Reserve Grade Federation Cup.

- 9.15.6.** To be eligible to play in the Under 18 Grade Federation Cup Competition for Football SA Academy Team, a Player must not have been named as a starting Player in the Reserve or Senior Team for Adelaide United FC in the National Premier League SA five (5) or more times.
- 9.15.7.** A goalkeeper from a lower grade may move up and play in a higher-grade Cup competition and then move back down to the grade that the goalkeeper came from.

10. WOMEN'S CUP COMPETITION

10.1. Draw

10.1.1. A draw shall be undertaken by Football SA with the participating Clubs invited to attend the draw for each round of the cup. The name of each Club involved in the Competition shall be placed into the draw. Teams will be drawn out one at a time to determine the Matches. The First Team to be drawn will be the Home Team; the second Team to be drawn out, will be the Away Team. Teams will be drawn out until no further Teams are left. If there is a Team left in the draw, this Team will be allocated a bye.

10.1.2. Cup Competition Matches shall be played as scheduled by Football SA.

10.1.3. The Competition will be divided into Elite and Community Competitions. Unless otherwise specified under a subheading, these rules apply to both Community and Senior Elite Competitions.

10.1.4. Community Competition:

- c. Where a Team from a lower division is drawn to play a Team from a higher division, if there are any rule discrepancies between the two divisions, the higher division rules will be implemented. This includes the use of Substitutions and duration of the Match.

10.2. Kick Off Times and Duration

10.2.1. Football SA in conjunction with the Host Club will set kick off times for all Matches. The duration of the Match will be in accordance with Clause 4.8 of these Regulations.

10.2.2. If the Match is still drawn at the end of extra time the result shall be decided by penalty kicks in accordance with the Laws of the Game.

10.2.3. In the event that a Match is drawn at the end of normal time, two periods of extra time will be played as outlined below:

- a. WNPL/WSL – 2 x 15 minutes
- b. All Community Divisions – 2 x 10 minutes

10.2.4. Community Competition:

- a. Where a Team from a lower division is drawn to play a Team from a higher division, the higher division duration will be played.

10.3. Eligibility of Players

10.3.1. Once a Player has played for a Club in a Cup Competition, the Player is unable to play for any other Club in the Cup Competition for that season.

10.3.2. Goalkeepers that are dual registered with a Football SA Development Squad and a Club Team, the Player can only play for one of the Teams in the Cup Competition.

10.3.3. A Goalkeeper from one Open Age Cup Competition may move up and play in another Open Age Cup Competition that is deemed to be of a higher grade and then return to the original Open Age Cup Competition. This ruling is only applicable to goalkeepers. Therefore, a Player cannot play in one Team as a goalkeeper and then move up and play on the field for another Team and then come back down as a goalkeeper.

10.3.4. Football SA in its sole and absolute discretion may, in extenuating circumstances, provide an exemption for a Player to play who does not meet the above criteria.

10.3.5. Where Football SA conducts several Cup Competitions, the information outlined below indicates when a Player is or is not cup-tied:

- a. A Player is permitted to play in a Youth Cup Competition, then move up and play for their Club in a higher Youth age Cup Competition or Open Age Cup Competition.
- b. Once a Player has moved up to the next age level or Open Age Cup Competition they are not permitted to move back down (e.g. if Player X participates in the Clubs Division 4 North team, they are not permitted to move down to the Clubs Division 5 North team, or any lower Leagues or divisions). Goalkeepers are exempt from this ruling.

- c. Once a Player has played in an Open Division Cup Competition, they are permitted to move up to a Cup Competition that is deemed to be of a higher grade if they have played the required number of Matches as outlined in clause 10.3 these Regulations.
- d. Once a Player has played in a higher Cup Competition, they are not permitted to move back down and play in a Youth or lower Open Age Cup Competition.

10.3.6. Community Competition:

- a. Players must play a minimum of five (5) Matches in the relevant league Competition to be eligible to play in the respective Cup Competition Semi-Final and Final Matches.
- b. A Player may move up and play in higher grade Cup Competition Semi-Final and/or Final if they have played a minimum of five (5) Matches within their respective Club.

10.4. Substitution and Interchange of Players

10.4.1. The Match Official must acknowledge all Substitutes and interchanges.

10.4.2. WNPL/WSL First Team – Substitutions will be used.

- a. A Team is permitted to name six (6) Substitutes on the Match Sheet in Matches where there will be not extra-time played. Only five (5) of the six named, can be used in the Match.
- b. the Player is deemed to have played if they have entered the Field of Play as a substitute. Where Interchange applies, if the Player is named on the Match sheet it will be deemed that they have participated in the Match.
- c. In Matches where there is a potential for extra-time to be played and where Substitutions are used, the Team may name seven (7) Substitutes and can use five (5) up to the end of normal time. If the Match goes into extra-time, each Team is permitted to use an extra substitute. For clarification purposes, a Team can use a maximum of five (5) Substitutes up to the end of normal time. Once the Match goes into extra-time, a sixth substitute may be used.

10.4.3. WNPL/WSL Reserves and Community Competitions – Interchange will be used.

- a. A maximum of 16 Players can be named on the Match sheet and all Players named can be used.

10.5. Host Venues

10.5.1. The first named Team shall be the Home Team. Unless otherwise determined, the Home Team will host the Match/s.

10.5.2. The Host Club shall be responsible for hosting all Matches scheduled at the venue. The Host Club shall be responsible for all costs associated with hosting the Matches including payment of Match Officials for all Matches. The Host Club will retain all gate receipts and canteen and bar revenue.

10.5.3. Semi Final and Final Matches will be played at neutral venues where possible and these venues will be at the sole discretion of Football SA.

10.6. Match Officials

10.6.1. Football SA shall appoint Match Officials for all Cup Matches. The Home Team or Host Club shall cover all related Match Officials fees, excluding the semi-Finals and Final. Football SA will be responsible for the payment of Match Officials for semi-Finals and Final Matches.

10.6.2. Match Official fees for Cup Competitions will be set by Football SA and published on an annual basis.

10.7. Admission Charges

- 10.7.1.** The admission charges to be applied by Clubs hosting a cup Match are to be in line with the admission charges for league Matches, where applicable.

10.8. Forfeits

- 10.8.1.** Clubs who Forfeit a Cup Match, will Forfeit the Match by 3 Goals to 0 and will incur a fine/penalty as prescribed in Appendix A (Schedule of Fines and Penalties).
- 10.8.2. Community Competitions:**
- a. A deduction of 3 Competition points will be applied to the Team's league table for Forfeiting a regional Match.
- 10.8.3. Senior Elite Competitions:**
- a. If a WNPL Senior Team or WSL Senior Team Forfeit a Cup Match, the Club will Forfeit the Match by three (3) goals to nil (0), will incur the prescribed fee and three (3) Competition points will be deducted from the Clubs Senior Team league table.

10.9. Semi-Finals and Finals

- 10.9.1.** Semi-Final and Final Matches shall be played at neutral venues and will be allocated at the sole and absolute discretion of Football SA.
- 10.9.2.** The First Team named in the draw for semi-Final and Final Matches will be the Home Team and will wear their allocated home playing strip.
- 10.9.3.** The admission fee for Semi-Final and Final Matches will be set by Football SA on an annual basis.
- 10.9.4.** Match Official Fees for the Semi Final and Final Matches shall be paid by Football SA.
- 10.9.5.** Football SA will be responsible for organising trophies and medals for all Cup Competitions and the presentation of them to Teams.
- 10.9.6. Senior Elite Competitions:**
- a. A Player of the Match Medal may be presented at the Final of the WNPL/WSL Cup Competition. Football SA will be responsible for determining the process to be used in awarding this medal.

11. YOUTH CUP COMPETITION RULES

11.1. Player Eligibility

- 11.1.1.** Players can only play for one Club in all Cup Competitions in any given Season.
- 11.1.2.** A Player is considered Cup-tied to the highest grade in which they have participated.
- 11.1.3.** Players shall not be permitted to be listed in a semi-Final or Final of the Youth Cup Competition unless they have been named as participating on the Match Sheet in at least one Match in an earlier cup round of that same age Cup Competition. Where a Team progresses directly into the semi-Final without playing a Match, this rule is not applicable.
- 11.1.4.** Any Player that is listed as a Participant on a Match Sheet is deemed to have participated in that Match.
- 11.1.5.** Where a Club may not have sufficient Players to field a Team in a semi-Final or Final due to injury or illness, a Club may request an exemption to Clause 4.8 by submitting a request to Football SA requesting to name additional Players. If an exemption is granted, the Club may only be permitted to move Players up from a lower or equal age group. Any decision is at the sole and absolute discretion of Football SA.

11.2. Movement of Players

- 11.2.1.** A YCC/YPL mapped Player is not permitted to participate for a YSL Team in any Youth Cup Competition.
- 11.2.2.** A YSL mapped Player may participate for a YCC Team in a Youth Cup Competition however will be Cup tied to that higher grade Team. Once the Player has moved up and played in the YCC Team in the Youth Cup Competition, they are not permitted to move back down to the YSL Youth Cup Competition.
- 11.2.3.** Players are not permitted to participate in the Youth Cup Competition if they have participated in a Senior Cup Competition, being the Under 18s, Reserves, Senior or Hahn Australia Cup Competition. Goalkeepers are exempt from this rule and may participate in the Youth Cup Competition if age eligible.
- 11.2.4.** A Goalkeeper from the Youth Competitions will not be cup tied to a specific Team and may move between Teams if age eligible. This rule applies only if they participate as a Goalkeeper only.
- 11.2.5.** A goalkeeper is not cup tied and may play for another Team of the same Club if age eligible. This rule only applies provided they play as a goalkeeper.
- 11.2.6.** The applicable fine and/or penalty for a Club in breach of clause 11.2 is as prescribed in Appendix A (Schedule of Fines and Penalties).

11.3. Match Duration and Procedures to Determine the Winner of a Match

- 11.3.1.** Match Durations for all Youth Competitions shall be the same as League Matches as specified in Clause 4.8 of these Regulations.
- 11.3.2.** There is no extra time for Youth Cup Matches. In the event of a draw at full time, the Match will be determined by penalty kicks in accordance with the FIFA Laws of the Game.

12. PENALTIES AND FINES

12.1. Summary of Fines

- 12.1.1.** Any person who contravenes any of the rules, Regulations, or related policy unless the rule, regulation or related policy specifies a penalty, shall be liable to any one or more of the following:
- expulsion, if they are a member;
 - disqualification from any Competition;
 - suspension;
 - a fine of an amount not exceeding the prescribed amount;
 - a reprimand; and
 - the refusal of registration or cancellation of their registration.
 - Any person, other than a Player, who is suspended shall be refused admission to the Venues of the Football SA and of all Clubs and Affiliated Associations for the term of the suspension.
- 12.1.2.** Penalties relating to breaches of Football Competition Rules and Regulations and Operating Regulations are stipulated in Appendix A, where a penalty is applicable. Clubs should also refer to the Venue Policy for minimum competition requirements.
- 12.1.3.** For full details of the sanction please refer to the relevant ruling.
- 12.1.4.** Additional penalties may be imposed at the discretion of FSA, which also reserves the right to override as deemed appropriate.

12.2. Scale of Penalties

- 12.2.1.** Unless otherwise specified, the following scale of penalties will be applied in conjunction with Appendix 1 of these Regulations.

Fine Level	All Competitions
1	A fine of \$25 for the first offence and \$50 for a second offence within 12 months.
2	A fine of \$50 for a first offence and a fine of \$100 for a second offence within 12 months.
3	A fine of \$100 for the first offence and a fine of \$200 for the second offence within 12 months.
4	A fine of \$250 for the first offence and a fine of \$500 for the second offence within 12 months.
5	A fine of \$500 for the first offence and a fine of \$1,000 for the second offence within 12 months.
6	A fine of \$1,000 for the first offence and a fine of \$2,000 for the second offence within 12 months.
7	A fine of \$2,500 for the first offence and a fine of \$5,000 for the second offence within 12 months.
8	A fine of \$5,000 for the first offence and a fine of \$10,000 for the second offence within 12 months.
9	A fine of \$10,000 for the first offence and a fine of \$20,000 for the second offence within 12 months.

12.3. Aiding, Abetting and Attempts

- 12.3.1.** A person who aids, abets, counsels, or procures, or by any act or omission is in any way directly or indirectly concerned in or a party to, any contravention of any rule or regulation shall be taken to have committed the contravention and shall be liable for the penalty for the contravention.

- 12.3.2. Any person who attempts to contravene any rule or regulation shall be punishable as if the attempted contravention had occurred.

12.4. Contravention by Clubs and their officers

- 12.4.1. If a Club or Affiliated Association, including an Official or Member, contravenes a rule or regulation each officer of the Club or Affiliated Association shall be taken to have contravened the rule or regulation and shall be liable for the penalty for the contravention, if they knowingly authorised or permitted the contravention.

12.5. Offences

- 12.5.1. No Club, Affiliated Association, life member, Club associate, Player, Referee or spectator shall:
- a. fail, refuse or neglect to observe and comply with the rules, Regulations and by-laws or any directions of Football SA;
 - b. use abusive, threatening, or insulting language to, or interfere with, or assault any Match official, officer, life member, Player, official or employee of Football SA or of any Club or Affiliated Association;
 - c. obtain or attempt to obtain admission to any football stadium or Venue without producing a proper entrance pass or paying the proper admission charge;
 - d. engage in any conduct which is, or in the opinion of the Football SA is:
 - i. in contravention of the Football SA Code of Conduct;
 - ii. prejudicial to the welfare, spirit, image, or the interests of the Match of football or the Football SA; or
 - iii. likely to bring the Match or the Football SA into disrepute.
 - e. make any public comment that is prejudicial to the welfare, spirit, image or the interests of the Match of football or Football SA; and
- 12.5.2. Any report or complaint under this Clause:
- a. may be made by any member or person who or which is or may be affected by the contravention, dispute, or question or;
 - b. may be made by Football SA; and
 - c. shall be heard and determined by the Disciplinary Committee.

12.6. Expulsion, Disqualification, and Suspension of Clubs and Affiliated Associations

- 12.6.1. Football SA will determine if a Club or Affiliated Association should be expelled or disqualified or suspended from a Competition or from Football SA. The CEO shall report the matter to the Football SA Board and recommend that the Club or Affiliated Association be expelled, disqualified, or suspended from the Competition or Football SA (as the case may be).
- 12.6.2. Where any committee empowered to impose any penalty under the rules or the Regulations is of the opinion that a Club or Affiliated Association should be expelled, disqualified any Competition, or suspended from a Competition or Football SA:
- a. the committee shall report the matter to Football SA and recommend that the Club or Affiliated Association be expelled, disqualified or suspended from the Competition or from Football SA (as the case may be); and
 - b. that the report and recommendation shall be submitted to the Football SA Board and that the Football SA Board have Final discretionary power over the expulsion, disqualification or suspension of the Club or Affiliated Association.

- 12.6.3.** If the Football SA Board resolves that the Club or Affiliated Association should not be expelled, disqualified, or suspended the Football SA Board may:
- a. impose such other penalty on the Club or Affiliated Association as he/she deem fit; or
 - b. refer the matter back to the Committee for it to impose such other penalty on the Club as it deems fit.
- 12.6.4.** Where any matter is reported to the Football SA Board under this rule, the Football SA Board may:
- a. expel, disqualify, or suspend the Club or Affiliated Association in accordance with the recommendation:
 - b. impose any other penalty on the Club or Affiliated Association; or
 - c. resolve that the Club or Affiliated Association should not be expelled, disqualified, or suspended and refer the matter back to the Competition Administrator or committee for it to impose such other penalty on the Club or Affiliated Association as they deem fit.

12.7. Bonds

- 12.7.1.** A bond may be applied in addition to any sanction imposed or a bond may be applied, only where extenuating circumstances exist, in lieu of the sanction that was to be imposed in accordance with the rules and Regulations or the Competition Operation Regulations of the Competition.
- 12.7.2.** The bond shall be for such period, in such form and contain such terms and conditions as may be decided by the committee that requires the bond

13. APPENDIXES

APPENDIX A - FINES AND PENALTIES

		Men's	Women's	Community/Youth
	Clause	Fine Level /Penalty	Fine Level /Penalty	Fine Level /Penalty
Ground Facilities and Club Signage	3.6	Signage Rules - Level 4 Non-Compliance of sponsor signage - Level 6 and may incur a loss of league points.	WNPL/WSL: same as Men's	Level 3
Match Forfeits	4.9	a) Team level i) Senior Team - Level 6 ii) Reserve Team - Level 5 iii) Under 18 Team - Level 4 b) <u>Regional Team</u> i) Forfeit of an away Match to a regional team: Deduction of 3 Competition points and relevant fine above.	a) Team level i) WNPL Senior Team - Level 6 ii) WNPL Reserve Team - Level 5 iii) WSL Senior Team - Level 6 iv) WSL Reserve Team - Level 4 v) All Other Competitions - Level 3 b) <u>Regional Team</u> i) Forfeit of an away Match to a regional team: Deduction of 3 Competition points and relevant fine above.	a) No Notification to Football SA – Youth Club Championship: Level 5 plus half the referee fees. b) No Notification to Football SA– Youth Premier/State League: Level 4 plus half the referee fees. c) Forfeit of an away Match to a regional team: Forfeit of the Match, a deduction of 3 Competition points and Level 4. d) Notification to Football SA – Youth Club Championship: Level 4. e) Notification to Football SA – Youth Premier/State League: Level 3.
Abandoned Matches and Walk offs	4.10	Additional penalties as determined by Football SA or the committee appointed to review the matter as prescribed in clause 4.10.	See Men's Rule	See Men's Rule
Withdrawal of Teams from Competitions	4.13	<i>FSA Discretion</i>	WNPL/WSL – FSA Discretion Community Women	YCC resulting in removal of Club from competition:

			<ul style="list-style-type: none"> a) <i>Prior to generation of fixtures – Level 3</i> b) <i>Once fixtures have been generated – Level 4</i> c) <i>Following the commencement of the season – Level 5</i> 	<ul style="list-style-type: none"> a) <i>Prior to the generation of fixtures – Level 4</i> b) <i>Once fixtures have been generated – Level 5</i> c) <i>Following the commencement of the season – Level 6</i> <p>YCC not resulting in removal of Club from competition & YPL/YSL:</p> <ul style="list-style-type: none"> a) <i>Prior to the generation of fixtures – Level 3</i> b) <i>Once fixtures have been generated – Level 4</i> c) <i>Following the commencement of the season – Level 5</i>
Match Sheets and Match Reports	4.18.7	<ul style="list-style-type: none"> a) <i>Incomplete Match Sheets</i> <ul style="list-style-type: none"> i) NPL Senior Team - Level 4 ii) State Leagues 1 & 2 Senior Teams - Level 3 iii) All other teams – Level 2 b) <i>Altering a Match Sheet once a Match has commenced</i> <ul style="list-style-type: none"> i) NPL Senior Team - Level 5 ii) State League 1 & 2 Senior Teams - Level 4 iii) All other teams - Level 3 	<ul style="list-style-type: none"> a) <i>Incomplete Match sheets</i> <ul style="list-style-type: none"> i) WNPL/WSL Senior Team - Level 3 ii) All Other Senior Competitions - Level 2 iii) Youth Grades - Level 2 b) <i>Altering a Match sheet once a Match has commenced</i> <ul style="list-style-type: none"> i) WNPL/WSL Senior Team - Level 4 ii) All Other Senior Competitions - Level 3 iii) Youth Grades- Level 2 	<ul style="list-style-type: none"> a) <i>Incomplete Match Sheets - Level 2</i> b) <i>Altering a Match sheet once a Match has commenced - Level 3</i> c) <i>If a Player who is registered and eligible to participate in accordance with the FA National Registration Regulations is not listed on the Match Sheet prior to the Match and then participates in the Match, the following shall apply:</i> <ul style="list-style-type: none"> i) First Offence in season: Warning and Level 3. ii) Second Offence in season: Forfeit and Level 4. iii) Third Offence in season: Guilty of Serious Misconduct,

				Show cause notice, Forfeit and Level 5. d) Not submitting a Match Sheet - Forfeit of the Match and a Level 3
Match Sheets and Match Reports	4.18.9	a) Senior Team i) First Offence in season: Warning and Level 6 Fine. ii) Second Offence in season: Forfeit and Level 8 Fine. iii) Third Offence in season: Guilty of Serious Misconduct, Show cause notice, Forfeit and Level 8 Fine. b) Reserve & U18 Team i) First Offence in season: Warning and Level 5 Fine. ii) Second Offence in season: Forfeit and Level 6 Fine. iii) Third Offence in season: Guilty of Serious Misconduct, Show cause notice, Forfeit and Level 8 Fine.	a) WNPL/WSL i) First Offence in season: Warning and Level 5 ii) Second Offence in season: Forfeit and Level 6 iii) Third Offence in season: Show cause notice for serious misconduct and removal of team from Competition and Level 6 Fine. b) Women's Community i) First Offence in season: Warning and Level 4 Fine. ii) Second Offence in season: Forfeit and Level 5. iii) Third Offence in season: Show cause notice for serious misconduct and removal of team from Competition and Level 5 Fine.	i) First Offence in season: Warning and Level 3. ii) Second Offence in season: Forfeit and Level 4. iii) Third Offence in season: Guilty of Serious Misconduct, Show cause notice, Forfeit and Level 5. e)
Match Balls	4.19	All teams - Level 4	WNPL/WSL Senior Team - Level 3 All Other Senior Competitions - Level 2 Youth Grades - Level 2 Fine	YCC - Level 3 YPL/YSL - Level 2 MiniRoos - Level 1
Unauthorised Matches	4.22	FSA discretion	FSA discretion	FSA discretion
MiniRoos Cancellation of Games	4.29	N/A	N/A	Level 1

Substitution and Interchange of Players	5.10 and 8.7	Level 4	Level 4	Level 3
Movement of Players	5.18	N/A	FSA discretion	Forfeit of Match and Level 2
Unregistered, Ineligible or Suspended player	5.20	NPL League Team - Forfeit and Level 5 Senior SL Teams - Forfeit and Level 4 All other Teams - Forfeit and Level 3	WNPL/WSL Team - Forfeit and Level 4 All Other Senior Competitions - Forfeit and Level 3 Youth Grades - Forfeit and Level 2	YCC – Forfeit and Level 4 and 3 Club Championship deduction points YPL/YSL - Level 3 MiniRoos - Level 2
Ring-Ins	5.21	NPL League Team – Forfeit and Level 6 State Senior League Teams – Forfeit and Level 5 All other teams – Forfeit and Level 4	WNPL/WSL Senior Team - Forfeit and Level 6 All Other Senior Competitions - Forfeit and Level 4 Youth Divisions - Forfeit and Level 3 Fine	Apply same as above “ineligible player”
Online Team Squads	6.4	Level 2	Level 2	N/A
Notification of Results	6.5	Level 2	Level 2	Level 2
Ground Stewards	6.7	All Senior Grades - Level 4 All other teams - Level 3	WNPL/WSL Senior Team - Level 4 All Other Senior Competitions – Level 3	YCC - Level 4 YPL/YSL/MiniRoos - Level 3
Registration of Team Officials (Non-Compliance)	6.8	First Offence - Level 4 and is not permitted to be a team official until all registration requirements are fulfilled. Second Offence - Forfeit of the Match and Level 5 Subsequent Offence - Disciplinary Hearing	First Offence - Level 2 Second Offence - Level 3 Subsequent Offence - Disciplinary Hearing	YCC – Level 2 YPL/YSL – Level 2
Forfeiture of Match	10.8	N/A	Deduction of 3 Competition points.	N/A
Mandatory Match Suspensions for Red Card Offences	18 (DJBR)	\$50 fine per offence (e.g. 1 Match suspension)	See Men’s	See Men’s

Mandatory Match Suspensions for Yellow Card Offences	16 (DJBR)	<p>a) \$25 fine - 5, 8, 11, 14 and 17 Cautions (yellow card accumulation)</p> <p>b) 2 yellow cards accumulated- \$50.00 fine</p> <p>OR</p> <p>Accumulation of 5, 8 and 11 Yellow Cards- \$25 Accumulation of 14 and 17 Yellow Cards - \$50 (No fine is to be paid if 5 cards are not received)</p>	See Men's	<p>i) League Accumulation of 5, 8, 11, 14 and 17 Yellow Cards - \$25 for each offence</p> <p><i>Note: No fine is to be paid if 5 cards are not received.</i></p>
Expulsion of Team Official	17 (DJBR)	<p>i) Fine \$25.00 for 5, 8, 11, 14 and 17 Cautions.</p> <p>ii) Fine \$50.00 per offence.</p>	See Men's	See Men's
Cup Competition Disciplinary Provisions	16 and 18 (DJBR)	<p>Yellow card accumulation (Hahn Australia Cup or Federation Cup)- \$25 fine Red card - \$50 fine</p>	<p>Yellow Card Accumulation- \$25 fine Red Card - \$50 fine</p>	<p>Yellow Card Accumulation- \$25 fine Red Card - \$50 fine</p>

APPENDIX B – MEN'S NPL PLAYER POINTS SYSTEM 2025

Football Australia – National Premier Leagues

A key outcome of the National Competitions Review (**NCR**) conducted in 2012 was the introduction of the Player Points System (**PPS**) to complement the Club Licensing framework for the National Premier Leagues (**NPL**). The objectives of the PPS are to:

- Provide greater opportunities to Australian Players;
- Promote a greater focus on the importance of youth development;
- Ensure Player salaries remain at levels which ensure the long-term sustainability of NPL Clubs;
- Promote Players through the Club youth development structures;
- Increase the stability of NPL Club Player Rosters;
- Maintain competitive balance and parity amongst the NPL Clubs;
- Incentivise Players progressing through to national elite pathway teams (**National Elite Pathway Team**) to return to their original NPL Clubs; and
- Reward Clubs who develop Players that progress through to a National Elite Pathway Team.

The PPS encourages NPL Clubs to simultaneously promote greater focus on youth development whilst delivering the outcomes and objectives of the NCR.

The PPS distinguishes between two distinct types of **NPL Club** teams: those upon which an age restriction is placed (e.g. U16s, U18s, U20s) (**NPL Club Age-Eligible Team**) and the NPL Club's senior team, being the **First Team**.

The PPS points cap (**Points Cap**) applies to each NPL Club's First Team Player Roster (**First Team Player Roster**) and this First Team is required to always remain within the Points Cap.

The Points Cap for the 2025 season will be set by each Member Federation, in consultation with Football Australia (**FA**), up to a maximum of 200 points.

Each Player is, as a starting point, attributed a points value of 10 points, after which his points value is adjusted depending on certain characteristics which result in points being added to or deducted from the Player's points value. A Player's points value cannot be less than 0 points.

Promoting Players from the NPL Club's Age-Eligible Teams onto the First Team Player Roster is permitted in limited circumstances as outlined further in the Explanatory Notes and Guidelines under First Team Player Roster Requirements.

Please note where differences exist between this document and the updated Player Roster Principles (PRP), the latter shall supersede this document.



1. PLAYER POINTS SYSTEM

Category	Points Adjustment	Criteria
Youth Player	-1 for each year the Player is under 23 years of age	<ul style="list-style-type: none"> • A Youth Player is 23 years of age or younger as at 31 December of the current NPL season. • In relation to a Player's age, one (1) point is deducted from the Player's points value for each year the Player is under 23 years of age. • The maximum adjustment to a Player's points value under this category is minus five (5) points.
Visa Players	+10	<ul style="list-style-type: none"> • VISA PLAYERS • A Visa Player is any Player who is not an Australian Player. • Ten (10) points is added to a Player's points value if that Player is a Visa Player. • A Visa Player will only incur a maximum of 20 points on a First Team Player Roster and will not otherwise be subject to the Switching Player category. • A Visa Player may still benefit from the other categories of the PPS (e.g. Youth Player). • An NPL Club may have a maximum of two (2) outfield Visa Players • GOALKEEPERS • Goalkeepers who are not classified as an Australian Player will not be permitted to be on an NPL First Team Player Roster. • *Goalkeepers who are not Australian Players and have pre-existing professional contracts (executed and in force prior to 19 September 2024) with an NPL Club for the 2025 season will be permitted to be listed on the NPL First Team Player Roster in 2025. Where this is applicable, the team will be required to nominate one (1) less Visa Player on their NPL First Team Player Roster.
AFC/OFC Visa Player	+0	<ul style="list-style-type: none"> • An AFC/OFC Visa Player is any player who is not an Australian player and who holds citizenship from an AFC or OFC Member Association. • Zero (0) points are added to a Player's points value • An AFC/OFC Visa Player is still subject to Switching Player Points and may still benefit from the other categories of the PPS (e.g. Youth Player). • An NPL Club may have a maximum of one (1) outfield AFC/OFC Visa Player on their NPL First Team Player Roster at any one time.

Homegrown Player	-1 for each season registered with the NPL Club	<ul style="list-style-type: none"> • A Homegrown Player is a Player that has been registered for any period during a season with his NPL Club's Age-Eligible Teams. • In addition to any Player eligible for Homegrown deduction points, the NPL Club must list three (3) players, who between the ages of 15-21, were registered for a period of three (3) entire seasons or 36 months in total (noting such periods are aggregate and not required to be continuous) on its First Team Player Roster. • For avoidance of doubt, these Players are also eligible for deduction points. • One (1) point is deducted from the Player's points value for each season the Player was registered with his NPL Club's Age-Eligible Teams. • The maximum adjustment to a Player's points value under this category is minus five (5) points.
Loyalty Player	-1 for each continuous season with the NPL Club's First Team	<ul style="list-style-type: none"> • A Loyalty Player is a Player that has registered for his NPL Club's First Team for at least four (4) continuous seasons. • One (1) point is deducted from a Player's points value for each season, starting from his fourth continuous season, in which the Player is registered for the NPL Club's First Team.
Switching Player	+5	<ul style="list-style-type: none"> • Five (5) points is added to a Player's points value if: <ul style="list-style-type: none"> (a) he was registered as a professional with his previous Club (this does not apply to the nominated Australian Marquee Player(s) or to a National Elite Pathway Loan Player); or (b) he was registered in the NPL as an amateur with his previous NPL Club and he played ten (10) or more games in that NPL Club's First Team in the most recent NPL season (unless the Player's last registration was with a National Elite Pathway Team).
	+3	<ul style="list-style-type: none"> • Three (3) points is added to a Player's points value if he was registered in the NPL as an amateur with his previous NPL Club and played in less than ten (10) games in that NPL Club's First Team in the most recent NPL season (unless the Player's last registration was with a National Elite Pathway Team).
	+2	<ul style="list-style-type: none"> • Two (2) points is added to a Player's points value if he is an Australian or the clubs nominated AFC/OFC Visa Player and his last registration was as an amateur with an overseas Club.
	+1	<ul style="list-style-type: none"> • One (1) point is added to a Player's points value if the Player was last registered as an amateur with a National Elite Pathway Team and registers for a NPL Club other than their NPL Club of origin (i.e. the NPL Club he was registered with prior to that National Elite Pathway Team).
National Elite Pathway Loan Player	+0	<ul style="list-style-type: none"> • A Player will not incur Switching Player points if they are loaned to an NPL Club from a National Elite Pathway Team, provided they are an Australian Player 23 years of age or younger as at 31 December of the current NPL season.

Pathway Player	+0	<ul style="list-style-type: none"> No points are added to, or deducted from, a Player's points value only by virtue of that Player having left an NPL Club to join a National Elite Pathway Team and having returned to the same NPL Club.
Australian Marquee Player	+0	<ul style="list-style-type: none"> An Australian Marquee Player is an Australian Player that was registered as a professional Player for an A-League Club or an overseas Club immediately prior to registering with the NPL Club. The Australian Marquee Player will only incur a maximum of ten (10) points on a First Team Player Roster and will not otherwise be subject to the Switching Player category. The Player can benefit from the other categories of the PPS (i.e. Homegrown Player). An NPL Club can have a maximum of two (2) Players on its First Team Player Roster nominated as Australian Marquee Players at any one time. If an NPL Club has two (2) Australian Marquee Players on its First Team Player Roster, at least one (1) of these Players must be 23 years of age or younger as at 31 December of the current NPL season.

Points Deductions: An NPL Club's Points Total can be decreased in accordance with the following provisions:

Category	Points Bonus	Criteria
Youth Player Advancement	-3 per Player	<ul style="list-style-type: none"> Three (3) points may be deducted from a NPL Club's Points Total for each registered Player that is permanently transferred to a National Elite Pathway Team from the NPL Club's Age-Eligible Teams. The points deduction will only apply for one (1) NPL season, which must be applied in either the NPL season that the relevant Player moves to the National Elite Pathway Team, or the next NPL season.
First Team Player Loan	-3 per Player	<ul style="list-style-type: none"> Three (3) points may be deducted from a NPL Club's Points Total for each registered Player that is subsequently registered on Loan to a National Elite Pathway Team from the NPL Club's First Team Player Roster. The points deduction will only apply for one (1) NPL season, which must be applied in either the NPL season that the relevant Player moves to the National Elite Pathway Team, or the next NPL season.
First Team Player Advancement	-8 per Player	<ul style="list-style-type: none"> Eight (8) points may be deducted from a NPL Club's Points Total for each registered Player that is permanently transferred to a National Elite Pathway Team from the NPL Club's First Team Player Roster. The points deduction will only apply for one (1) NPL season, which must be applied in either the NPL season that the relevant Player moves to the National Elite Pathway Team, or the next NPL season.
Promoted Club	-20 per Club	<ul style="list-style-type: none"> A Promoted Club will receive a deduction of 20 points from their Points Total. This points deduction only applies for the Promoted Club's first season following promotion into, or being granted a licence to participate in, the NPL.

2. GENERAL DEFINITIONS AND EXPLANATORY NOTES

The general definitions are provided for ease of reference.

The following discussion points and examples are intended to provide Member Federations and NPL Clubs with further clarity with respect to each of the PPS categories.

General Definitions

First Team

First Team means the NPL Club's senior team participating in the NPL.

First Team Player Roster

First Team Player Roster means the roster of Players (min twenty (20) – max 23) for a NPL Club's First Team maintained in accordance with the Player Points System and any other NPL competition regulations provided by the applicable Member Federation.

Loan

Loan means the temporary transfer of a Player's registration from the Parent Club to the Loan Club, effected in accordance with the FA National Registration, Status and Transfer Regulations. A Club may have a maximum of 6 loan players in, and 6 loan players out at any one time.

Loan Club

Loan Club means the Club to which the registration of a Player subject to a Loan is, will be, or has been temporarily transferred from a Parent Club for the term of a Loan.

Match Day Team Sheets

Match Day Team Sheet means the list of minimum sixteen (16) and up to eighteen (18) players from the First Team Player Roster who will participate in a specific NPL fixture as a starter or as a potential substitute. The final number of Players on Match Day Team Sheet will be determined by Member Federation Competition Administrator.

National Elite Pathway Team

A National Elite Pathway Team is a team which participates in the National Elite Pathway, as determined by the FA Technical Department and the Member Federations from time to time. Points are credited for the movement of Players through the National Elite Pathway.

For the purposes of the PPS, a team is a National Elite Pathway Team if they are one of the following:

- A-League Men's Club including Academy team's participating in the NPL and or, the A-League Team;
- National Y-League team; or
- National Training Centre team (full-time programs only).
-

NPL

NPL means the national men's second tier club competition staged in each Member Federation in Australia.

NPL Club Age-Eligible Teams

NPL Club Age-Eligible teams are the teams that sit below the NPL Club First Team as determined by each Member Federation. For clarity:

- where NPL Competitions commence from Under 12s, these include Under 12s through to Under 20s
- where NPL Competitions commence from Under 13s, these include Under 13s through to Under 20s

NPL Club

NPL Club means any entity admitted by a Member Federation to field a team in the NPL.

Parent Club

Parent Club means the Club from which the registration of a Player subject to a Loan is, will be, or has been temporarily transferred to a Loan Club for the term of a Loan.

PPS or Player Points System

PPS or Player Points System means the system for calculating NPL Club's player points as set out in this document.

Points Cap

Points Cap means the permitted total value of a NPL Club's Points Total, as determined by the Member Federation, in consultation with FA, up to a maximum of 200 points.

Points Total

Points Total means the sum of all points attributed to all Players on a NPL Club's First Team Player Roster at any given time.

Promoted Club

A Promoted Club means:

- a club promoted into the NPL from a lower tier competition, including a lower division of the NPL or,
- is an entity granted a licence to participate in the NPL for the first time.

State Premiers

State Premiers means the NPL Club who is premier of the relevant Member Federation's NPL Regular Season by being top of the table at the end of the NPL Regular Season.

Explanatory Notes

NPL Club First Team Player Roster Requirements

- At all times during a NPL season, a NPL Club must include a minimum of 20 Players on its First Team Player Roster and may include a maximum of 23 Players on its First Team Player Roster.
- All Players must be registered to the appropriate age-category (where applicable). Any Player who during the NPL 2025 Season exceeds the age-limit for the oldest NPL Age-Eligible Team at an NPL Club (e.g. U20), must be included on his NPL Club's First Team Player Roster.

Youth Player

Please refer to the table below in respect to the relevant point deductions in the Youth Player category:

<i>Player's Age as at 31 December in current NPL season</i>	<i>Points Deduction</i>
22 years old (2003)	-1
21 years old (2004)	-2
20 years old (2005)	-3
19 years old (2006)	-4
18 years old (2007)	-5

Australian Player

An Australian Player is any Player who is:

- a citizen of Australia;
- a Permanent Resident of Australia (where Permanent Resident means a person residing in Australia on a "permanent" visa class issued by the Australian Government, evidenced by either the person's Visa Grant Notice or as a listed entitlement on the person's online Visa Entitlement Verification); or
- the holder of a refugee visa, humanitarian visa or protection visa issued by the Australian government. For further details see: <https://www.homeaffairs.gov.au/>.

Visa Player

- Member Federations and NPL Clubs are encouraged to refer to the following website for further clarification regarding visas: <https://www.homeaffairs.gov.au/>.
- For the purposes of the PPS, a New Zealand Citizen is classified as a Visa Player or OFC Player unless he satisfies the definition of an Australian Player. Please refer to the Department of Home Affairs for further clarification regarding the visa status of New Zealand Citizens in Australia: <https://www.homeaffairs.gov.au/>.
- Any Player participating in the NPL with a A-League Men's Club who has been permitted to play in the National Youth-League as an "NYL Australian Player" will, for the purposes of the PPS, be deemed an Australian Player.

Homegrown Player

- NPL Club must list three (3) players, who between the ages of 15-21, was registered for a period of three (3) entire seasons or 36 months in total.
- A Player does not need to register in continuous seasons in a NPL Club's Age-Eligible Teams to be eligible for Homegrown Player points.
- **Example:** For a Player who was registered to the NPL Club in the U15s, U16s and U18s but was not registered with the NPL Club in the U17s and U20s, a total of three (3) points will be deducted from his points value for the current season.
- A Player is eligible for Homegrown Player points at the same time as being eligible for Loyalty Player points.
- For the avoidance of doubt, a Player is eligible to receive a points deduction as a Homegrown Player where that Player was registered to the NPL Club's Age Eligible Teams, prior to that NPL Club being granted an NPL licence.
- **Example:** Prior to Club A being granted a licence to participate in the NPL, John Smith is registered to the age-eligible teams of Club A between 2018 and 2021 in the state league competition. On that basis, a total of four (4) points will be deducted from his points value for the current season.

Loyalty Player

- **Example:** A Player is registered with a NPL Club's First Team in 2022, 2023 and 2024 (continuous seasons). If also registered in 2024, he will be eligible to receive his first reduction of one (1) point as a Loyalty Player in the 2025 season.
- If a Player is not registered with any Club for a season and subsequently returns to his last NPL Club, the number of continuous seasons of registering for that NPL Club will be deemed to be continuous.
- **Example:** A Player was registered with the same NPL Club in 2020, 2021 and 2022 (continuous seasons), however was not registered with any Club in 2023. If the Player registers with that NPL Club in 2024, it will be deemed his fourth continuous season with that NPL Club.
- Should a Player move into a National Elite Pathway Team, the determination of the continuous seasons of service will not be deemed to have ceased if he returns to his previous NPL Club. During the Player's time in the National Elite Pathway Team, the calculation of continuous seasons of service will be suspended.
- **Example:** Player John Smith of NPL Club A has been part of the First Team squad for three (3) continuous seasons. He then moves to an A-League Men's Club for two (2) years and then at the completion of his stint with that A-League Club, he returns to NPL Club A. This season with NPL Club A will be deemed his fourth continuous season.

Switching Player

- In the event that a Player is a Switching Player, he can only be classified in one (1) category (e.g. a Player cannot incur Switching Player points in two (2) different categories).
- For the purposes of Switching Player points, played means taking the field of play (i.e. part of the starting eleven or taking the field as a substitute).
- Where a Player was registered with a NPL Club (**Former NPL Club**) and subsequently:
 - registers with a Club that does not participate in the NPL, A-League or NYL (**non-NPL Club**); and
 - having not played for the non-NPL Club in a competitive match seeks to register with a subsequent NPL Club (**Subsequent NPL Club**);
 - the Member Federation or FA may attribute Switching Player Points for that Player upon registration with the Subsequent NPL Club as if the Player had transferred directly from the Former NPL Club to the Subsequent NPL Club.
- The Subsequent NPL Club may apply to FA or the Member Federation (whichever is applicable) to justify the reasons as to why Switching Player points should not apply.

- The Member Federation has the right to determine in its sole and absolute discretion as to whether Switching Player points will apply where the Member Federation is the Competition Administrator.
- Switching Player points also apply for mid-season registrations and transfers, including a Player promoted from a NPL Club’s Age-Eligible Team.
- Where a Player is promoted from a NPL Club’s Age-Eligible Team (or equivalent) to a NPL Club’s First Team Player Roster during the season, Switching Player Points will be applied where the Player’s registration immediately prior (e.g. earlier in the 2024 season) or in the previous NPL season was with another NPL Club.
- A Player will not incur Switching Player points if they are on Loan to an NPL Club from a National Elite Pathway Team, provided the Player is 23 years of age or younger as at 31 December of the current NPL season.
- In accordance with the FA National Registration, Status and Transfer Regulations, a Player will remain registered with FA for a period of thirty (30) months from the date the Player made his or her last appearance for a Club in a Match. A Player who has been inactive for this thirty (30) month period will not incur Switching Player points should they then register with another NPL Club following this period.

National Elite Pathway Loan Player

- A National Elite Pathway Loan Player is subject to all other categories of the PPS (other than the Switching Player category). For example, a National Elite Pathway Loan Player is eligible for Loyalty Player points and Homegrown Player points.

Pathway Player

- A Pathway Player is subject to all other categories of the PPS (other than the Switching Player category). For example, a Pathway Player is eligible for Loyalty Player points and Homegrown Player points.
- A Player who departs a NPL Club for a National Elite Pathway Team and returns to the same NPL Club will be classified as a Pathway Player provided the Player has remained within the National Elite Pathway for the duration of their absence from the relevant NPL Club.

Example A: *Player history of John Smith – Eligible Pathway Player*

2021	-	<i>Registered with United FC (NPL Club)</i>
2022	-	<i>Registered with Perth Glory (NYL)</i>
2023	-	<i>Registered with Brisbane Roar (A-League)</i>
2024	-	<i>Registered with United FC (NPL Club)</i>

Example B: *Player history of Mark Jones – Ineligible Pathway Player*

2021	-	<i>Registered with United FC (NPL Club)</i>
2022	-	<i>Registered with Perth Glory (NYL)</i>
2023	-	<i>Registered with Thailand FC (Overseas)</i>
2024	-	<i>Registered with United FC (NPL Club)</i>

Australian Marquee Player

An Australian Marquee Player is subject to all other categories of the PPS (e.g. Homegrown Player) but will not be subject to the Switching Player category:

- (a) Subject to paragraph (b) below, a Player may only be categorised as an Australian Marquee Player in his first season with the NPL Club and for one (1) season only in his career for that NPL Club. For the avoidance of doubt, a Player is not able to be an Australian Marquee Player in his second season in the NPL with that NPL Club.
- (b) Notwithstanding paragraph (a) immediately above, if a Player is categorised as an Australian Marquee Player for an NPL Club, he then transfers as a professional to an A-League Men's Club or overseas Club and then subsequently returns to the NPL and seeks to register for an NPL Club (either the same or different NPL Club), he is eligible to be categorised as an Australian Marquee.

Points Deduction – Youth Player Advancement

Example: A NPL Club has an U14 team Player and an U20 team Player signed this season by a National Elite Pathway Team. The NPL Club can choose to have:

- a) six (6) points deducted (-6 points) from this season's Points Total;
- b) three (3) points deducted (-3 points) from this season's and next season's Points Total;
- c) Total; or six (6) points deducted (-6 points) from next season's Points Total.

Points Deduction – First Team Player Loan

Example: A NPL Club has two (2) First Team Players signed on Loan this season by a National Elite Pathway Team. The NPL Club can choose to have

- a) six (6) points deducted (-6 points) from this season's Points Total;
- b) three (3) points deducted (-3) from this season's and next season's Points Total; or
- c) six (6) points deducted (-6 points) from next season's Points Total.

Points Deduction – First Team Player Advancement

Example: A NPL Club has two (2) First Team Players signed this season by a National Elite Pathway Team. The NPL Club can choose to have

- a) sixteen points deducted (-16 points) from this season's Points Total;
- b) eight (8) points deducted (-8 points) from this season's and next season's Points Total; or
- c) sixteen points deducted (-16 points) from next season's Points Total.

Points Deduction – Promoted Club

This category applies to Clubs promoted into the NPL or an entity granted a licence to participate in the NPL for the first time. This points deduction only applies for the Promoted Club's first season following promotion into, or being granted a licence to participate in, the NPL.

Additional Notes

Hahn Australia Cup Preliminary Rounds/Federation Cup

The PPS does not apply to the Hahn Australia Cup Preliminary Rounds SA/Federation Cup competition.

PPS Windows

2025 Window(s)	Opening Date	Closing Date
January – February	Thursday 16 January 2025	Friday 7 February 2025
April	TBC	TBC
June/July	TBC	TBC

Use of Players aged 20 or younger

Any Player who during 2025 turns 21 years of age (2004 born) must be included on his NPL Club's First Team Player Roster.

Any Player that is born in 2005 or is younger, is able to play for the First Team without the requirement to be listed on the NPL Club's First Team Player Roster.

Exceptional Circumstance

A club may apply to Football SA to make a change to the PPS team roster outside of the designated amendment windows, in exceptional circumstances.

These may include (but not limited to):

- Long Term Player Injury – this would mean a player who is unable to play for a period of four (4) weeks or longer, supporting documentation is required to be provided upon the club making an application from a qualified General Practitioner or Specialist.
- Player Movement – Where the player leaves outside of the control of the club, for example a player is relocated due to work purposes.
- Goalkeepers – as this is a specialised position as determined by the National Registration Regulations.

The decision to grant an exemption for a club to change the PPS team roster outside of the windows is at the sole and absolute discretion of Football SA

APPENDIX C - WOMEN'S NATIONAL PREMIER LEAGUE PLAYER POINTS SYSTEM (PPS)



The objectives of the PPS are to:

- Provide greater opportunities to Australian Players.
- Promote a focus on the importance of youth development.
- Incentivise older and more experienced Players to remain in the WNPL.
- Promote Players through the Club youth development structures.
- Increase the stability of Club Player Rosters.
- Maintain competitive balance and parity amongst the Clubs.
- Incentivise Players progressing through to national elite pathway teams (**National Elite Pathway Team**) to return to their original WNPL Clubs; and
- Reward Clubs who develop Players that progress through to a National Elite Pathway Team.

The PPS encourages Clubs to simultaneously promote youth development and encourage players 25 years of age + to continue in the sport.

The PPS points cap (**Points Cap**) applies to each WNPL Club's First Team Player Roster (**Player Roster**) and this First Team is required to remain within the Points Cap.

The Points Cap for the 2024 season will be set at 200 points

Each Player is, as a starting point, attributed a points value of 10 points, after which the points value is adjusted depending on certain characteristics which result in points being added to or deducted from the Player's points value. A Player's points value cannot be less than 0 points or more than 20 points.

Promoting Players from the Club's Age-Eligible Teams (e.g. U15 and U17 teams) and Reserve Team is permitted without restrictions provided all players are registered in accordance with the eligibility rules from the Competition Operating Regulations.

Player Points System

Category	Points Adjustment	Description	Criteria
Standard Player 25 and Over	A deduction of -1 for each year the Player is 25 years of age and over	Points deducted for each Player aged 25 & over in the WNPL First Team	<ul style="list-style-type: none"> • The maximum adjustment to a Player's points value under this category is minus five points. • If a club has 4 or more players in this category in their squad a 'team bonus' of -10 points is provided
Category	Points Adjustment	Description	Criteria

Home Grown Player	-1	A Player who has risen through the youth development system within the club to be selected in the WNPL First Team	<ul style="list-style-type: none"> One point is deducted from a Player's points value each season the player has been registered to the Club's U13, U15, U17, Community and/or Reserve Teams. The maximum adjustment to a Player's points value under this category is minus five points.
Loyalty Player	-1 for each continuous season with the Club's First Team	A Loyalty Player is a Player that has registered for the Club's First Team for at least four continuous seasons	<ul style="list-style-type: none"> One point is deducted from a Player's points value for each season, starting from their fourth continuous season, in which the Player is registered for the Club's First Team.
Visa Player	10	A Visa Player is any Player who is not an Australian Player in accordance with the Player Points System	<ul style="list-style-type: none"> Ten points is added to a Player's points value if that Player is a Visa Player. A Visa Player will only incur a maximum of 20 points on a Player Roster and will not otherwise be subject to the Switching Player category. A Visa Player may still benefit from the other categories of the PPS (e.g. Loyalty Player). A Club can have a maximum of two Visa Players on their Player Roster at any one time.
AFC/OFC Visa Player	+0	An AFC/OFC Visa Player is any player who is not an Australian player and who holds citizenship from an AFC or OFC Member Association	<ul style="list-style-type: none"> Zero (0) points are added to a Player's points value. An AFC/OFC Visa Player is still subject to Switching Player Points and may still benefit from other categories of the PPS (e.g. Loyalty Player). A Club may have a maximum of one (1) AFC/OFC Visa Player on their Player Roster at any one time.
Switching Player	5	Any Player who has switched Clubs from the preceding season and/or mid-season.	<ul style="list-style-type: none"> Five points is added to a Player's points value if they were registered in the WNPL with a previous Club and played 10 or more games in that Club's First Team in the most recent WNPL season (unless the Player's last registration was with a National Elite Pathway Team).

	3		<ul style="list-style-type: none"> Three points is added to a Player's points value if they were registered in the WNPL with their previous Club and played in less than 10 games in that Club's First Team in the most recent WNPL season (unless the Player's last registration was with a National Elite Pathway Team).
	5		<ul style="list-style-type: none"> Five points are added to a Player's points value if they were previously registered as a Professional in Australia or Overseas and do not return to their club of origin.
	3		<ul style="list-style-type: none"> Three points are added to a Player's points value if they were previously registered as an Amateur Player Overseas and do not return to their club of origin.
Category	Points Adjustment	Description	Criteria
Senior Player Advancement	-8	A Player who is recruited from the Club's WNPL First Team by a ALW or Football SA/NTC team for the first time	<ul style="list-style-type: none"> A one-off deduction to the Club's total points when a Player is recruited to the ALW, Football SA or NTC Squads for the first time.
Youth Player Advancement	-3	A Player who is recruited from the Club's Junior Teams by a ALW or Football SA/NTC team for the first time	<ul style="list-style-type: none"> A one-off deduction to the Club's total points when a Player is recruited to the ALW, Football SA or NTC Squads for the first time.
Pathway Player	0	A Player that has previously left the club and registered directly with a "Pathway" team (eg: NTC, U15 Girls) and are returning to the club directly from those teams	<ul style="list-style-type: none"> No Switching Player penalty for Player's who have left a Club, joined a National Elite Pathway Team and returned to the same Club.
Promoted Club	-20	A Promoted Club will receive a deduction of 20 points from their Points Total	<ul style="list-style-type: none"> The points deduction only applies for the Promoted Club's first season following into, or being granted a licence to participate in the WNPL

General Definitions and Explanatory Notes

The following discussion points and examples are intended to provide with further clarity around each of the PPS categories.

General Definitions

National Elite Pathway Team

A National Elite Pathway Team is a team which participates in the National Elite Pathway, as determined by the Football Australia Technical Department and the Member Federations from time to time. Points are credited for the movement of Players through the National Elite Pathway.

For the purposes of the PPS, a team is a National Elite Pathway Team if they are one of the following:

- A-League W
- National Training Centre team
- Member Federation institute pathway programs

First Team Player Roster

Is the roster of Players for a Club's First Team maintained in accordance with the Player Points System and any other WNPL competition regulations provided by Football SA.

Points Total

Is the sum of all points attributed to all Players on a Club's Player Roster at any given time.

Promoted Club

A Promoted Club means: A Club promoted into the WNPL from a lower tier competition and granted a licence to participate in the WNPL for the first time.

Explanatory Notes

Player Roster Requirements

- At all times during a WNPL season, a Club must include a minimum of 18 Players on its Player Roster and may include a maximum of 23 Players on its Player Roster. A Club may promote a Player from its Age-Eligible Teams, Community Women's and/ or Reserve Team to play for its First Team without the player being included on the roster.
 - Any Player from the club's reserve and community women's team may play for its first team up to a maximum of eight (8) matches throughout a WNPL season without being required to include the Player on the Player Roster.
 - For the Player to be eligible to play in more than eight (8) matches in the WNPL season, the Player must be included on the Club's Player Roster (and therefore at that point included in the Club's Points Cap).
 - To clarify a player may be promoted from the Clubs Community and/or Reserves teams and participate in eight (8) WNPL without having to be placed on the PPS. If the club wants the player to play a ninth game, they must be placed on the PPS during the PPS Windows.
 - No more than two Visa Players may be listed on the PPS.

- Player Movement Rulings in accordance with the Competition Rules and Regulations will still apply.
- The player must enter the field of play to be deemed to have played in the match.

Australian Player

An Australian Player is any Player who is:

- a citizen of Australia.
- a Permanent Resident of Australia (where Permanent Resident means a person resident in Australia on a “permanent” visa class issued by the Australian Government, evidenced by either the person’s Visa Grant Notice or as a listed entitlement on the person’s online Visa Entitlement Verification); or
- the holder of a subclass 200 refugee visa or a subclass 866 protection visa issued by the Australian Government.

Visa Player

- WNPL Clubs are encouraged to refer to the following website for further clarification regarding visas: <http://www.border.gov.au/>.
- For the purposes of the PPS, a New Zealand Citizen is classified as a Visa Player unless they satisfy the definition of an Australian Player. Please refer to the Department of Immigration website for further clarification regarding the status of New Zealand Citizens in Australia: <http://www.border.gov.au/>.

Homegrown Player

- A Player does not need to register in continuous seasons in a Club’s Age-Eligible Teams (e.g. U11s to U17s only) and/or Reserve Team in order to be eligible for Homegrown Player points.
- Example: For a Player who was registered for the Club in the U11s and U13s but was not registered with the Club in the U15s-U17s, a total of two points will be deducted from her points value for the current season.
- A Player is eligible for Homegrown Player points at the same time as being eligible for Loyalty Player points.

Loyalty Player

- Example: A Player is registered with a Club’s First Team in 2021, 2022 and 2023 (continuous seasons). If they also registered in 2024, they will be eligible to receive a deduction of one point as a Loyalty Player in the 2024 season.
- If a Player is not registered with any Club for a season and subsequently returns to their WNPL Club, the number of continuous seasons of registering for that WNPL Club will be deemed to be continuous.

Example: A Player was registered with the same Club in 2020, 2021 and 2022 (continuous seasons), however was not registered with any Club in 2023. If the Player registers with the same Club in 2024, it will be deemed to be their fourth continuous season with the Club and a deduction of one point will be allocated.

- Should a Player move into a National Elite Pathway Team, the determination of the continuous seasons of service will not be deemed to have ceased if they return to their previous Club. During the Player’s time in the National Elite Pathway Team, the calculation of continuous seasons of service will be suspended.

Switching Player

- This category only applies where a Player registers for a new Club.
- The definition of played means taking the field of play (ie. part of the starting eleven or taking the field as a substitute).

- Switching Player points also apply for mid-season registrations and transfers.

Pathway Player

- A Player who departs a WNPL Club for a National Elite Pathway Team and returns to the same WNPL Club will be classified as a Pathway Player provided the Player has remained within the National Elite Pathway for the duration of their absence from the relevant WNPL Club and has not registered and played with another WNPL Club.

Points Deduction– Youth Player Advancement

Example: A WNPL Club has an U13 team Player and an U15 team Player signed this season by a National Elite Pathway Team. The WNPL Club can choose to have:

- (a) six points deducted (-6 points) from this season’s Points Total
- (b) three points deducted (-3 points) from this season’s and next season’s Points Total, or
- (c) six points deducted (-6 points) from next season’s Points Total.

Points Deduction – First Team Player Advancement

Example: A WNPL Club has two First Team Players signed this season by a National Elite Pathway Team. The WNPL Club can choose to have:

- (a) sixteen points deducted (-16 points) from this season’s Points Total
- (b) eight points deducted (-8 points) from this season’s and next season’s Points Total, or
- (c) sixteen points deducted (-16 points) from next season’s Points Total.

Additional Notes

2025 PPS Windows

- The initial window for submission of the PPS is prior to Round 1, with all clubs requiring to submit their PPS by close of business, 5.00pm Monday 13 January 2025.
- Dates for all PPS Windows are outlined below.
- Please note, the below dates are for PPS amendments only and do not necessarily reflect registration windows.

2025 Windows	Opening Date	Closing Date
Window 1	Monday 2 December 2024	5:00pm 13 January 2025
Window 2	TBC	TBC
Window 3	TBC	TBC

Women’s Premier and State League Cup

- The PPS does not apply to the Cup competition.

Exceptional Circumstances

- A club may apply to Football SA to make a change to the PPS team roster outside of the designated amendment windows due to exceptional circumstances. These may include (but not limited to);
 - Long Term Player Injury – this would mean a player who is unable to play for a period of four (4) weeks or longer, supporting documentation would need to be provided upon the club making an application from a qualified General Practitioner or Specialist. Physiotherapists and Massage Therapists notes cannot be used as supporting documentation.

- Player Movement – Where the player leaves outside of the control of the club, for example a player is relocated due to work purposes.
- Goalkeepers – as this is a specialised position as determined by the National Registration Regulations

The decision to grant an exemption for a club to change the PPS team roster outside of the windows is at the sole and absolute discretion of Football SA.

APPENDIX D - FIRST TEAM PLAYER ROSTER 2025

The First Team Player Roster was introduced in 2019 following consultation with Clubs in 2018.



The purpose of the First Team Player Roster is to provide Clubs participating in State League 1 and State League 2 with a similar framework to that of the Player Points System (PPS) utilised in the National Premier League. Further objectives of the First Team Player Roster are to provide a greater opportunity for youth Players and to increase the stability of State League 1 and State League 2 Teams by decreasing the movement of Players.

Unlike the PPS, there is no points system weighted on Players and therefore no points cap attributed to the First Team Player Roster.

Promoting Players from Reserves or Under 18's onto the First Team Player Roster is permitted in limited circumstances as outlined further in the Explanatory Notes and Guidelines under First Team Player Roster requirements.

The general definitions are provided for ease of reference.

The following discussion points and examples are intended to provide Clubs with further clarity with respect to the First Team Player Roster.

1. General Definitions

First Team

First Team means the Club's senior team participating in the State League 1 & 2.

First Team Player Roster

First Team Player Roster means the roster of Players for a Club's First Team maintained in accordance with the First Team Player Roster System and any other competition regulations provided by Football SA.

Only players listed on the First Team Player Roster, or those that are age eligible, can participate in First Team matches.

State League 1 (SL1)

SL1 means the senior men's second tier club competition in South Australia.

State League 2 (SL2)

SL2 means the senior men's third tier club competition in South Australia.

2. Explanatory Notes

SL1 & SL2 First Team Player Roster Requirements

At all times during the season, the Club must include a minimum of 20 Players on its First Team Player Roster and may include a maximum of 23 Players on its First Team Player Roster.

Information required on the playing roster includes FFA Number, First and Last Name, Date of Birth, Age, Australian/visa player and professional or amateur player and must be completed on the provided First Team Player Roster template.

Use of Players aged 20 or younger (Movement of Players)

- Any Player who during 2025 turns 21 years of age (2004 born) must be included on his Club's First Team Player Roster.
- Any Player that is born in 2005 or is younger, can play for the First Team without the requirement to be listed on the Club's First Team Player Roster.

Australian Player

An Australian Player is any Player who is:

- b) citizen of Australia;
- c) a Permanent Resident of Australia (where Permanent Resident means a person residing in Australia on a "permanent" visa class issued by the Australian Government, evidenced by either the person's Visa Grant Notice or as a listed entitlement on the person's online Visa Entitlement Verification);
- d) a person who has been granted indefinite stay in Australia on their visa; or
- e) the holder of a refugee visa, humanitarian visa or protection visa issued by the Australian government. For further details see: <https://www.homeaffairs.gov.au/>.

Visa Player

- SL1 & SL2 Clubs are encouraged to refer to the following website for further clarification regarding visas: <https://www.homeaffairs.gov.au/>.
- A visa player is any player that has not been granted an indefinite stay within Australia on their visa.
- A club may have a maximum of two (2) visa players listed on a First Team Player Roster.

AFC/OFC Visa Player

- An AFC/OFC Visa Player is any player who is not an Australian player and who holds citizenship from an AFC or OFC Member Association.
- A club may have a maximum of one (1) AFC/OFC Visa players listed on a First Team Roster.

For Clarity,

- A club may list a maximum of three (3) visa players on a First Team Roster and any senior match sheet as long as one of the three players is considered an AFC/OFC Visa Player.
- If there are no AFC/OFC Visa Players, the club may only list a maximum of two (2) visa players on a First Team Roster and any senior match sheet.

Windows

First Team Player Roster Windows during 2025:

2025 Window(s)	Opening Date	Closing Date
January - February	Thursday 16 January, 2025	Friday 7 February, 2025
April	TBC	TBC
June	TBC	TBC

3. Exceptional Circumstances

A club may apply to Football SA to make a change to the First Team Player Roster outside of the designated windows, in exceptional circumstances. These may include (but not limited to);

- Long Term Player Injury – this would mean a player who is unable to play for a period of four (4) weeks or longer, supporting documentation is required to be provided upon the club making an application from a qualified General Practitioner or Specialist.
- Player Movement – Where the player leaves outside of the control of the club, for example a player is relocated interstate due to work purposes.
- Goalkeepers – as this is a specialised position as determined by the National Registration Regulations.

The decision to grant an exemption for a club to change the First Team Player Roster outside of the windows is at the sole and absolute discretion of Football SA.

APPENDIX E – MEN’S AND WOMEN’S FINAL SERIES COMPETITION

The finishing position of Teams at the conclusion of the Home and Away Season will determine the Team’s position in the Final Series.

National Premier League & State League 1

Week 1 – Elimination Finals					
Match	Home Team		Away Team		Type of Final
Match A	3 rd Place	vs.	6 th Place		Elimination Final
Match B	4 th Place	vs.	5 th Place		Elimination Final
<i>1st and 2nd placed team will have a bye</i>					

Week 2 – Semi Final Leg 1					
Match	Home Team		Away Team		Type of Final
Match C	1 st Place	vs.	Lowest Ranked EF Winner		Semi-Final #1 Leg 1
Match D	2 nd Place	vs.	Highest Ranked EF Winner		Semi-Final #2 Leg 1

Week 3 – Semi-Final Leg 2					
Match	Home Team		Away Team		Type of Final
Match E	1 st Place	vs.	Lowest Ranked EF Winner		Semi-Final #1 Leg 2
Match F	2 nd Place	vs.	Highest Ranked EF Winner		Semi-Final #2 Leg 2

Week 4 – Grand Final					
Match	Home Team		Away Team		Type of Final
Match G	Highest Ranked SF Winner	vs.	Lowest Ranked SF Winner		Grand Final

- Teams that finish 1st and 2nd at the conclusion of the Home and Away Season will have a bye in the first week of Finals and progress to the Semi Finals.
- The team who finishes in first (1st) and second (2nd) position at the conclusion of the Home and Away Season can nominate their preference to play the first (1st) leg of their Semi Finals either at home or away, subject to venue availability and Football SA approval.
- Football SA may change the Finals format at its own discretion.

State League 2 (Seniors)

See below for U18s and Reserves format

Week 1 – Promotion Play-Off / Elimination Final 1 st Leg					
Match	Home Team		Away Team		Type of Final
Match A	1st North	vs.	1st South		Grand Final / Promotion Play-Off
Match B	4 th South	vs.	2 nd North		Elimination Final (1 st Leg)
Match C	4 th North	vs.	2 nd South		Elimination Final (1 st Leg)
Match D	3 rd North	vs.	3 rd South		Elimination Final (1 st Leg)

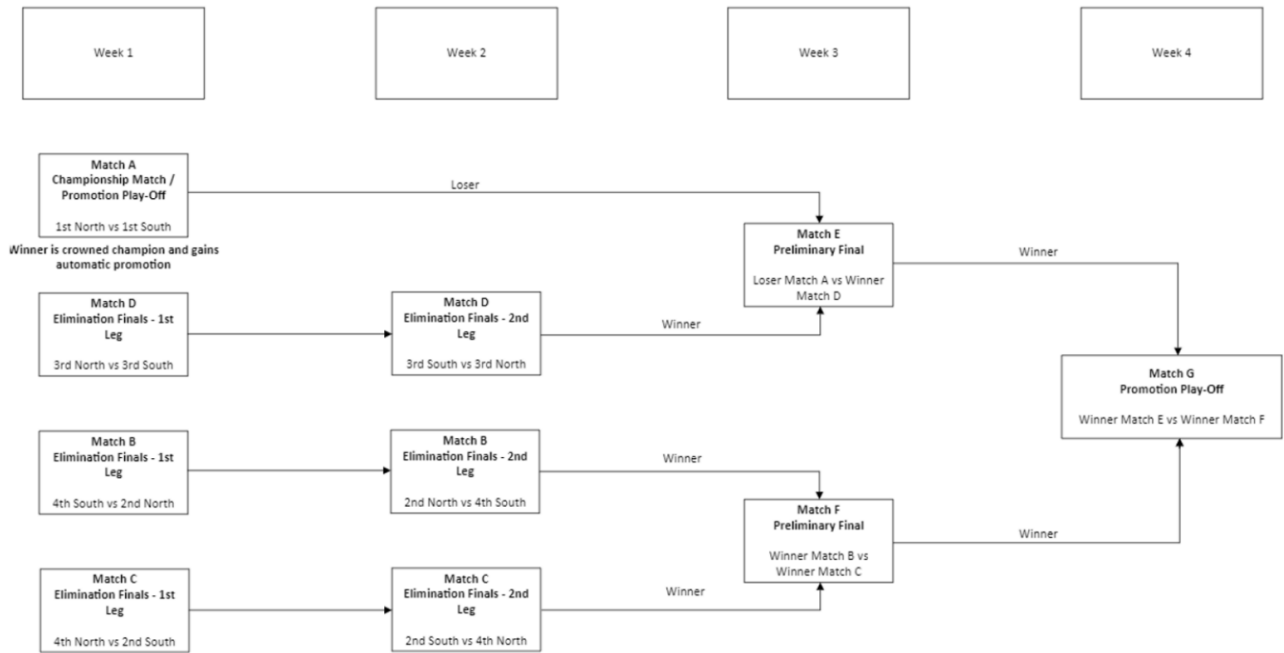
Week 2 - Elimination Final 2 nd Leg					
Match	Home Team		Away Team		Type of Final
Match B	4 th North	vs.	2 nd South		Elimination Final (2 nd Leg)
Match C	4 th South	vs.	2 nd North		Elimination Final (2 nd Leg)
Match D	3 rd South	vs.	3 rd North		Elimination Final (2 nd Leg)
<i>Loser from 'Match A' receives a 'Bye' to re-enter the Finals Series from Week 3</i>					

Week 3 – Preliminary Finals					
Match	Home Team		Away Team		Type of Final
Match E	Loser 'Match A'	vs.	Winner 'Match D'		Preliminary Final
Match F	Winner 'Match B'	vs.	Winner 'Match C'		Preliminary Final

Week 4 – Promotion Play-Off					
Match	Home Team		Away Team		Type of Final
Match G	Loser 'Match E'	vs.	Winner 'Match F'		Grand Final

- Teams that finish 1st and 2nd at the conclusion of the Home and Away Season will compete in a 'Promotion Play-Off / Championship Match' during the first week of Finals. The winner will be crowned champions and will be removed from the Finals series.
- The 'loser' of this match will receive a second chance and re-enter the Finals series from Week 3.
- Football SA may change the Finals format at its own discretion.

State League 2 Finals Series – Flow Chart



State League 2 (Under 18s & Reserves)

Week 1 – Elimination Finals					
Match	Home Team		Away Team		Type of Final
Match A	2 nd North	vs.	3 rd South		Elimination Final
Match B	2 nd South	vs.	3 rd North		Elimination Final
<i>1st of North and South will have a bye.</i>					

Week 2 – Semi Final Leg 1					
Match	Home Team		Away Team		Type of Final
Match C	Winner Match A	vs.	1 st South		Semi-Final #1 Leg 1
Match D	Winner Match B	vs.	1 st North		Semi-Final #2 Leg 1

Week 3 – Semi-Final Leg 2					
Match	Home Team		Away Team		Type of Final
Match E	1 st South	vs	Winner Match A		Semi-Final #1 Leg 2
Match F	1 st North	vs	Winner Match B		Semi-Final #2 Leg 2

Week 4 – Grand Final					
Match	Home Team		Away Team		Type of Final
Match G	Highest Ranked SF Winner	vs.	Lowest Ranked SF Winner		Grand Final

- Teams that finish 1st of *North* and 1st of *South* at the conclusion of the Home and Away Season will have a bye in the first week of Finals and progress to the Semi Finals.
- When *feasible* U18's and Reserves Finals Series will be held at grounds hosting 'Senior' Finals. Alternatively, games will be hosted by the home *Reserves* side.
- Football SA will be responsible for scheduling the host venue for Under 18's and Reserves Finals Series matches.
- Football SA may change the Finals format at its own discretion.

2. Women's National Premier League Seniors and Reserve Grades

Week 1				
Match	Home Team		Away Team	Type of Final
Match A	2nd Place	Vs.	3rd Place	Qualifying Final
Match B	4th Place	Vs.	5th Place	Elimination Final
1st Place - BYE				

Week 2				
Match	Home Team		Away Team	Type of Final
Match C	1st Place	Vs.	Winner Match A	Major Semi Final
Match D	Loser Match A	Vs.	Winner Match B	Minor Semi Final

Week 3				
Match	Home Team		Away Team	Type of Final
Match E	Loser Match C	Vs.	Winner Match D	Preliminary Final
Winner of Major Semi-Final - BYE				

Week 4				
Match	Home Team		Away Team	Type of Final
Match F	Winner Match C	Vs.	Winner Match E	Grand Final

Women's State League

A promotional play-off will be held in the Women's State League. This play-off will be played between the 9th placed Women's National Premier League Team and the 2nd placed Women's State League Team.

Week 1				
Match	Home Team		Away Team	Type of Final
Match A	2nd Placed WSL Team	Vs.	9th Placed WNPL Team	Promotional Play off

APPENDIX F – 2025 PRIZE MONEY

RAA NATIONAL PREMIER LEAGUE	PRIZE MONEY
Team that wins the RAA NPL Grand Final	\$20,000
Team that finishes first at the end of the Home and Away Season	\$18,000
Team that comes runners-up in the RAA NPL Grand Final	\$11,000
Team that comes third in the Final series	\$5,000
Team that comes fourth in the Final series	\$3,000
Team that comes fifth in the Final series	\$2,000
Team that comes sixth in the Final series	\$2,000
<i>*Contra Advertising - Nova Entertainment - Winner of Grand Final</i>	\$7,500
TOTAL	\$68,500
WOMENS NATIONAL PREMIER LEAGUE	
WOMENS NATIONAL PREMIER LEAGUE	PRIZE MONEY
Team that wins the WNPL Grand Final	\$12,000
Team that finishes first at the end of the Home and Away Season	\$8,000
Team that comes runners-up in the Grand Final	\$4,000
Team that comes third in the Final series	\$1,000
<i>*Contra Advertising - Nova Entertainment - Winner of Grand Final</i>	\$7,500
TOTAL	\$32,500.00
STATE LEAGUE ONE	
STATE LEAGUE ONE	PRIZE MONEY
Team that wins the State League 1 Grand Final	\$10,000
Team that finishes first at the end of the Home and Away Season	\$8,000
Team that comes runners-up in the State League 1 Grand Final	\$4,000
Team that comes third in the Final series	\$2,000
Team that comes fourth in the Final series	\$1,000
TOTAL	\$25,000
STATE LEAGUE TWO (NORTH/SOUTH)	
STATE LEAGUE TWO (NORTH/SOUTH)	PRIZE MONEY
Team that finishes first at the end of the Home and Away Season - North	\$4,000
Team that finishes first at the end of the Home and Away Season - South	\$4,000
First Promotion Play-Off Winner	\$4,000
Second Promotion Play-off Winner	\$4,000
Team that comes Runner up in the Second Promotion Play-Off	\$2,000
Team that finishes second at the end of the Home and Away Season - North	\$1,000
Team that finishes second at the end of the Home and Away Season - South	\$1,000
TOTAL	\$20,000
FEDERATION CUP	
FEDERATION CUP	PRIZE MONEY
Football SA Federation Cup Winner	\$7,000
Football SA Federation Cup Runners Up	\$3,500
Football SA Federation Cup Semi Finalist	\$1,000

Football SA Federation Cup Semi Finalist	\$1,000
TOTAL	\$12,500
WOMENS STATE LEAGUE	
	PRIZE MONEY
Team that finishes first at the end of the Home and Away Season	\$1,500
Team that finishes second at the end of the Home and Away Season	\$500
TOTAL	\$2,000
WOMENS CUP	
	PRIZE MONEY
Womens NPL/WSL Cup Winner	\$3,000
Womens NPL/WSL Cup Runner-Up	\$1,500
TOTAL	\$4,500
GRAND TOTAL	\$165,000

APPENDIX G – YCC BONUS/DEDUCTION POINTS

The below table stipulates the bonus points Clubs can receive to their total Youth Club Championship Table. Bonus points will be attributed at different times throughout the Season at the sole and absolute discretion of Football SA. Bonus points will be reviewed each year and may be adjusted to encourage Clubs to focus on other categories.

Youth Club Championship – Bonus Points			
Category	Reason	When	Points
Under 13, 14, 15 and 16 Head Coaches <ul style="list-style-type: none"> All Coaches are currently qualified, undertaking or enrolled with a C Diploma 	Encourage Clubs to appoint Coaches with the minimum criteria ensuring Coaches are up-to-date with best practices.	Football SA will audit all YCC Coaches in June. From 2026, the audit will be conducted in April and bonus points will only be attributed if all Coaches have their licence.	+10 Club Championship Points
Club Youth Technical Director <ul style="list-style-type: none"> Club Youth Technical Directors currently qualified, undertaking or enrolled with a B Diploma 	Encourage Clubs to appoint a Youth Technical Director that has a senior licence ensuring they are able to monitor and Coach the Clubs youth Coaches.	Football SA will audit all YCC Youth Technical Directors in June. From 2026, the audit will be conducted in April and bonus points will only be attributed if the Youth Technical Director has their licence.	+10 Club Championship Points
YCC Head Coaches and Youth Technical Director attending a minimum number of Coaching workshops/education sessions/seminars throughout the Season. <ul style="list-style-type: none"> 1 x pre-season 1 x mid-season 1 x post-season 	Ensuring Coaches are communicating with the Football SA Technical Director in regard to Coaching practices throughout the Season.	Football SA will attribute points following the mid-season sessions for the 2025 Season. From the 2026 Season onwards, the post season session will attribute to the following Season.	+ 10 Club Championship Points <i>Points will only be attributed if Coaches from each Team and the Technical Director attend the sessions.</i>
Utilisation of a Player tracking system, i.e. Lumin	To encourage Clubs to utilise a system which will enhance the tracking of Players welfare and training loads involved in the YCC Competition	Clubs will be required to submit to Football SA prior to the commencement of the Season verifiable evidence that it has subscribed to a Player tracking system,	+6 Club Championship Points

	resulting in greater understanding of Players.	approved by the Football SA Technical Director, in their sole and absolute discretion with the ability to monitor no less than 64 Players.	
Utilisation of a Player Coaching system, i.e. Hudl	To encourage Clubs to utilise a system which will enhance the Coaching experience when used in conjunction with a camera system i.e. veo.	Clubs will be required to submit to Football SA prior to the commencement of the Season verifiable evidence that it has subscribed to a Player tracking system, approved by the Football SA Technical Director, in their sole and absolute discretion with the ability to monitor no less than 64 Players.	+6 Club Championship Points
Utilisation of a camera system	To encourage Clubs to record for Coaching purposes, training sessions and Matches to improve the Coaching environment for Players.	Clubs will be audited throughout the Season for utilisation of camera systems.	+6 Club Championship Points

Youth Club Championship (All Tiers) – Deduction Points			
Category	Reason	When	Points
Disciplinary Matters	Encourage positive behaviour amongst Players, officials and spectators.	When a Club participating in the YCC receives 10 red cards, 15 red cards and 20 red cards in a Season.	-3 Club Championship Points for each Accumulation.
<ul style="list-style-type: none"> Club Accumulation of red cards Match Official Abuse 		When a Player or official receives a red card for Match official abuse, or if a Club spectator is found guilty and sanctioned from attending any Matches due to Match official abuse.	<p>If sanction received is three (3) or less Matches/weeks, -1 Competition point</p> <p>If sanction received is four (4) or more Matches/weeks, -3 Competition points</p>

<ul style="list-style-type: none"> Threatening or intimidating a Match official 		<p>When a Player/team official/spectator is found guilty of threatening or intimidating a Match official.</p>	<p>-12 Club Championship Points</p>
<ul style="list-style-type: none"> Violent Conduct 		<p>When a Player or official is found guilty of serious violent conduct which results in a sanction of four (4) or more Matches/weeks.</p>	<p>-3 Club Championship Points</p>
<ul style="list-style-type: none"> Breaches of Codes of Conduct 		<p>When a Player, official or spectator is found guilty of any code of conduct which results in a sanction of three (3) or more weeks/Matches or six (6) or more weeks/Matches.</p>	<p>If sanction received is between (3) to five (5) Matches, -3 Competition points.</p> <p>If sanction received is six (6) or above weeks/Matches, -6 Competition points</p>

APPENDIX H – FOOTBALL SA CLUB REFEREE FEES 2025

Competition	Grade	Referee	Assistant
NPL Men	Senior	\$246.00	\$123.00
	Reserve	\$144.00	\$72.00
	Under 18	\$128.00	\$64.00
NPL Finals Series	Senior	\$306.00	\$153.00
	Reserve	\$175.00	\$87.50
	Under 18	\$158.00	\$79.00
WNPL	Senior	\$150.00	\$75.00
	Reserves	\$114.00	\$57.00
WNPL Finals Series	Senior	\$205.00	\$102.50
	Reserve	\$137.00	\$68.50
State League 1 Men	Senior	\$200.00	\$100.00
	Reserve	\$133.00	\$66.50
	Under 18	\$115.00	\$57.50
State League 1 Men Finals Series	Senior	\$237.00	\$118.50
	Reserve	\$160.00	\$80.00
	Under 18	\$138.00	\$69.00
Women's State League	Seniors	\$115.00	\$57.50
	Reserves	\$90.00	\$45.00
State League 2 Men	Senior	\$185.00	\$92.50
	Reserve	\$124.00	\$62.00
	Under 18	\$105.00	\$52.50
State League 2 Finals Series	Senior	\$222.00	\$111.00
	Reserve	\$137.00	\$68.50
	Under 18s	\$115.00	\$57.50
Hahn Australia Cup/Federation Cup Round 1-4	Senior	\$200.00	\$100.00
	Reserve	\$133.00	\$66.50
	Under 18	\$115.00	\$57.50
Competition	Grade	Referee	Assistant
Masters League	All Divisions	\$95.00	\$45.00
Community Women	All Divisions	\$90.00	\$45.00

Youths (all Leagues)	Under 12	\$70.00	\$45.00
	Under 13	\$70.00	\$45.00
	Under 14	\$75.00	\$37.50
	Under 15	\$75.00	\$37.50
	Under 16	\$80.00	\$40.00
	Under 17	\$80.00	\$40.00
	Trial Matches	75% of Match fee	
Trial Matches	Senior Men Trials	\$120.00	\$60.00
	Reserve Men Trials	\$85.00	\$42.50
	Under 18 Men Trials	\$70.00	\$35.00
	Senior Women Trials	\$104.00	\$52.00
	Reserve Women Trials	\$84.00	\$42.00

Regional Travel Allowances			
The regional travel motor vehicle allowance will be paid for the 2025 Season at the current ATO rate of \$0.85 cents per kilometre (calculated from Adelaide CBD)			
Regional Travel Allowance Examples			
Location	Travel Allowance	Distance	Car Allowance
Mt Gambier	\$105.00	435 km	\$369.75
Whyalla	\$105.00	385 km	\$327.25
Port Pirie	\$52.50	231 km	\$196.35

* Car Allowances where applicable will be paid to the driver using their private vehicle

NOTES

1. Fourth Official fees same as Assistant Referee.
2. Matches Postponed on Match day, Referees will receive payment in accordance with Football SA Rules and Regulations.
3. Football SA will be responsible for the payment of all Referees appointed to Football SA Competitions.
4. Car allowances will only be paid to the driver of the car.
5. Travel allowances will be paid by Football SA via EFT.
6. Allowances will be paid in addition to the corresponding Match Fee.

APPENDIX I – EXTREME WEATHER POLICY

Please refer to the following link, as updated by Football SA from time to time:

<https://www.footballsouth.com.au/sites/ffsa/files/2021-05/Extreme%20Weather%20Policy%20Final.pdf>.